

# Full Time Church ~ Part Time Staff



**Karen Bellavance-Grace, New England Region UUA**



## Opening words

We light this chalice to affirm that new light is ever waiting to break through to enlighten our ways;

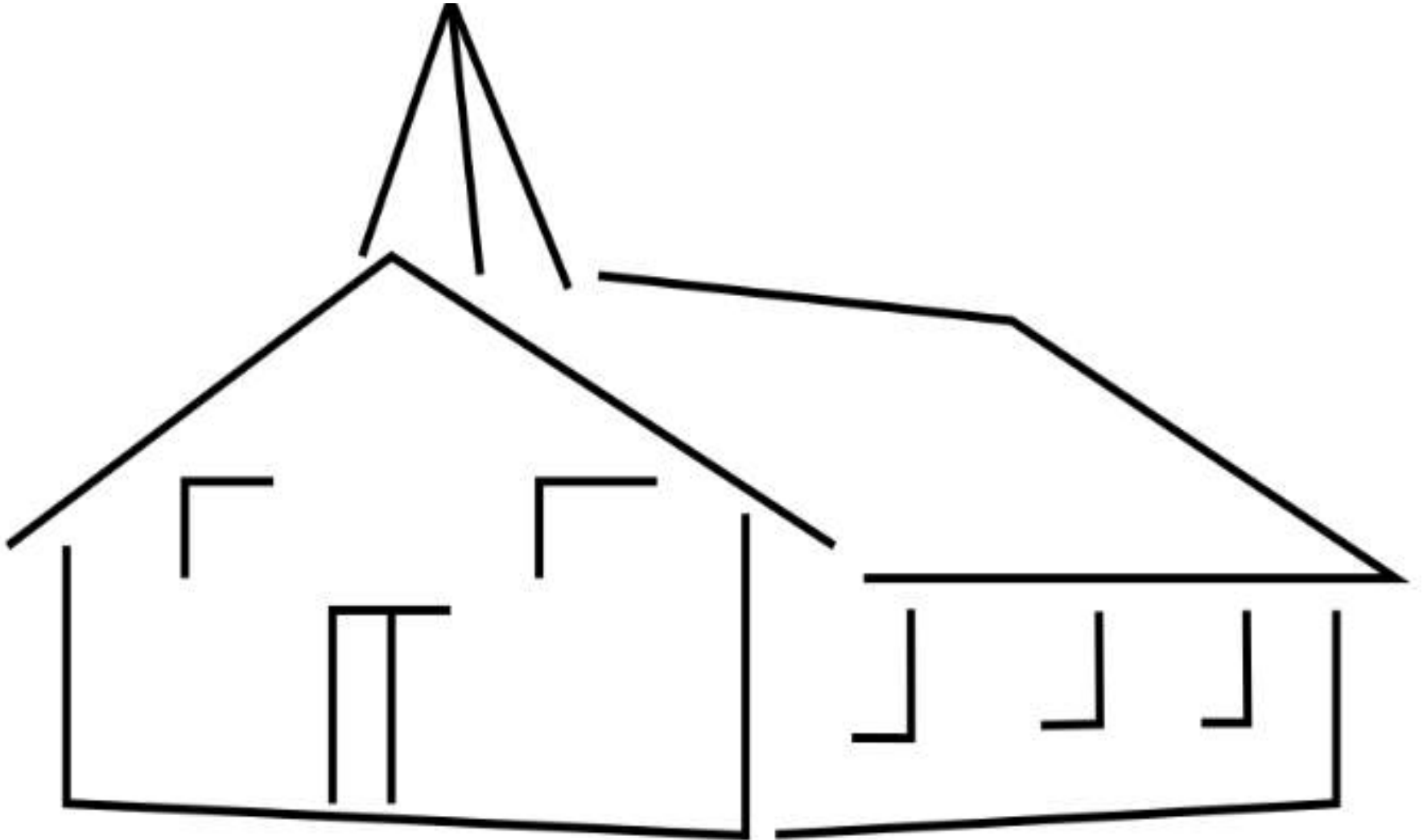
that new truth is ever waiting to break through to illumine our minds;

and that new love is ever waiting to break through to warm our hearts.

# GOALS

- Think about the bigger context in which you and your church work
- Spend time with others from your church thinking 'big picture'
- Know your congregation is wholly deserving of Love and Grace
- Take home at least one sparky idea to share

# What does Full Time Church look like?





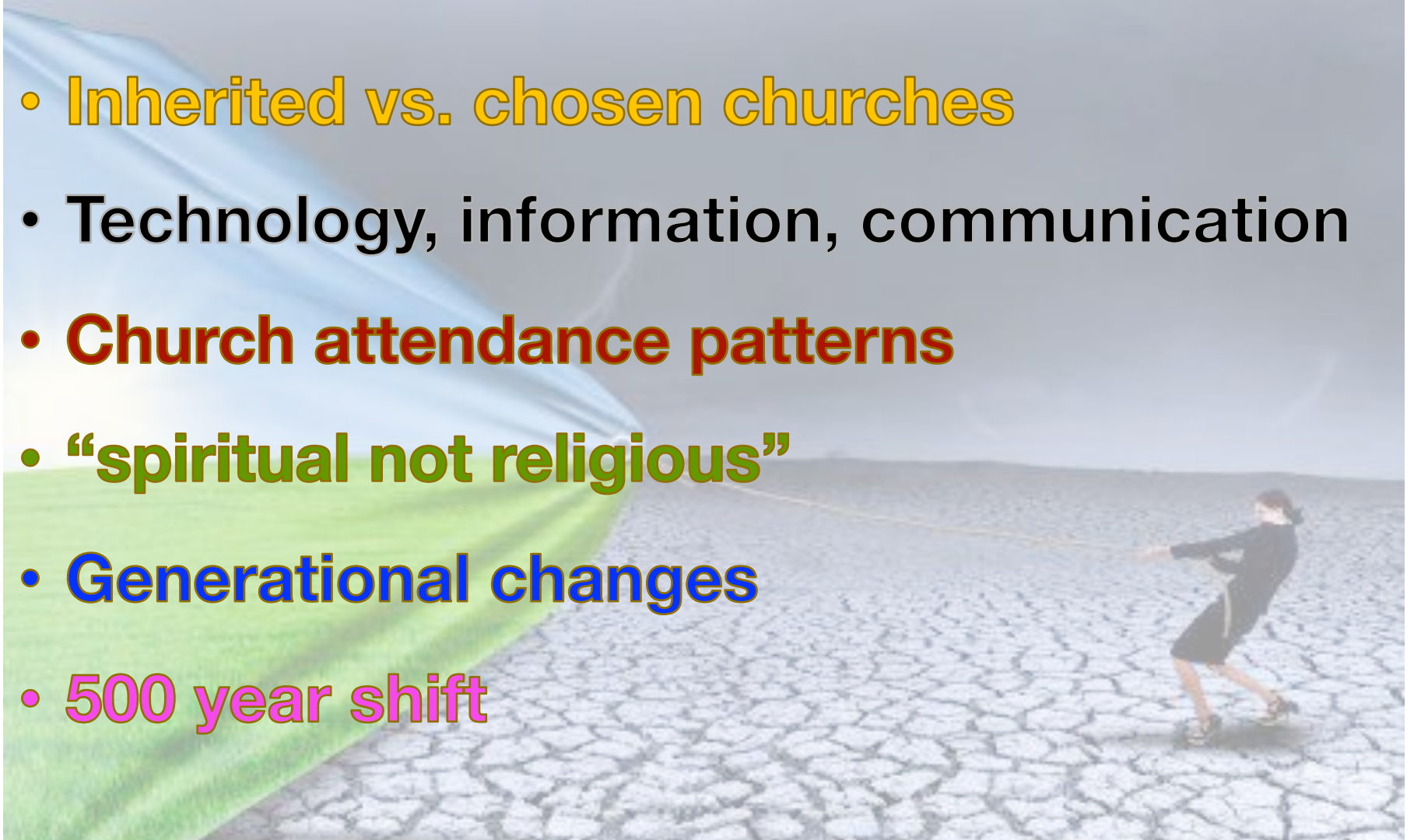


A word cloud featuring various church and community-related terms. The words are arranged in a dynamic, overlapping fashion and are color-coded: red for 'justice work', green for 'volunteering', yellow for 'financial', pink for 'building', blue for 'pastoral care', and purple for 'coffee hour'. Other words in various colors include 'sunday school program', 'small group', 'availability', 'outreach', 'youth', 'prayer', 'space', and 'volunteers'. A large, stylized orange number '2' is positioned in the upper right. At the top, a horizontal bar is divided into three segments of red, orange, and green. The words have a slight drop shadow, giving them a 3D appearance.

sunday  
school  
program  
justice work  
volunteering  
financial  
small group  
availability  
outreach  
youth  
prayer  
space  
volunteers  
coffee hour  
pastoral care

# Changing Landscape

- Inherited vs. chosen churches
- Technology, information, communication
- Church attendance patterns
- “spiritual not religious”
- Generational changes
- 500 year shift



# Release



**What does MY church look like?**





# Meet Eddie



- 13 yo teenage boy
- Boundless energy – but can sleep for lonnnng times
- Great enthusiasm
- Not so great organization
- Easily bored with long projects
- Voice is changing
- Wide eyed, open hearted



**END SESSION ONE**

# Full Time Church ~ Part Time Staff, part two



**Karen Bellavance-Grace, New England Region UUA**

# A Step Along The Way

*Bishop Ken Untener*

**This is what we are about.**

**We plant the seeds that one day will grow...**

**We lay foundations that will need further development...**

**We cannot do everything, and there is a sense of liberation in realizing that.**

**This enables us to do something, and to do it very well.**

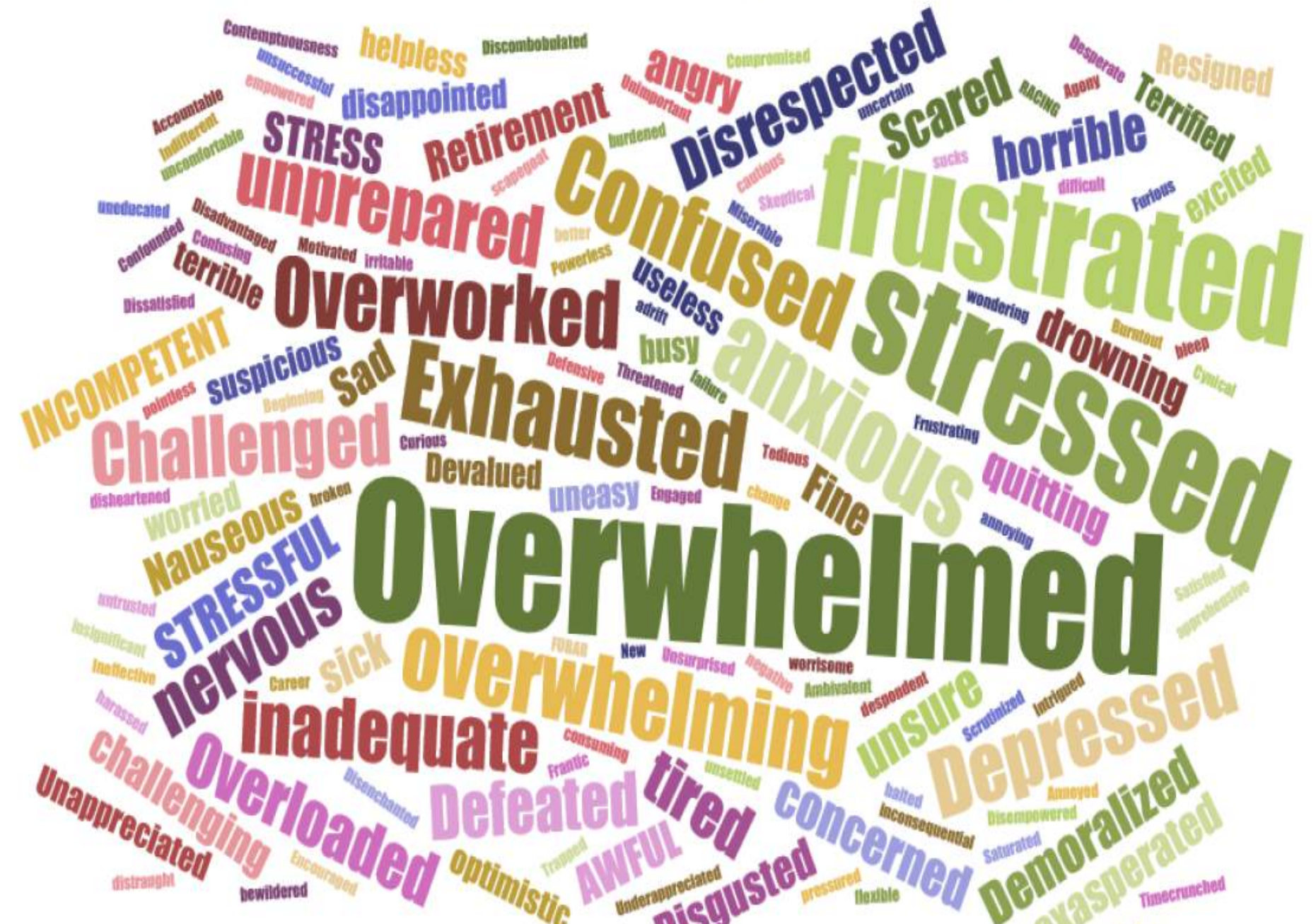
**It may be incomplete, but it is a beginning, a step along the way...**

**We may never see the end results, but that is the difference between the master builder and the worker.**

**We are workers, not master builders; ministers, not messiahs.**

**We are prophets of a future not our own.**





# Redouble

**WHATEVER  
YOU DO  
DO IT WELL**

*- WALT DISNEY*

Whatever you do, do it well. Do it so well that when people see you do it they will want to *come back and see you do it again* and they will want to bring others and show them how well you do what you do.”

*Walt Disney*



# Tools





# Covenant



**Covenant  
Works**

- What do I need from you?
- What do you need from me?
- How will we communicate?
- How will we evaluate?
- Will you trust me to prioritize my work?
- Will you communicate clearly your limitations?

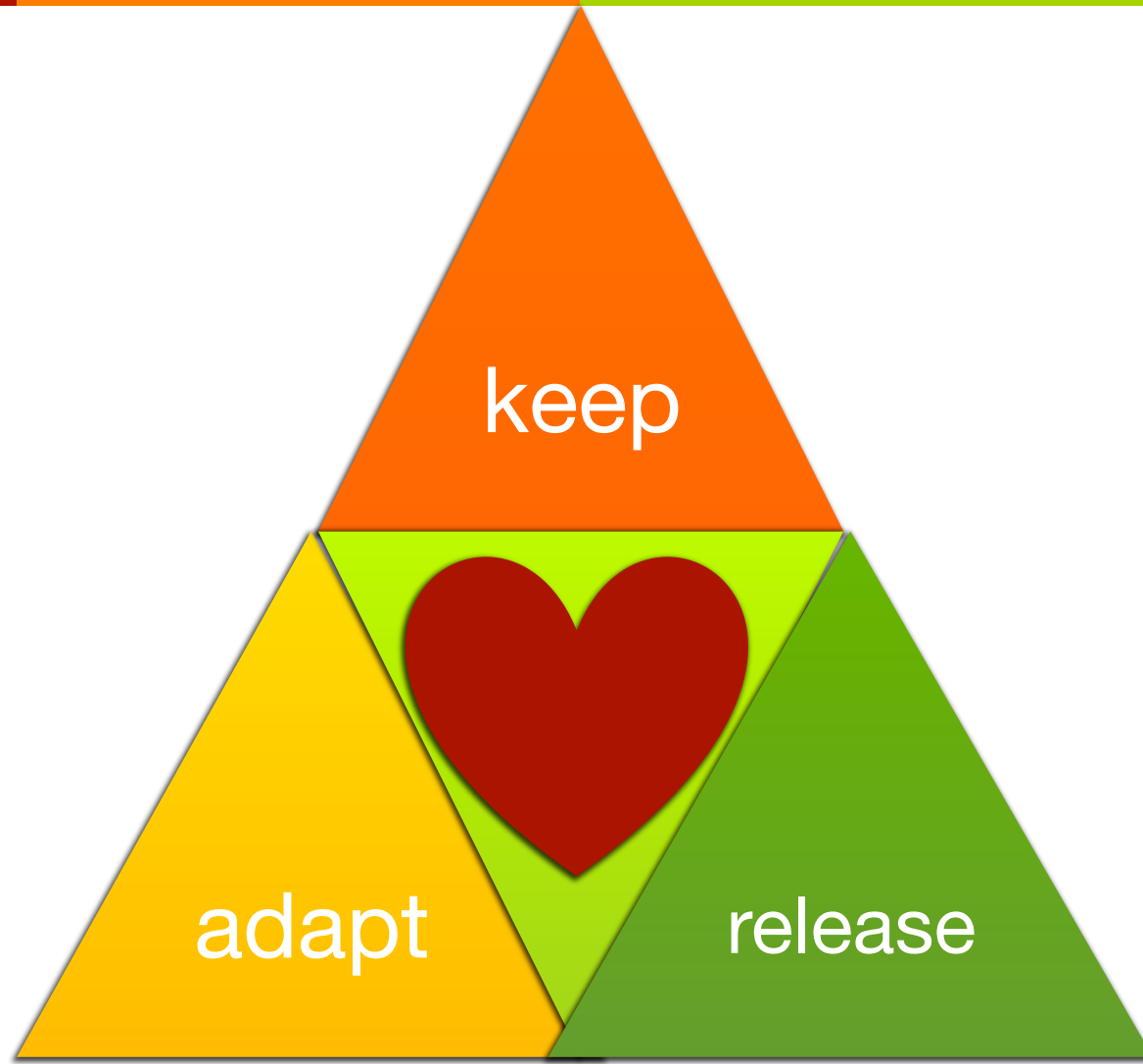
# Realign

## Purpose:

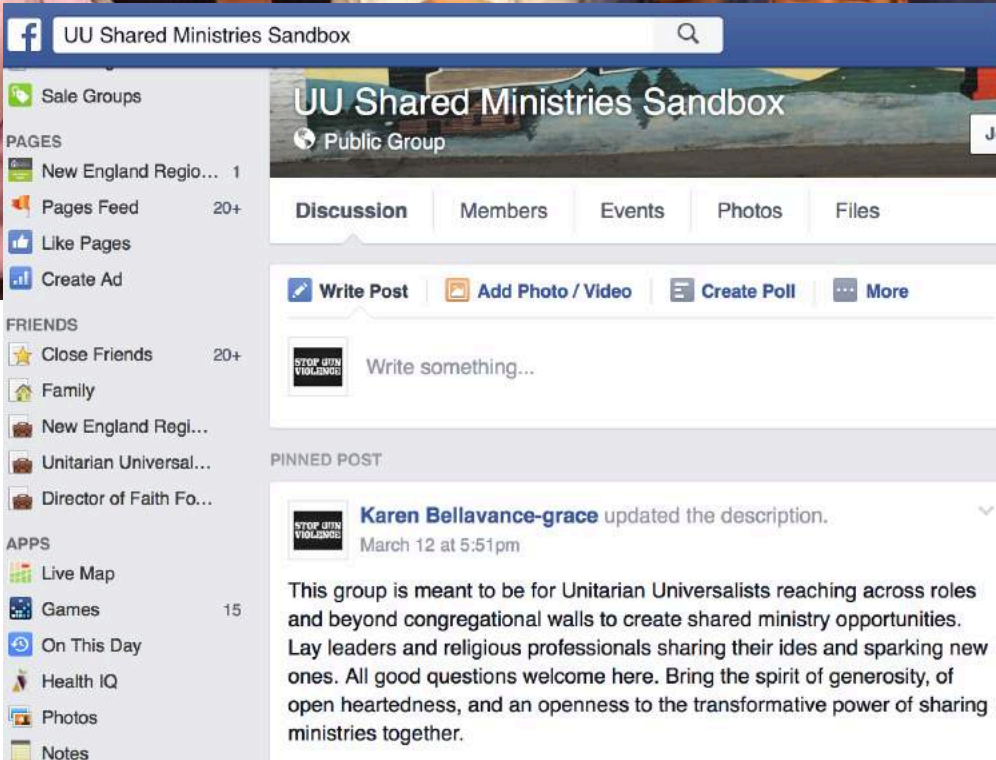
**To bring the Love and Grace of our faith to your congregation, your community, and our world.**



# Realign



# Community





# Stories



# Story

JUN  
12

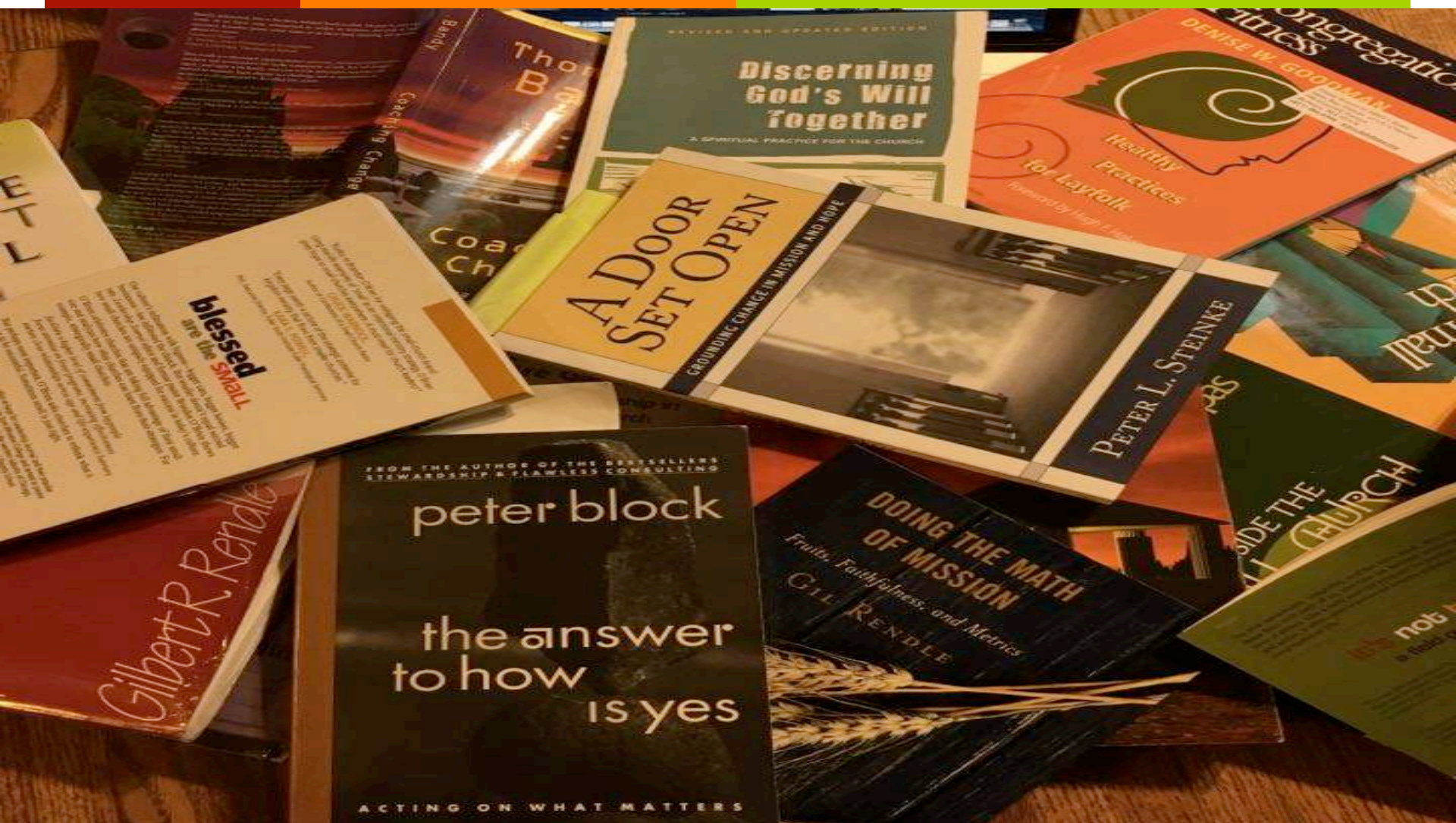
Second Sunday School - Beginnings

# Story





# Books!





# Questions / comments





Blessings

Hope

Joy

Love

Smile


Friend

Wisdom

Bles

Na

Na



Take courage friends.  
The way is often hard, the path is never clear,  
and the stakes are very high.  
Take courage.  
For deep down, there is another truth:  
you are not alone.

Rev. Wayne Arnason