

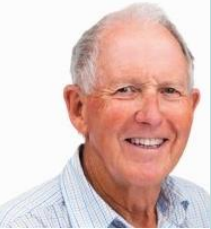


**ChooseHealth**  
D E L A W A R E

# Delaware's State Health Care Innovation Plan

October 8, 2014

# Karen's story



# The case for change



Health care is confusing for **Patients,** and premiums are rising



**Providers** lack time and resources to proactively coordinate care

## Community organizations

face tightening budgets and difficulty coordinating with care providers to help those most in need



## The **State of Delaware**

faces health care costs that consume 22.4% of the state budget



# Our shared dilemma: The facts

4.3% of adults considered suicide in 2011

1 in 5 Delawareans are smokers

Health care costs consume 22.4% of state budget

Health care costs growing at 6% per year

Per capita costs 25% higher than average

Diabetes incidence rate of 11.1%

31.1% of Delawareans are obese



# A vision for each patient

- I have a **personal relationship** with my primary care provider
- My primary care provider **reaches out to me** when I need care
- I have **easier access** to appointments and fewer repeat visits
- My different providers understand my needs and **work together**
- I have **support in my community** to live a healthy lifestyle and make healthy choices



# Core elements of Delaware's strategy



- **Change the way that we pay for health care** to link provider payments to better quality and better management of costs



- **Support primary care providers** to work with care teams to help high-risk patients better access and engage with the health system



- **Build healthier communities** through “**Healthy Neighborhoods**” – local communities that come together to form a multi-stakeholder coalition to tackle important health needs

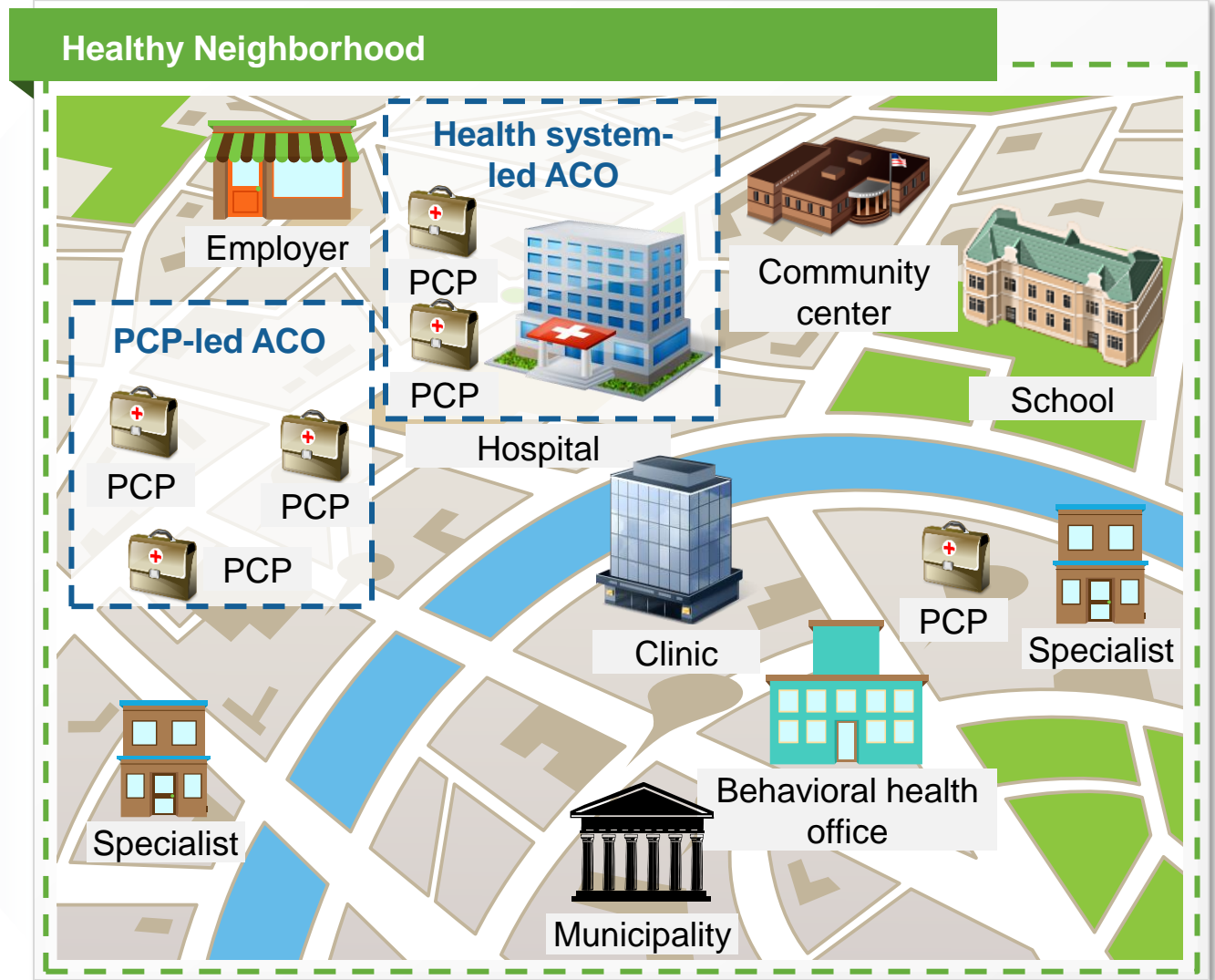


- **Strengthen the health care workforce** through training and capability building



- **Build IT tools and resources** to provide the right information to right people at right time

# Healthy Neighborhoods will integrate public health with care delivery system



# Multi-stakeholder approach

- **Public-private approach with statewide multi-stakeholder participation**
  - More than 100 people and 40 organizations in at least one session
  - Delaware Center for Health Innovation to carry the work forward
  - Participation from every hospital, every FQHC, every major payer, primary care providers, specialists, and community health organizations
  
- **Open and transparent process**
  - More than 30 public meetings held since May 2013
  - Regular updates at Health Care Commission meetings
  - Email updates to 500+ recipients





# Factors for success

- **Everyone is at the table**
- **Building on existing efforts**
- **Comprehensive (not just a Band-Aid)**
- **Data-driven**



# How to stay involved

For additional information, please visit the **Delaware Health Care Commission** website or contact **Robin Lawrence** at the HCC

<http://dhss.delaware.gov/dhcc/Robin.Lawrence@state.de.us>

