



Realty Executives On The Bay Inc. Brokerage



## 3665 EAGLE LAKE ROAD - PARRY SOUND DISTRICT

CAMP, OUTDOOR ED, RETREAT CENTRE

**\$1,450,000**

(AMAZING VALUE!)

Information is deemed to be correct but not guaranteed.



### Grace Kidd & Rob Heming

Your Team for Real Estate Excellence

Phone: 705-361-9283

Toll-Free: 1-877-361-9283

Cell: 705-321-4924

Fax: 705-361-3659



[facebook.com/robheming](https://facebook.com/robheming)



[linkedin.com/in/robheming](https://linkedin.com/in/robheming)

Email: [waterfront1@rogers.com](mailto:waterfront1@rogers.com)

Website: [www.waterfrontrealestateservices.com](http://www.waterfrontrealestateservices.com)

## 3665 EAGLE LAKE ROAD - PARRY SOUND DISTRICT



**Price:** \$1,450,000 *AMAZING VALUE!*

**Type:** Residential

**Style:** Commercial

**Garage:** Single

**Basement:** Yes

**Size:** 21,500 sq. ft.

**Lot Type:** Rectangular

**Lot Size:** 267.92 acres

**Taxes:** \$3,806 (2014)

### Description

Known currently as Camp Peak and formerly Deer Lake Christian Centre, this 150-200 bed camp & outdoor education facility is perfect for those seeking a year round children's camp, outdoor education, retreat centre or conference centre. Situated on 27.5 acres & 853' of beautiful sandy beach waterfront on Deer Lake, the facility is accessible from a yr round municipal road just 15 minutes from Hwy 11 at South River & 2.5 hours from Toronto. The facility features 24 major structures totaling over 21,500 sq. ft. including full service Dining Hall, Assembly Hall, Rec Hall, Craft Hall, 3 bedroom Manager's Residence, Motel Unit, 11 cabins/bunkies, Staff House, Workshop/Garage, Boathouse, Shower & Washroom Stations, multiple decks, patios & balconies, interior road & trail network, soccer field, archery range, basketball court, docks, & much more. Recently upgraded water system. All other systems operable. Get year round enjoyment on beautiful Deer Lake!

Directions Hwy 11 North to Exit #282 boundary/Mountainview Rd. From exit follow the Camp Peak signs & turn left onto Boundary Rd & go over the Hwy to Tower Rd. Turn RGT on Tower & follow to Ottawa Ave. then bear left onto Municipal Rd. Follow Municipal Rd to Eagle Lake Rd. Turn left on Eagle Lake Rd to #3665. Follow Camp Peak signs along the way.

### Features

#### Interior Features

Carpeted Floors | Cathedral Ceiling | Ceiling Fan | Fireplace  
Hardwood Floors | Laundry Room | Vaulted Ceiling |  
Window Covers

#### View

Lake | Panoramic | Water View | Woods

#### Heating

Central Electric | Electric Baseboard | Forced Air | Fuel Oil |  
Propane | Wood

#### Exterior Finish

Siding | Vinyl | Wood

#### Roof

Asphalt Shingles | Metal

#### Appliances

Dishwasher | Double Oven | Dryer | Freezer | Gas Range |  
Generator | Hood Fan | Microwave | Outdoor Grill | Oven  
Range | Refrigerator | Stove | Washer | Washer/Dryer Hookup

#### Sewer/Water Systems

Private | Septic | Well

#### Lot Features

Boat Facilities | Clubhouse | Courtyard | Deck | Front Porch |  
Garden Area | Lawn | Patio | Shed | Trees / Shrubs



Photos



Aerial of Property



Main Gate Road Sign



Road in to Main Site



Waterfront with Beach Volleyball



Waterfront - Sandy Beach



Waterfront Views from Dining Hall Deck



Waterfront Boat House Area



Waterfront View from Upper Deck



Waterfront Gate



Dining Hall - North Side (2)



Dining Hall - North Side



Dining Hall @ Sunset



Dining Hall - East Side



Dining Hall - South Side



Dining Hall - West Side





Dining Hall - West Side Deck



Dining Hall - Interior (1)



Dining Hall - Interior (2)



Dining Hall - Interior (3)



Kitchen - Moffat Stove & Convection



Kitchen - Storage Room



DH - Upstairs Bedroom 5



DH - Upstairs Bedroom 4



DH - Upstairs Bedroom 3



DH - Upstairs Bedroom 2



DH - Upstairs Bedroom 1



DH - East Stairs



View of Waterfront



Assembly Hall & Theatre



Assembly Hall - Main Entry area





Assembly Hall Interior



Assembly Hall Interior & Theatre



Assembly Hall - Theatre Stage



Rec Hall



Rec Hall



Rec Hall & Staff Cabin



Staff Cabin



Craft Shop



Motel #1 & #2



Motel #1 & #2 - Front View



Motel #1 & #2 from Rear



Motel #1



Motel #1 - Typical Room



Motel Unit #1 - Unit 3PC Bathroom



Motel #2





Motel #2 - Typical 1 Bedroom unit



The Homestead Retreat Centre



The Homestead Retreat Centre



Tuck Shop



Tuck Shop Interior



Tuck Shop Deck Area @ Waterfront



Cabins 1 - 7



Cabin 8 -10 & Washrooms



Manager's House



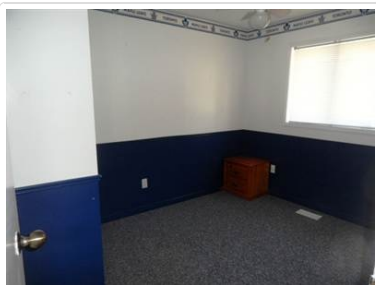
MH - Living Room



MH - Kitchen Area



MH - Bedroom 2



MH - Bedroom 3

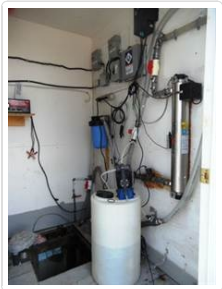


MH - Master Bedroom with 2 PC Ensuite



Pumphouse





Water System & Drilled Well



Workshop



Gas Pump Station



Floating Dock - New



Basketball Court



Field Area and Archery



Soccer Field Area



Soccer Field



Waterfront



Beach Volleyball



Open Space



Open Area



Beachfront