

A photograph of a grand, ornate interior space, likely a gallery or museum. The ceiling is highly decorated with intricate white stucco work and a central fresco of a blue sky with clouds. A large, multi-tiered chandelier with many white candles hangs from the center. The walls are covered in various frescoes and murals, including a large one on the right wall depicting a figure in a landscape. There are several doorways and arches, some with decorative frames. The floor is made of stone or tile. The overall atmosphere is one of historical grandeur and artistic richness.

THE CYNTHIA CORBETT GALLERY

PULSE 2016

The Cynthia Corbett Gallery  
15 The Downs, London, SW20 8UA, UK

Tel. +44 (0) 20 8947 6782  
M. UK +44 (0) 7939 085 076  
M. US +1 773 600 7719  
info@thecynthiacorbettgallery.com  
www.thecynthiacorbettgallery.com  
www.young-masters.co.uk

corbettPROJECTS →

THE CYNTHIA CORBETT GALLERY

# PULSE CONTEMPORARY ART FAIR

## NEW YORK

*3 - 6 March 2016*

*Booth A-302*

*The Metropolitan Pavilion  
125 West 18th Street  
New York, NY 10011*

# FABIANO PARISI



Fabiano Parisi  
*Il Mondo Che non Vedo 202 - Italy, 2016*  
Edition of 8  
C-type photograph mounted on dibond in tray frame  
43.3 x 53.1 in



Fabiano Parisi  
*Il Mondo Che non Vedo 201 - Italy, 2016*  
Edition of 8  
C-type photograph mounted on dibond in tray frame  
39.4 x 59 in





Fabiano Parisi  
*The Empires of Light Series, No. 03 - USA, 2014*  
 Edition of 8  
 C-type photograph mounted on dibond in tray frame  
 29.5 x 43.3 in.

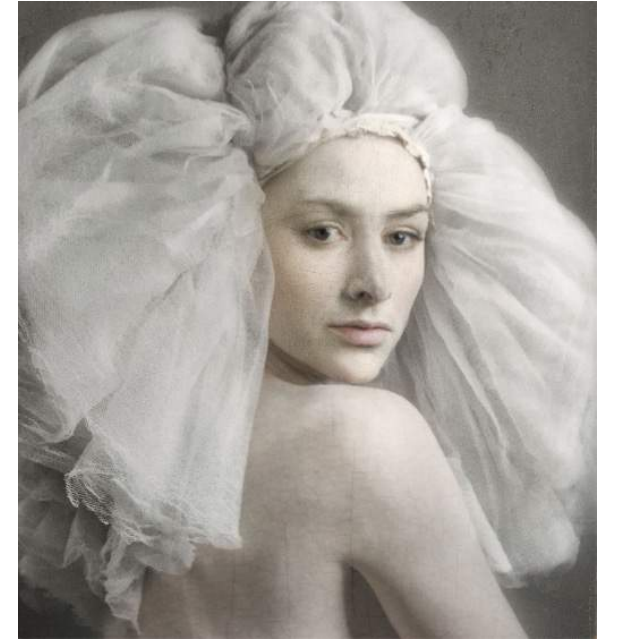


Fabiano Parisi  
*The Empires of Light Series, No.02 - USA, 2014*  
 Edition of 8  
 C-type photograph mounted on dibond in tray frame  
 29.5 x 43.3 in.

# ISABELLE VAN ZEIJL



Isabelle Van Zeijl  
*She*, 2014  
Edition of 7  
Perspex face mounted C-print on dibond in tray frame  
43.3 x 39.4 in



Isabelle Van Zeijl  
*That is Her*, 2014  
Edition of 7  
Perspex face mounted C-print on dibond in tray frame  
43.3 x 39.4 in



Isabelle Van Zeijl  
*You & I*, 2016  
 Edition of 7  
 Perspex face mounted C-print on dibond in tray frame  
 43.3 x 39.4 in



Isabelle Van Zeijl  
*Youth*, 2016  
 Edition of 7  
 Perspex face mounted C-print on dibond in tray frame  
 43.3 x 39.4 in

# TOM LEIGHTON



Tom Leighton  
*The Capitol*, 2016  
Edition of 5  
C-type digital print, perspex mounted  
60 x 60 in



Tom Leighton  
*Flatiron*, 2016  
Edition of 5  
C-type digital print, perspex mounted  
72 x 28 in





Tom Leighton  
*The Lakes*, 2015  
Edition of 5  
C-type digital print, perspex mounted  
63 x 108.8 in

## CREDITS

PULSE CONTEMPORARY ART FAIR  
3 - 6 March 2016

Published by The Cynthia Corbett Gallery on the occasion of Pulse Contemporary Art Fair 2016

All images courtesy the artists/The Cynthia Corbett Gallery

Design by Marina Maniadaki

No part of this publication may be reproduced in any format without the express permission of the publishers.

Printed in the UK

**The Cynthia Corbett Gallery**  
15 The Downs, London, SW20 8UA, UK

Tel. +44 (0) 20 8947 6782  
M. UK +44 (0) 7939 085 076  
M. US + 1 773 600 7719  
[info@thecynthiacorbettgallery.com](mailto:info@thecynthiacorbettgallery.com)  
[www.thecynthiacorbettgallery.com](http://www.thecynthiacorbettgallery.com)  
[www.young-masters.co.uk](http://www.young-masters.co.uk)



