



### **Product Information Bulletin**

**Number:** 8634  
**Date:** May 11, 2015  
**Division:** Wayne Dalton  
**Product Family:** Carriage House Steel Collection  
**Product Series:** Residential Models 9405-5145 and 9700  
  
**Topic:** New Camden and Hampton Designs

---

**To:** All Wayne Dalton Dealers  
**From:** Mark Sawicki  
**RE:** New Camden and Hampton Designs

Effective May 11, we will be launching two new designs for Models 9405 and 9700: Camden and Hampton. These new designs will provide a recessed panel look for both flush and variable-panel size designs, with the 9700 Hampton offering a Stockton 1 insert design. The Hampton design was specifically designed to maintain a certain aesthetic appearance, and in order to maintain uniform appearance the door will be offered in the following widths: 8', 9', 10', 16' and 18'. The Camden will be offered for the same sizes offered today for the 9405/5145.

See below pictures for some illustrations of these options, as well as some additional details on the product launch.

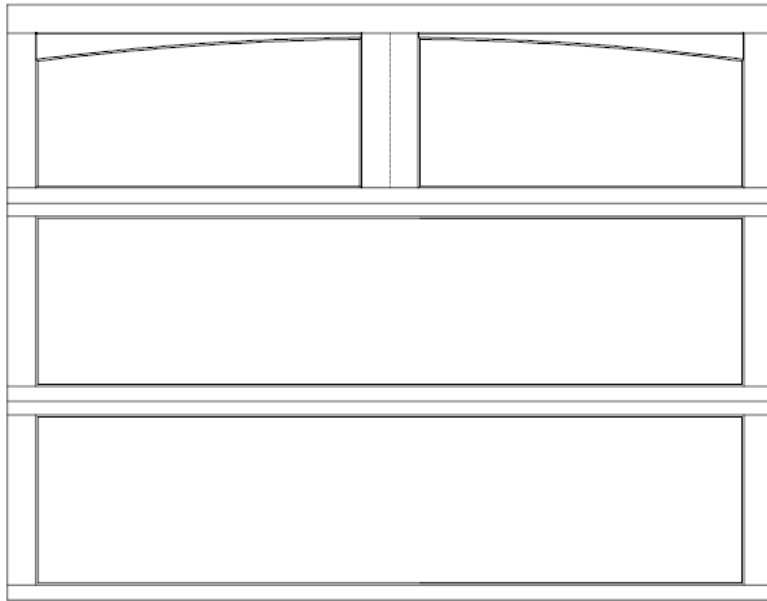


Figure 1: Single Wide 9700 Camden with Arched Top Section  
(also available with Windows in the top section )

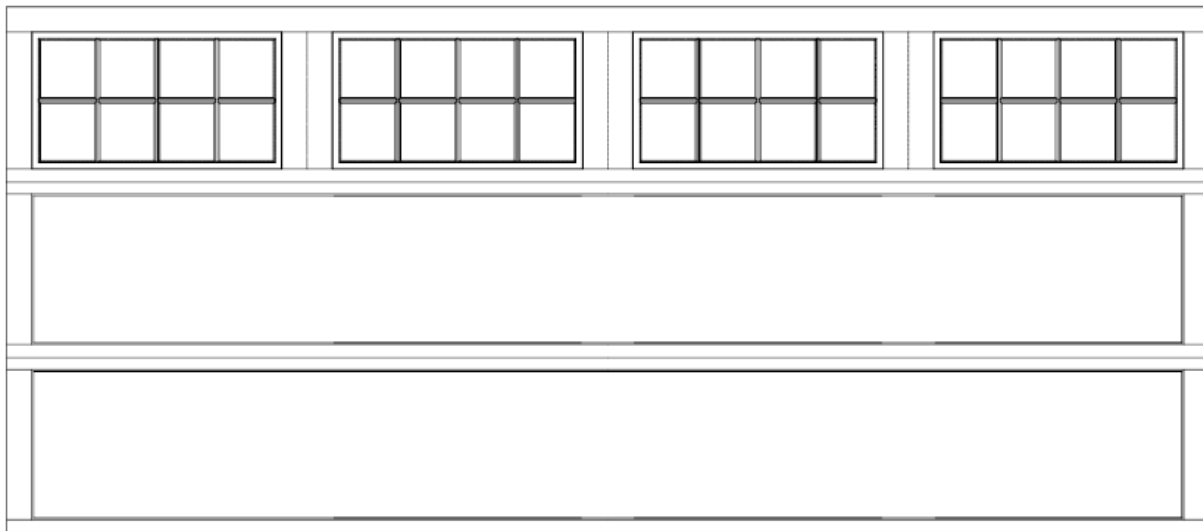


Figure 2: 9700 Double Wide Camden with Windows  
(also available with arches in the top section)

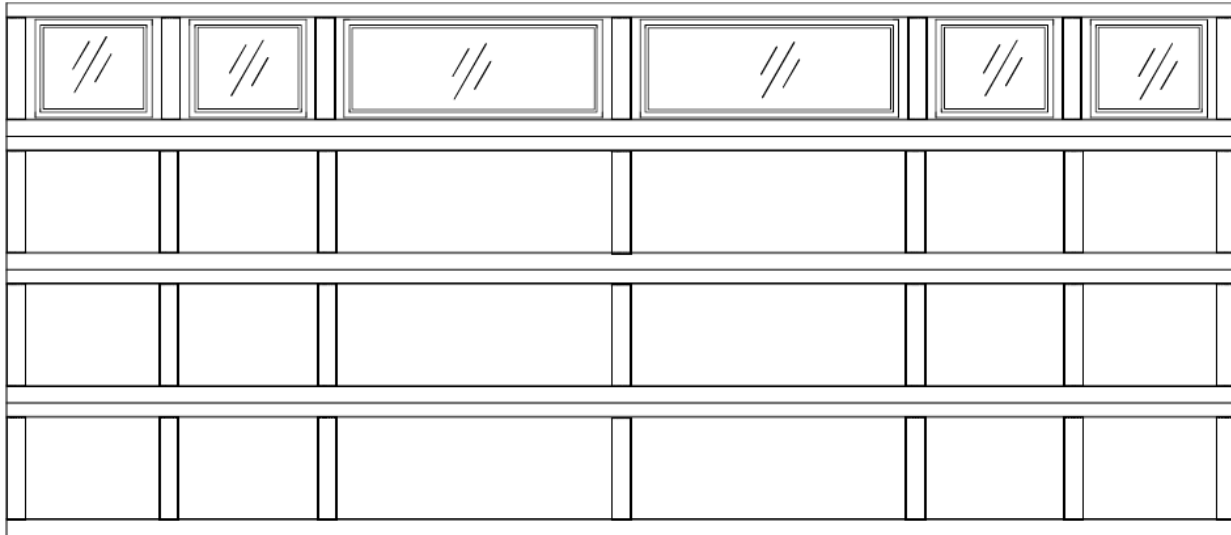


Figure 3: 9405 Hampton Double Wide with Windows

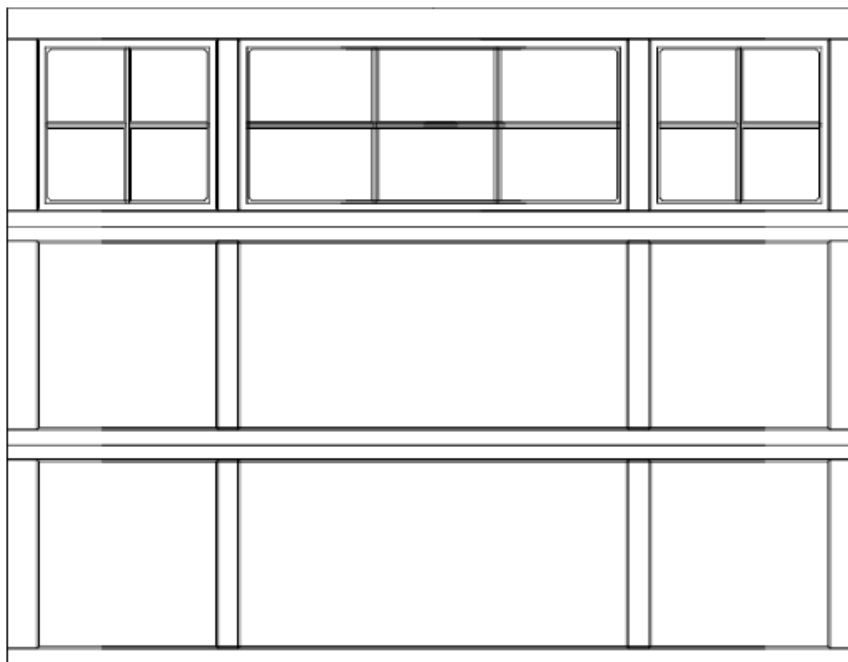


Figure 4: 9700 Hampton Single Wide with Windows and Stockton Inserts

### Wind Load

- 9700- Camden will be available with wind load at time of launch (using the current FBC and TDI approvals), and Hampton will be available in the upcoming months.
- 9405- Camden and Hampton will both be available with wind load at time of launch (using the current FBC and TDI approvals)

**Pricing and Availability/Support**

- The price book has been updated for these two options including glazing and Stockton inserts for the 9700
- Camden will be available with 6, 8, 12, 24 or 32 lite top for the 9700
- Hampton will not be available with Arched tops on the 9700
- The brochures have also been updated and will be available at the time of launch
- The website and partner connect will be updated on May 11 as well.

If you have any questions, please contact your customer service team or DSM.

Thanks,

A handwritten signature in black ink, appearing to be 'MS' or 'Mark Sawicki'.

Mark Sawicki, Residential Product Manager