

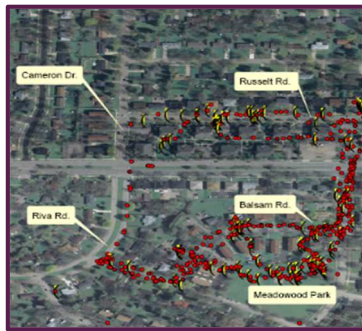


# **Chiloquin**

## **Residents and Friends**

### **Join Us for Dinner & Conversation!**

***FREE Event Hosted by Oregon State University Extension GROW Healthy Kids and Communities Project***



- Join us for a light dinner catered by Potbelly Café
- Share your experiences and comment on a slide show created by Chiloquin residents about how parts of our community make it easy (or hard) for children and families to eat healthy and be active.
- Help community leaders develop strategies that all of us can use to make it easy to be healthy in Chiloquin.

#### **When:**

**Wednesday,  
November 4  
5:00-7:30 P.M.**

#### **Where:**

**Chiloquin  
Community Center**  
140 S 1st Ave, Chiloquin,  
OR 97624

**Please RSVP by November 3rd  
so we can plan the meal!**

Email or call:

**Patty Case**  
OSU Klamath Basin Research & Extension Center  
[patty.case@oregonstate.edu](mailto:patty.case@oregonstate.edu) | 541-883-7131

#### **Brought to you by:**

GROW Healthy Kids and Communities and  
the OSU Klamath Basin Research and Extension Center