

# Walcrest Pump Station

*The Dallas Water Utilities is replacing the pump station at Walnut Hill and Hillcrest. DWU Facility Condition Assessment listed Walcrest pump station as 8 poorest condition facility in the system therefore the pump station is in need of replacement. The bidding process began in 2015 and in September 2015 the project was awarded for \$37 million dollars.*



**This is a very large project that will span over several years to complete. Councilmember Gates would like to provide you as much information as possible about this project including lane closures and general project timeline.**

*This timeline is an estimate and subject to change. We will keep you updated throughout the process.*

- Demolition of the existing pump station and reservoir will begin immediately. The demolition process is estimated to last between **9 and 12 months**.
- New construction of the pump station and half of the reservoir is estimated to last **24 months**. Construction of the remaining half of the reservoir will last **12 months**.
- The final stage includes clearing plants and tree removal and is estimated to last **6 months**. There is an expected overlap of all of the phases.
- The total estimate for construction time is **42-48 months**.

DWU has been meeting with the public since 2013 and there is an Ad Hoc Committee including people from Meadows, Crest Meadow, Preston Hollow North and East, and Windsor Park. DWU and the Ad Hoc Committee has met many times throughout the planning process.

**For more information about this project including construction updates and updated lane closures please visit: [www.walcrest.org](http://www.walcrest.org)**



**City of Dallas**



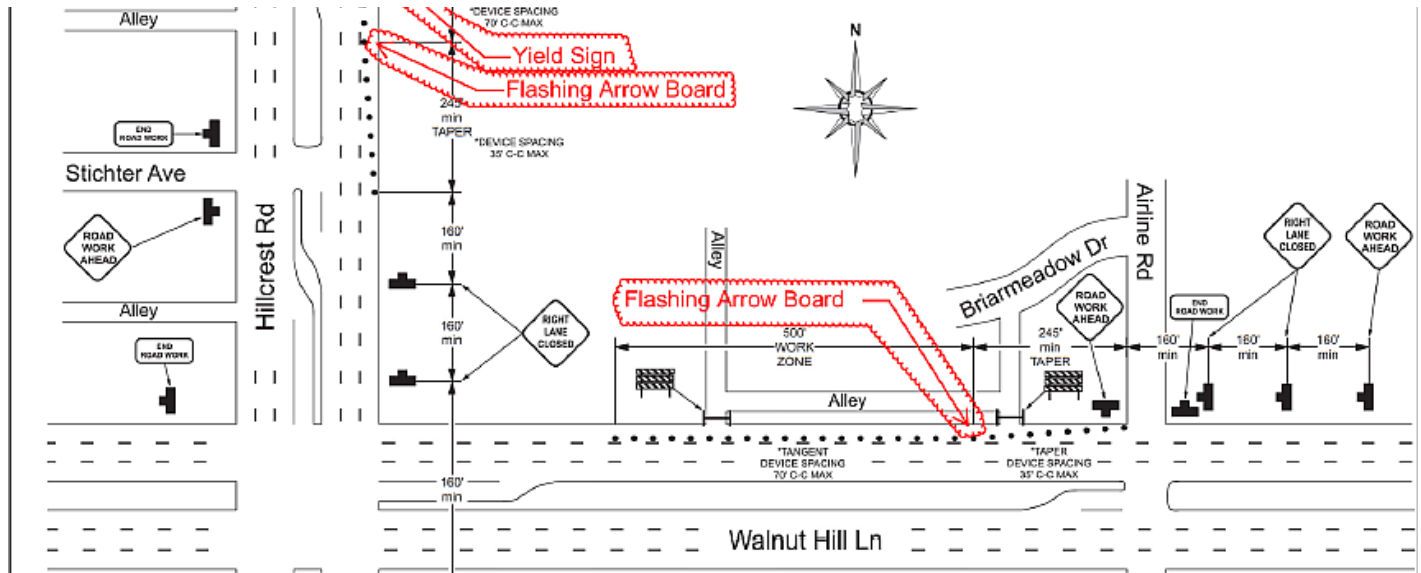
## Landscaping Plan

While there were 10 trees identified for removal to accommodate the reservoir and pump station construction, 21 canopy types are being protected. Trees are only being removed as needed and will continue to be evaluated as construction progresses. The new plantings will total more than 120 new trees.

There was an approved landscape plan as part of the planned development that was approved by Council in November 2014. DWU must install what was proposed as part of the planned development. No feature in the approved plan will be removed if costs exceed the \$1M estimate of the costs associated with the landscape plan. The landscape plan is a separate project slated for 2018-2019. The details of the landscape plan such as types of plants and trees will be decided closer to the landscape project start date.

# Walcrest Pump Station

This project will require lane closures to keep citizens safe from the construction.  
Lane closures will begin **Monday December 14, 2015.**



One lane on west bound **Walnut Hill** will be closed **Mondays at 9 AM and reopened on Fridays at 4 PM** – this is necessary to allow a deceleration lane for the large trucks entering the site. The lane closure starts just west of Airline and ends about 300 feet before the intersection of Walnut Hill and Hillcrest.

One lane on northbound **Hillcrest** will be closed **Mondays at 9AM and reopened on Fridays at 4 PM** – this is necessary to allow trucks to enter onto Hillcrest slowly and get up to traffic speed. The lane tapering will begin 100 feet after intersection of Walnut Hill and Hillcrest and extend all the way to Aberdeen.



There is important valve required on Hillcrest that will require all southbound lanes to be closed. That work is not currently scheduled and is being evaluated for the best time to complete the work.

The lanes will generally be open on weekends, unless the Contractor is hauling material. The lanes will be open anytime the Contractor is not working such as Holidays (other than evenings during normal weekdays).

If you have any further questions about this project or want to learn more:  
Project Website- [www.walcrest.org](http://www.walcrest.org)  
Facebook: Walcrest Pump Station  
Twitter: @Dallas\_Walcrest

As always, do not hesitate to contact the District 13 office for any comments, questions of concerns at 214-670-3816

*Jennifer S. Gates*

**Councilmember Jennifer Staubach Gates**  
**District 13**