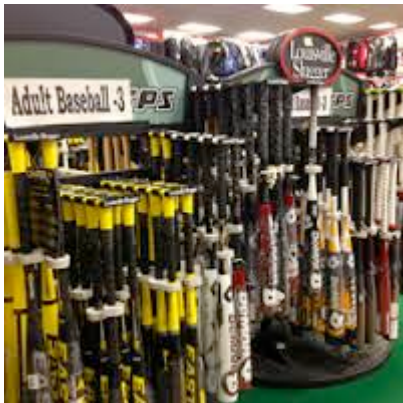




2016 VENDOR'S LUNCHEON



Join us in welcoming & supporting our Commercial Section & Entertainer members of WRAPS! Meet & mingle with the vendors and peruse new products – new entertainment – new trip destinations & program ideas. Don't miss this outstanding networking opportunity!

DATE: Wednesday, February 17, 2016

TIME: **11:30am**

WHERE: Westchester County Center

White Plains, NY (Directions included below)

FEE: **\$15.00 – Members** **\$20.00 – Non-Members**

RSVP BY FRIDAY, FEBRUARY 12th to:

Matt Arone, Dobbs Ferry Recreation

Phone: 693-0024

Email: marone@dobbsferry.com

DIRECTIONS TO THE COUNTY CENTER, WHITE PLAINS
198 Central Avenue, White Plains, NY

1. From New York City

From east side, travel north on FDR Drive to Willis Avenue Bridge to Major Deegan Expressway. Continue north to the Cross Westchester Expressway (I-287) eastbound. Exit 5, "Route 119 East-White Plains." County Center is 1/2 mile on the left.

2. From west side, take West Side Highway north to Saw Mill River Parkway to Cross Westchester Expressway (I-287) eastbound and follow directions as in #1 above.

3. I-95 (The New England Thruway) to Exit 21; follow to Cross Westchester Expressway (I-287) westbound. Exit 5, "Route 100," turn left. Follow to traffic light at intersection of Route 119 and turn left. The County Center is approximately 3/4 mile on the left.

4. From Tappan Zee Bridge and points West:

Follow New York State Thruway (I-87) to the Cross Westchester Expressway eastbound; exit 5 "Route 119 East-White Plains." County Center is 1/2 mile on the left.

5. From Connecticut/New England

Take I-95 (The New England Thruway) to Exit 21, follow to Cross Westchester Expressway westbound and follow directions as in #3.

Merritt Parkway (Route 15) southbound (in New York, name changes to Hutchinson River Parkway). Follow to Cross Westchester Expressway westbound and follow directions as in #3.

6. From Upstate New York:

Taconic State Parkway to its southern end; follow signs to Bronx River Parkway and follow three miles to White Plains. Use exit 22; the County Center is immediately on the right side.

