



PRAIRIE
DISTRICT
NEIGHBORHOOD
ALLIANCE

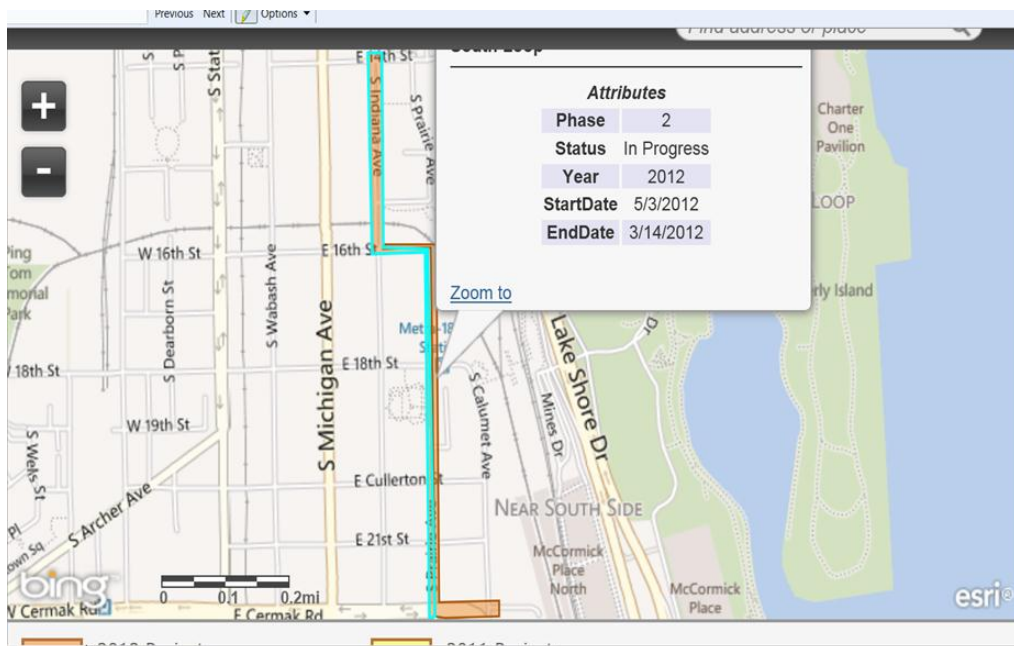
COMMUNITY INFRASTRUCTURE ANNOUNCEMENT – March 20th, 2012 PEOPLES’S GAS ACCELERATED MAIN REPLACEMENT

Dear South Loop / Near South / Central Station / Prairie District Residents,

See the attached information from the Peoples Gas Website, Project Permit & Construction Drawings in regard to ongoing People’s Gas Main replacement which will impact gas service, and street & sidewalk access. The project entails the replacement of older 16” through 20” natural gas main piping in the streets on Prairie, 16th, and Indiana Avenue from 14th Street to 21st Street. This work includes:

- Excavation and trenching for new main piping, exposure of existing main piping for removal, testing, rehabilitation, or tie-in to service piping to existing customers.
- Excavation, removal, closure, and repair of various sidewalk, parkway, and curb areas for entire condo association, homeowners association, business, or individual homeowner, service is tied into existing customer gas line or metering via smaller 1” through to 4” steel or Yellow Plastic piping as specified.
- Traffic measures, signage, flagman, and temporary rerouting and covering of excavation with temporary steel plating

ADDITIONAL PROJECT INFORMATION & 2012 SOUTH LOOP PROJECT MAP Prairie & Indiana Ave Work Projected to last through April of 2012





PRAIRIE
DISTRICT
NEIGHBORHOOD
ALLIANCE

POTENTIALLY IMPACTED ADDRESSES, CONDO/HOMEOWNERS ASSOCIATIONS, HOMES, or BUSINESSES for Service Outage

Please review your house or mail for additional information or contact People’s at 866-556-6001.

POTENTIAL IMPACTED PRAIRIE AVE ADDRESSES or CONDO ASSOCIATIONS	POTENTIAL IMPACTED INDIANA AVE ADDRESSES or CONDO ASSOCIATIONS
1600 S. Prairie Ave / East 16th	1400 S. Indiana – 1532 S Indiana
1626 S. Prairie Ave	1532 S. Indiana
1629 S. Prairie Ave	1600 S. Indiana (TBD)
1712 S. Prairie Ave	1601 S. Indiana
1717 S. Prairie Ave	
1811 S. Prairie Ave	
1900 S. Prairie Ave	
1919 S. Prairie Ave	
2001 S. Prairie Ave	
2003 S. Prairie Ave	
2005 S. Prairie Ave	
2007 S. Prairie Ave	
2009 S. Prairie Ave	
2011 S. Prairie Ave	
2013 S. Prairie Ave	
2023 S. Prairie Ave	
2028 S. Prairie Ave	
2110 S. Prairie Ave	
2126 S. Prairie Ave	
300 E Cermak / 2200S Prairie	

PEOPLES'S GAS ACCELERATED MAIN REPLACEMENT PROJECT INFORMATION

www.peoplesgasdelivery.com



MAIN REPLACEMENT PROGRAM

The dedicated professionals of Peoples Gas have provided safe, reliable natural gas service to residents and businesses in Chicago for more than 150 years. This commitment to safety and reliability is ongoing, and our accelerated main replacement program is bringing valuable improvements to your natural gas service.

Upgrading your natural gas delivery system

Just as you have to replace the roof on your house or the tires on your car over time, Peoples Gas is replacing the cast iron gas pipes in its natural gas delivery system to ensure the long-term safety and reliability. In recent years, Peoples Gas has annually replaced about 45 miles of cast iron and ductile iron main with modern polyethylene pipes. In 2011, we increased those efforts. Over the next 20 years, our crews will replace nearly 2,000 of natural gas pipes. That's more than 40 percent of our system.

Our crews will be working in neighborhoods from the North side to the South side and areas in between as we proudly bring a new era of natural gas service to the communities we serve.

Safety

Peoples Gas has an excellent record of safety, and the accelerated main replacement program offers assurance that we'll maintain that record. With a more modern delivery system, there will be fewer interruptions in gas service and fewer repairs. As professionals working for you at Peoples Gas, safety will remain our number one priority.

Reliability

The accelerated main replacement program will make it easier for customers to install today's high-efficiency appliances without the extra cost of pressure boosters. By moving the Peoples Gas system from operating on low pressure to the medium pressure, reliability will increase for both current appliances and newer high efficiency equipment.

Lower Costs Over The Long Haul

By making these improvements sooner rather than later, we'll reduce long-term costs to our customers. By some estimates, as much as \$244 million in net operations and maintenance. How? Being proactive about making improvements

means avoiding more expensive replacements later, allowing us to keep rates lower than they might otherwise be. And by removing aging pipes that require frequent maintenance, we can reduce the cost of ongoing repairs.

As the program moves forward, we'll work closely with Aldermen and community leaders to make sure residents and businesses know when Peoples Gas will be working in their area. Our crews will employ the latest techniques in laying pipe to minimize disruptions to the neighborhood.

AMRP Projects

Construction sites are highlighted on the map below. To search for a location on the map, either enter the address in the upper right hand corner or scroll over the map and use your mouse to navigate. **Be sure to include your address, city and state in your search below.**

For More Information

Keeping you informed is key to your satisfaction and our success, contact us at 866-556-6001.

Frequently Asked Questions from Peoples Gas:

http://www.peoplesgasdelivery.com/company/pdf/main_replacement_brochure.pdf