

# the PROMISE

— RESOURCE CENTER —  
*help a child tomorrow with what you learn today*



**March / April 2016**

## Signing Up for Classes

Here at PRC, we have a passion for education and are excited to have you join us in the pursuit of knowledge!

To register for a class, simply visit our website at [www.thepromisecenter.org](http://www.thepromisecenter.org) or call us at 301-290-0040. You can pay via credit card on the website or over the phone, or via check, cash or money order. Please note that classes must be paid for in advance, so please pay promptly to secure your spot.

## Resource Store

Our Resource Store has multiple tools and supplies available for your art and scholastic needs. Come by the center and take advantage of our equipment and supplies at little or no cost.

Black and White Copies: \$.10/Page      Laminating: \$1.50/Per Foot  
Colored Paper Copies: \$.10/Page      Book Binding: \$2.50/Per Book  
Card Stock Copies: \$.25/Page      Board Maker: \$.50/Page  
Construction Paper: \$2.00/Pack, \$.05/Per Sheet  
Die Cut: FREE

## Inclement Weather Policy

Please remember PRC follows the St. Mary's Public School closings. If after school activities are cancelled for St. Mary's County, then our evening trainings will also be cancelled. If schools are closed, then PRC is closed and the evening trainings are cancelled.

### Stay in the know!

Visit our website to join our mailing list, and you'll receive our bi-monthly e-newsletter, behavior management tips, child care information, updates on local events, and so much more!

[www.thepromisecenter.org](http://www.thepromisecenter.org)

Questions? Email us!

[info@thepromisecenter.org](mailto:info@thepromisecenter.org)

### It Pays to be a Member!

Become a member of the Promise Resource Center for only \$10 a year to save on certain classes, receive coupons and discounts to our Resource Store! To sign up, call us at 301-290-0040.



Find us on  
**Facebook**

Be sure to "like" our page on Facebook to receive updates and fun ideas from The Promise Resource Center!



# ATTENTION!

A new COMAR regulation is now projected to take effect in July of 2017 that will require all licensed early care and education programs (child care centers and family child care home providers) to conduct routine developmental screenings on the children in their programs from infancy until they enter school. These screenings are viewed by the State of Maryland as part of health and wellness and may determine if the child needs further evaluation. This requirement makes it mandatory that all Lead Teachers, Family Providers and Center Directors complete a 4-hour training on the developmental screening process and tools entitled:

**On Track: All Aboard for Developmental Progress.**

This training **must** be completed **before** July of 2017.

Please note, The Maryland State Department of Education approved screening tools are **no longer** offered for free but can be obtained for their full retail price.

Maryland State Department of Education has recommended the following five Developmental Screening Tools:

- 1) **Ages and Stages, Third Edition**
- 2) **BRIGANCE Early Childhood Screens III**
- 3) **Speed Developmental Indicators of Assessment (Speed DIAL-4)**
- 4) **Early Screening Inventory (ESI-R)**
- 5) **Best Beginnings Developmental Screening**

The Promise Resource Center has a copy of all of these developmental screening tools for you to review. Please feel free to stop by to look at them and talk with our staff about this new upcoming regulation.

Please be on the look out for future offerings of this mandated class.

**\*\*EARN A PAU \*\***

**How: Lead teachers and family providers conduct developmental screenings PRIOR to the implementation of the developmental screening regulation.**

**Documentation: Letter of confirmation from the Director of the program or Registered Family Provider**





Food, Music, Arts & Crafts,  
Giveaways and a 40' Drive-In  
Movie Screen!

Funds raised will benefit  
early childhood mental  
health programs in southern  
Maryland!

**St. Mary's County Fairgrounds**

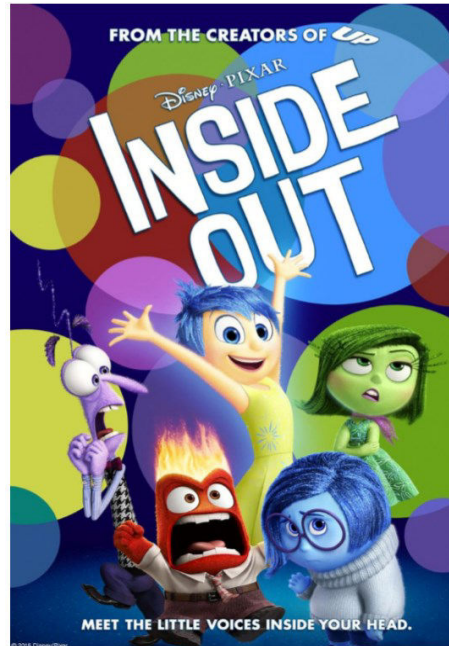
**May 13, 2016**

**4pm-10pm**

3 Ticket Options!

Tickets on sale now!

It's more than just a  
movie, it's a memory!



**[thepromisecenter.org/  
drivein](http://thepromisecenter.org/drivein)**

## **Earn PAU's!**

Volunteer Opportunities are available to those who would like to help The Promise Resource Center put on this fun, family event that will spread awareness of children's mental health concerns and the importance of early intervention! Please contact us at 301-290-0040 to learn more about what you can do to show your support., or sign up at <http://vols.pt/t75Ray>

# *PRC March Highlights*

## **Director's Round Table**

March 10- Come join our Director's Networking Meetings at the Promise Resource Center! We meet every other month and have open discussions on topics important to you. We hope that all three counties will be represented at this networking opportunity. Please RSVP to Sarah Sutherland at 301-290-0040!

Location: The Promise Resource Center, 29958 Killpeck Creek Ct., Charlotte Hall, MD 20622

Date: 3/10/2016

Time: 1 PM

## **Emergency and Disaster Preparedness Workshop**

March 19– Back by demand! We will be offering Emergency and Disaster Preparedness for those center, family, and informal child care providers who would like to learn about preparing for emergency situations and disasters. Successful completion of an emergency plan will meet the specific needs of your child care setting!

Location: The Promise Resource Center, 29958 Killpeck Creek Ct., Charlotte Hall, MD 20622

Date: 3/19/2016

Time: 9 AM– 4 PM

Fee: \$50

# *Southern Maryland March Highlights*

## **Summer Camp Showcase**

March 15- Find out about the numerous and varied summer camp and activity options for your kids in St. Mary's County! Many vendors will be available to share information about their camps and summer program offerings at this free event.

Location: SOMD Higher Ed Center, 44219 Airport Road, California, MD

Date: 3/15/2016

Time: 5 PM



## **Easter Festival**

March 19-The Easter Festival has become a staple of the Southern Maryland community every Spring and features egg hunts for all ages, photos with the Easter Bunny, amusement rides, live entertainment, free arts and crafts, egg decorating contest, face painting, and goods and services for sale by local area vendors. This rain or shine event is open for the entire community.

For \$5.00, attendees can participate in the egg hunt, have a photo taken with the Easter Bunny and enjoy local music and fun entertainment. Additional fees apply for amusement rides and various food vendors will be onsite.

Location: St. Mary's County Fairgrounds, 42455 Fairgrounds Road, Leonardtown, MD

Date: 3/19/2016

Time: 8 AM



# How to: Repurpose Plastic Easter Eggs



**Fine Motor/ Art Activity: Egg Maracas-** Fill eggs with popcorn, seeds, rice, or anything else you may have. Tape the eggs between 2 spoons and decorate. Now get to shakin'!

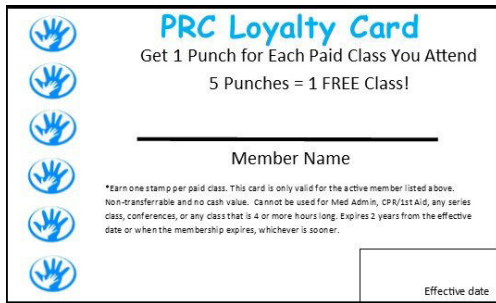
Younger children can work on fine motor skills by carefully pouring the popcorn into the egg and gently wrapping the tape around the spoons and egg.



**Social/ Emotional Activity: Easter Egg Tea Cups-** Glue plastic egg halves to buttons. Cut and glue small pieces of ribbon to the side to make a handle. Enjoy playing tea time —but don't forget to use your manners and be polite! "Please" and "thank you" are very important expressions in the tea party world!



# PROMISE



**Our Loyalty Card program is available to all members!**

To show our appreciation, members will earn one free class after attending 5 paid classes. In addition, members will continue to receive special prices, coupons and discounts to trainings and our Resource Store! If you're an existing member, call us or stop in to request your new Loyalty Card!

Money raised through membership to our agency goes to support our work with at-risk families, informal caregivers and Grandparents who care for their grandchildren. One of the overarching goals each of these programs maintains is to improve children's school readiness skills, so they are better prepared for success. Through these programs, families and caregivers receive a free packet of learning games and activity materials for children ages birth-6yrs that focus on building early math, science, social emotional and literacy skills!

## Become a Member!

### Membership Application

Please send application form with check or money order to:

***The Promise Resource Center  
29958 Killpeck Creek Court  
Charlotte Hall, MD 20622***

Name \_\_\_\_\_

Membership: \_\_\_\_\_ Renewal \_\_\_\_\_ New

Address \_\_\_\_\_

City \_\_\_\_\_ State \_\_\_\_\_ Zip \_\_\_\_\_

\_\_\_\_\_ \$10 Licensed Provider/Potential Provider/Other

Home Phone \_\_\_\_\_

\_\_\_\_\_ \$25 Group/Center/Director

Email address \_\_\_\_\_

## Extended Hours

Remember we will be open for extended hours by appointment only and with advanced notice. All you need to do is call 301-290-0040 to schedule the date and time you want.

*Our regular business hours are  
Monday-Friday from 8:30am-5:00pm*

## Complaint Policy Pertaining to CCRR Service

All of the resource centers of the Maryland Child Care Resource Network strive to provide high-quality service to their constituencies. However, in the event that someone has concerns about an incident regarding some aspect of service at a regional child care resource center or feels that he or she was mistreated by a staff member of a resource center, the caller can contact the resource center involved. If the person is not satisfied with the way the concern or complaint was handled by the regional resource center, he or she can contact the network manager at the Maryland Family Network at 410-752-7588.

## **Did You Know We Can Bring Our Trainings To Your Center?**

**We offer many of our trainings on-site for as few as 6 people!**

### **Cost:**

**2 Hour Training:  
\$30 per person**

**3 Hour Training:  
\$40 per person**

**Specialty Training  
prices vary.**

**View our training calendar on our website to see some of our main class offerings, or call us for a training tailored specifically to your needs!**

For more information or to schedule an on-site for your location contact PRC at  
(301)290-0040 or email  
[register@thepromisecenter.org](mailto:register@thepromisecenter.org)





# PROMISE

Be sure to look for the New Trainings being offered this quarter!

## Registration Policy

- **Payment and registration form must be received at the time of registration.** To register for a class: mail check or money order to the Resource Center, drop off payment or call our office to pay with credit card by phone during our regular business hours, Monday-Friday, 8:30am-5:00pm.
- Online registration at our website: [www.thepromisecenter.org](http://www.thepromisecenter.org)
- No Walk-ins permitted. No money will be accepted at the door.
- Due to space limitations, liability issues and the need for a learning environment, **children are not allowed** to attend any workshops. Please make child care arrangements in advance.
- Confirmations will not be mailed. You may call 301-290-0040 to verify your enrollment in the class.
- There is a \$40 service charge for returned checks.
- You must be present and participate in the entire class to receive a certificate for the clock hours listed. **Classes begin at the stated time and no admittance is permitted 15 minutes after the class has started. Late arrivals will not receive certificates, refunds, or transfers for the class.**
- If you have lost or misplaced a certificate, there is a \$5.00 replacement fee.
- Please call 301-290-0040 in advance of class if you need assistance or require special accommodations.
- All classes are open to the public.

## Cancellation Policy

- We do not issue refunds if a student cancels their enrollment in a class. If you need to cancel, you must call the Promise Resource Center 24-hours in advance and we will gladly give you a credit for another class. \* **Cancellations must be made 48 hours in advance for CPR and First Aid** or your payment will be forfeited and no credits will be issued.
- Credit for cancelled classes must be used to attend another class within 60 days of the cancellation or it is forfeited.
- Promise Resource Center reserves the right to cancel a class if, the day prior to the class, if we don't have the necessary number of paid participants. You will receive a call notifying you of the cancellation and your money will be refunded or a credit will be issued. Credit must be used to attend another class within 60 days of the cancellation or it is forfeited.
- **Promise Resource Center follows St. Mary's County Public School's inclement weather cancellation schedule. If schools are closed or after-school activities are cancelled due to inclement weather, our office will be closed and the class for that day will be cancelled. If at anytime you feel uncomfortable traveling due to inclement weather, please call prior to the class and we will be happy to transfer you to another class.**
- **For current cancellations, please call 301-290-0040.**

The Promise Resource  
Center

29958 Killpeck Creek Ct.  
Charlotte Hall, MD 20622

(301) 290-0040 or

(866) 290-0040

Visit us on the web at

[www.thepromisecenter.org](http://www.thepromisecenter.org)

## To register for a class:

- ◆ Mail registration form, check, money order, or credit card information to the Promise Center
- ◆ Drop off payment during our regular business hours, Monday-Thursday, 8:30 am-5:00 pm
- ◆ Call our office to pay with a credit card by phone
- ◆ Visit our website and register online with a credit card

*The Promise Resource Center  
provides*

*low-cost workshops for child  
care providers,  
parents and the  
community. Our evening and  
Saturday workshops meet  
MSDE/Office of Child Care  
requirements for Core of  
Knowledge training.*

## LOCATE: Child Care

If you are a licensed child care program or family child care provider, you can take advantage of this free method of advertising by keeping your LOCATE database record current.

- ♦ Report changes to your fees, email, hours, and etc.;
- ♦ Report vacancies.
- ♦ Request a database questionnaire;
- ♦ Leave a question and someone will call you back.

Call toll free **1-866-752-1614**, provider message service.

### LOCATE Complaint Policy

Through the LOCATE service, parents share feedback with the LOCATE staff on the programs in the files: licensed child care centers, registered family child care providers and accredited preschools and camps. While this feedback is at times positive, it sometimes concerns complaints parents have about child caregivers. Of course, LOCATE and the Maryland Child Care Resource Network want to use this information in a way that is fair to providers and parents, while protecting children, as well.

Therefore, the LOCATE Complaint Policy was developed and has been in effect since its approval by the Maryland Committee for Children Board in November, 1983. According to this policy, all complaints made to LOCATE about child care providers/facilities are recorded. The type of complaint is then determined:

**Less Serious Complaint - No Violation:** complaints which do not involve violations of child care regulations; complaints about situations which do not pose a threat to the safety, health or welfare of a child.

**Less Serious Complaint Involving Violation:** complaints of any violation of Office of Child Care (OCC), Maryland State Department of Education (MSDE) regulations, and/or the Health Department which do not pose a threat to the health, safety or welfare of a child.

**Serious Complaint:** any threat to the immediate health, safety, or welfare of a child.

When a parent calls LOCATE with a complaint, the referral specialist advises him/her to register the complaint directly with the appropriate regulatory agency and/or Protective Services. Names and telephone numbers of the person with whom the parent should speak are provided.

When a Serious Complaint is received concerning one of the providers of facilities in the LOCATE system, no referrals are made by the referral specialists to that provider/facility. The LOCATE Director also communicates with the appropriate regulatory agency personnel about the complaint, and maintains the "hold" on the provider/facility until the agency's disposition of the complaint is known. Should the investigation result in no action, the "hold" status is removed from that provider's/facility's records. Should the license or registration be revoked, the record is removed from the LOCATE files. Providers are advised of LOCATE's actions in writing.

A provider may appeal the LOCATE Director's decision to cease referrals. Appeals are first addressed to the LOCATE Advisory Committee. Final appeals may be made to the board of the Maryland Family Network.

It is the position of LOCATE and MFN that the Complaint Policy is both fair and workable. Safeguards and due process are afforded to the care givers in the files, and parents' and children's rights to safety are addressed, as well. Any questions on this policy should be addressed to Arna Griffith, Director, LOCATE: Child Care.



**This publication was produced as a work for hire for the benefit of and with funds from the Maryland State Department of Education.**

# March 2016

Sunday	Monday	Tuesday	Wednesday	Thursday	Friday	Saturday
		1	2 Maryland Excels: Level 2 2P 6:30pm-8:30pm	3 Including All Children and the Americans with Disabilities Act 3SN 6:00pm-9:00pm	4	5
6	7	8 Children & Conflict: Violence 2CD 6:30pm-8:30pm	9	10 Safe Environments 3 HSN 6:00pm-9:00pm Director's Table 1:00pm	11	12 Medication Administration 6HSN 9:00am-4:00pm CPR& First Aid 9:00am-1:00pm
13	14 Ethics & Professional Behavior 2 P 6:30pm-8:30pm	15	16 Including All Children and the Americans with Disabilities Act 3SN 6:00pm-9:00pm	17	18	19 Emergency & Disaster Preparedness 3 HSN & 3 P 9:00am-4:00pm
20	21 Providing a Print Rich Environment 2CU 6:30pm-8:30pm	22 Supporting Breastfeeding In Child Care 6:30pm-7:30pm	23	24	25	26
27	28	29	30	31		

# March 2016

## **3/2— Maryland Excels: Getting to Level 2 (2P)**

This training is for anyone currently published at a level one and are interested in working toward publishing at a level two (2). This class will review and interpret level two (2) criteria and work on developing required documentation.

*Time: 6:30pm-8:30pm, Instructor: Sara Martin*

*Fee: \$15 Member, \$15 Non-Member*

## **3/3— Including All Children & The Americans with Disabilities Act (3SN)**

This training will go over the requirements of the ADA, inclusionary practices in early childhood and school age programs. Also, learn about the local, state and national resources available to child care providers.

*Time: 6:00pm - 9:00pm, Instructor: Sarah Sutherland*

*Fee: \$30 Member, \$35 Non-Member*

## **3/8— Children and Conflict: Violence (2CD)**

Children can experience violence directly or indirectly. Learn what effect this can have on their social behavior and some strategies that can be given to help children cope with real-world violence.

*Time: 6:30pm-8:30pm, Instructor: Kelsey Colvin*

*Fee: \$25 Member, \$30 Non-Member*

## **3/10— Safe Environments (3HSN)**

Create a safe environment for children to play and grow in your center or home. This class is about making sure children are comfortable and confident that their safety is a priority while in your care.

*Time: 6:00pm-9:00pm, Instructor: Julie Lowthert*

*Fee: \$30 Member, \$35 Non-Member*

## **3/12— Medication Administration (6HSN)**

This training course is a 6-hour competency-based class approved by MSDE/OCC to train child care providers to safely administer oral, topical and emergency medication to children in a child care setting. Upon successful completion of this course each participant will receive a certificate of completion which will allow the participant to administer MSDE/OCC approved medications to infants, toddlers, preschool and school aged children in child care centers and homes. You must pass a pre and post test. You may bring lunch or go to a fast-food restaurant in the area.

*Time: 9:00am-4:00pm, Instructor: Pat Jennings*

*Fee: \$60 Member, \$60 Non-Member*

## **3/12— CPR & First Aid**

Participants will be trained in CPR for the infant, child and adult. This class meets the Maryland Child Care Administration's requirements for child care facilities.

*Time: 9:00am-1:00pm, Instructor: Jay Hyde*

*Fee: \$65 Member, \$65 Non-Member*

## **3/14— Ethics and Professional Behavior (2P)**

Having a code of ethics is one of the fundamental qualities of an early childhood educator. This training uses NAEYC's Code of Ethics of conduct, decision making and communication.

*Time: 6:30pm-8:30pm, Instructor: Sara Martin*

*Fee: \$25 Member, \$30 Non-Member*

## **3/16— Including All Children & The Americans with Disabilities Act (3SN)**

This training will go over the requirements of the ADA, inclusionary practices in early childhood and school age programs. Also, learn about the local, state and national resources available to child care providers.

*Time: 6:00pm - 9:00pm, Instructor: Sarah Sutherland*

*Fee: \$30 Member, \$35 Non-Member*

## **3/19— Emergency and Disaster Preparedness (3HSN,3P)**

This course is designed for center, family, and informal child care providers. Successful completion requires completion of emergency plan that will meet the specific needs of your child care setting.

*Time: 9:00am-4:00pm, Instructor: Sarah Sutherland*

*Fee: \$50 Member, \$50 Non-Member*

## **3/21— Providing a Print Rich Environment (2CU)**

Participants will be introduced to the reading and writing connection and stages of emergent writing.

*Time: 6:30pm-8:30pm, Instructor: Julie Lowthert*

*Fee: \$25 Member, \$30 Non-Member*

## **3/22— Supporting Breastfeeding In Child Care**

This is a required course for all directors, infant and toddler staff, and family providers.

*Time: 6:30pm-7:30pm, Instructor: Kelsey Colvin*

*Fee: \$10 Member, \$15 Non-Member*

### **Core Of Knowledge Areas:**

**(HSN) Health, Safety and Nutrition, (CD) Child Development,**

**(CU) Curriculum, (P) Professionalism,**

**(CO) Community, (SN) Special Needs**

# April 2016

Sunday	Monday	Tuesday	Wednesday	Thursday	Friday	Saturday
					1	2
3	4 ADHD 2SN 6:30pm-8:30pm	5	6 Exploring the World of Dinosaurs 2CU 6:30pm-8:30pm	7 Kindness in Curriculum 3CU 6:00pm-9:00pm	8	9
10	11	12 Center Aide Orientation 3P 6:00pm-9:00pm	13 Including All Children and the Americans With Disabilities Act 3SN 6:00pm-9:00pm	14	15	16 Medication Administration 6HSN 9:00am-4:00pm
17	18	19 Eliminating Challenging Behavior 2CD 6:30pm-8:30pm	20 General Nutrition 2HSN 6:30pm-8:30pm	21 Stress! It's Not Worth It 2P 6:30pm-8:30pm	22	23 CPR& First Aid 9:00am-1:00pm
24	25	26 Learn N Play 2CD 6:30pm-8:30pm	27	28 Path to Math 3CU 6:00pm-9:00pm	29	30

# April 2016

## 4/4— ADHD (2SN)

One common diagnosis is often given for a disorder that has an array of behaviors. Dealing with ADHD can be frustrating for both children and caregivers. This training will discuss the symptoms of ADHD, how it is diagnosed and strategies to help deal with ADHD.

*Time: 6:30pm-8:30pm, Instructor: Donna Bennett*

*Fee: \$25 Member, \$30 Non-Member*

## 4/6— Exploring the World of Dinosaurs (2CU)

Learn how you can incorporate the pre-historic world of dinosaurs into your lesson plan!

*Time: 6:30pm-8:30pm, Instructor: Kelly Hutter*

*Fee: \$25 Member, \$30 Non-Member*

## 4/7— Kindness in Curriculum (3CU)

This training will go over how you can keep kindness at the forefront of your classroom. Learn about lesson plans and themes all focused on kindness and creating a safe environment for the children in your care.

*Time: 6:00pm - 9:00pm, Instructor: Sara Ott*

*Fee: \$30 Member, \$35 Non-Member*

## 4/12— Center Aide Orientation (3P)

Portfolios are like a big puzzle. When presented in a meaningful way, they can be a huge help. Learn what a portfolio is and how it can be helpful.

*Time: 6:00pm-9:00pm, Instructor: Julie Lowthert*

*Fee: \$30 Member, \$35 Non-Member*

## 4/13—Including All Children & The Americans with Disabilities Act (3SN)

This training will go over the requirements of the ADA, inclusionary practices in early childhood and school age programs. Also, learn about the local, state and national resources available to child care providers.

*Time: 6:00pm-9:00pm, Instructor: Sarah Sutherland*

*Fee: \$30 Member, \$35 Non-Member*

## 4/16— Medication Administration (6HSN)

This training course is a 6-hour competency-based class approved by MSDE/OCC to train child care providers to safely administer oral, topical and emergency medication to children in a child care setting. Upon successful completion of this course each participant will receive a certificate of completion which will allow the participant to administer MSDE/OCC approved medications to infants, toddlers, preschool and school aged children in child care centers and homes. You must pass a pre and post test. You may bring lunch or go to a fast-food restaurant in the area.

*Time: 9:00am-4:00pm, Instructor: Pat Jennings*

*Fee: \$60 Member, \$60 Non-Member*

## 4/20— General Nutrition (2HSN)

Learn about keeping healthy and balanced meals and snacks available for the children in your care. It's very easy to lean toward sugary, empty snacks like chips and fruit snacks. However, the healthy choices you make today, will benefit your children in the future.

*Time: 6:30pm-8:30pm, Instructor: Kelly Hutter*

*Fee: \$25 Member, \$30 Non-Member*

## 4/21— Stress! It's Not Worth It (2P)

Participants will be able to define stress, identify the body's response to stress and learn how to handle and reduce stress.

*Time: 6:30pm-8:30pm, Instructor: Kelsey Colvin*

*Fee: \$25 Member, \$30 Non-Member*

## 4/23—CPR & First Aid

Participants will be trained in CPR for the infant, child and adult. This class meets the Maryland Child Care Administration's requirements for child care facilities.

*Time: 9:00am-1:00pm, Instructor: Jay Hyde*

*Fee: \$65 Member, \$65 Non-Member*

## 4/25— Eliminating Challenging Behavior (2CU)

This training will take a look at behavior, transitions and room design. Participants will learn how to improve these areas in their own programs through lecture, interactive activities and a "make and take" project.

*Time: 6:30pm-8:30pm, Instructor: Donna Bennett*

*Fee: \$25 Member, \$30 Non-Member*

## 4/26— Learn N Play (2CD)

This workshop will focus on the different ways that people learn and how to facilitate these different learning styles through play spaces you create in your center or home.

*Time: 6:00pm-9:00pm, Instructor: Julie Lowthert*

*Fee: \$25 Member, \$30 Non-Member*

## 4/28— Path to Math (3CU)

STEM is a hot topic for many child care providers and teachers. Experts suggest that the U.S needs to open up more paths for children to learn about STEM and the opportunities it can provide. Come learn about opening a path to math and see how you can incorporate math into your curriculum and spark interest from your students!

*Time: 6:00pm-9:00pm, Instructor: Sarah Sutherland*

*Fee: \$30 Member, \$35 Non-Member*

### Core Of Knowledge Areas:

*(HSN) Health, Safety and Nutrition, (CD) Child Development,*

*(CU) Curriculum, (P) Professionalism,*

*(CO) Community, (SN) Special Needs*