

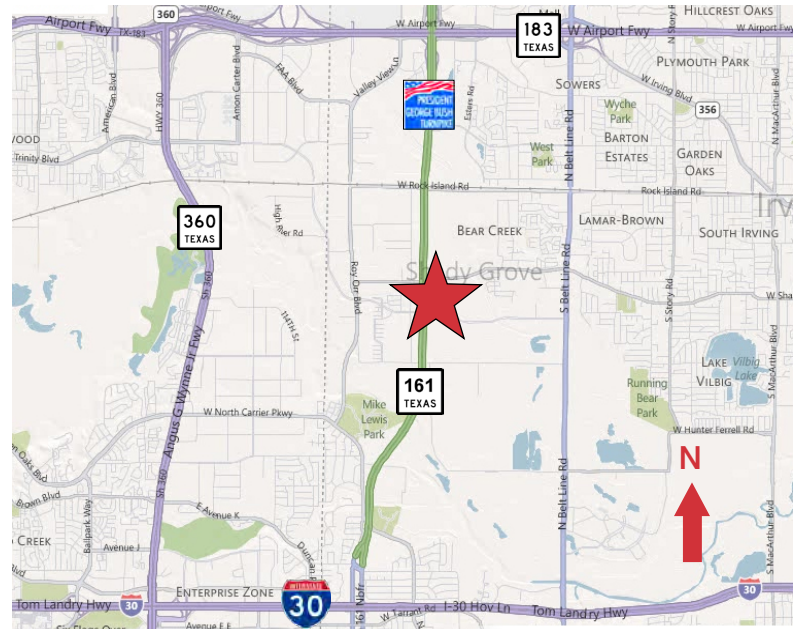


## Trinity 161 Trade Center

3100 State Highway 161  
Grand Prairie, Texas 75050

### Property Features

- Rear Load
- Divisible to 21,000 SF
- Build-To-Suit Office
- ± 28' Clear Height
- 79 Dock High Doors
- Build-To-Suit Ramps
- 52' x 50' Column Spacing
- ± 60' Staging Bay
- ± 210' Building Depth
- ESFR Sprinkler System
- ± 390 Car Parks
- Highway Frontage
- Easy Access to I-30 & Highway 183



**Michael Stanzel, SIOR**

214 256 7122  
mstanzel@robertlynn.com

**Patrick Embry**

214 256 7137  
pembry@robertlynn.com

**John Leinbaugh**

214 256 7167  
jleinbaugh@robertlynn.com



THE INFORMATION CONTAINED HEREIN HAS BEEN GIVEN TO US BY THE OWNER OF THE PROPERTY OR OTHER SOURCES WE DEEM RELIABLE. WE HAVE NO REASON TO DOUBT ITS ACCURACY, BUT WE DO NOT GUARANTEE IT. ALL INFORMATION SHOULD BE VERIFIED PRIOR TO PURCHASE OR LEASE.

4851 LBJ Freeway 10<sup>th</sup> Floor  
Dallas TX 75244  
214 256 7100  
[nairl.com](http://nairl.com)



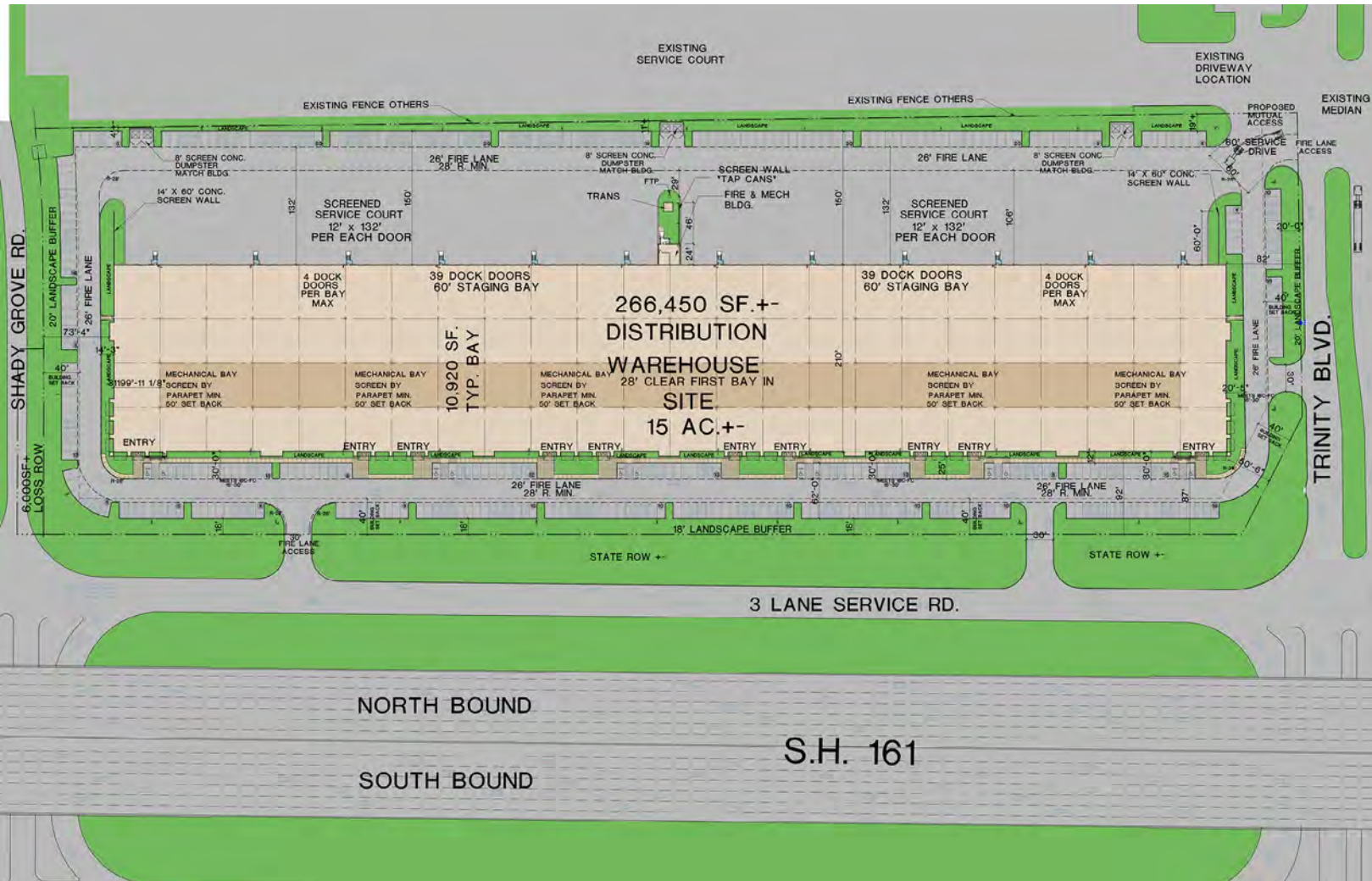
For Lease

266,450 SF

# Trinity 161 Trade Center

3100 State Highway 161

Grand Prairie, Texas 75050



Co-Developer:



Co-Developer:



SCR-Development

**NAI** Robert Lynn

4851 LBJ Freeway 10<sup>th</sup> Floor

Dallas TX 75244

214 256 7100

[nairl.com](http://nairl.com)