

# UNDERSTANDING IOWA'S INDIVIDUAL ACA PREMIUM INCREASES

## ACA PLAN MEMBERS CONTINUE TO REQUIRE MORE SERVICES YEAR OVER YEAR:



200%

Increase in overall cost of care for conditions greater than \$100,000.

The number of members with cost of care exceeding \$100,000 **doubled** from the prior year.



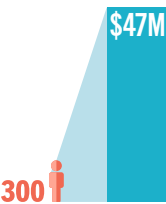
2X

Members who enroll through Special Enrollment Periods **cost nearly double** the amount of other members, and often **cancel coverage** after receiving services.



100%

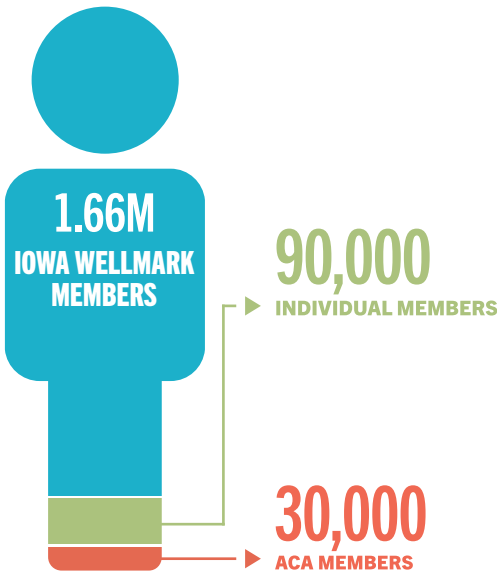
Increase in costs for **specialty drugs** to treat chronic and complex medical conditions.



300

Members drove **25% of the costs** in this population equaling **\$47 million**.

## WELLMARK INDIVIDUAL ACA MEMBERS COMPRISE LESS THAN TWO PERCENT OF WELLMARK'S TOTAL BUSINESS IN IOWA



## IN 2015: FOR EVERY \$1.00 IN PREMIUM PAID BY MEMBERS, WELLMARK SPENT \$1.27 TO PAY FOR THE COST OF SERVICES

	2015 Projected	2015 Actual
Health Claims	.85	1.15
Government Fees	.03	.02
Administrative Expenses	.12	.10
Total	\$1.00	\$ 1.27

## WHAT WE'RE DOING ABOUT IT

- Establishing **new networks** with provider partners to deliver care differently and more efficiently.
- Offering **simplified plan designs** to make costs more transparent and predictable for members.
- Improving the shopping experience** for our individual members for plans both on and off the public exchange.

