

LUMBER YARD AUCTION

27295 METCALF RD., LOUISBURG, KS

DIRECTIONS: Take 169 Hwy. to 68 Hwy. go East on 68 Hwy. approx. 9 miles to Metcalf Rd. then North on Metcalf 1 mile.
Or take 69 Hwy. to 68 Hwy./Louisburg Exit, go East approx. 1 mile to Metcalf Rd. then North on Metcalf 1 mile. (follow signs)

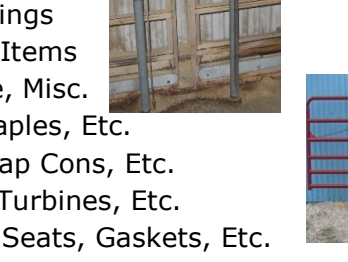
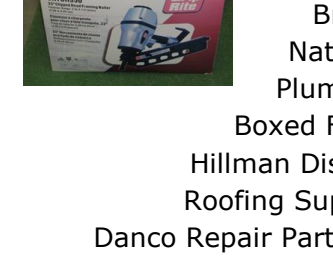
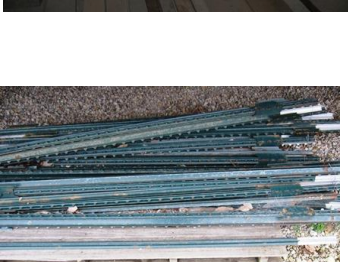
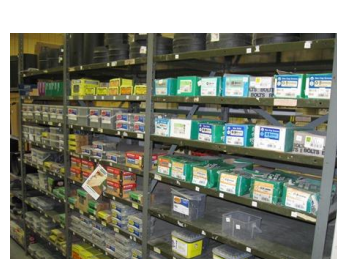
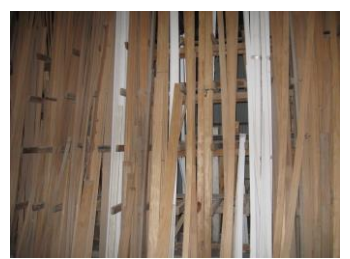
SAT., NOVEMBER 7, 2015--10:00AM

MOSSMAN LUMBER

ATTENTION: With Mossman Lumber changing the focus of their business to Commercial, we are selling excess inventory, stock & fixtures.

CONSTRUCTION MATERIAL

- Cedar
- Screen
- T Posts
- Nail Bin
- Shutters
- Panel Saw
- Door Locks
- Doors And Windows
- Assorted Hand Tools
- Jobsite Document Holders
- Compositional Decking
- Deck Spindles
- Paint Drywall Supplies
- Welded Wire Fencing
- Trim: Pine, Oak, And Poplar
- Professional Glass Cutter
- Screen Repair Center
- Paint Shaker 1-5 Gallon
- Paint Shaker 1 Gallon
- Paint Color Dispenser
- True Value Signs
- True Value Paint Displays
- Many Misc. Signs
- Lozier Shelving
- Misc. Shelving
- Sink And Cabinet
- Garden Tools
- Garden Supplies
- Router Bit Display And Bits
- Nail Guns And Power Tools
- Electrical Wire And Supplies
- Dremel Tool Display And Bits
- Automatic Livestock Waterers
- Key Cutting Machine With Keys
- Farmaster Gates-2" Tubular Steel
- Fencing Supplies: Wire, Tools, Etc.
- Spring Display With Assorted Springs
- John Deere Restored 60" Mower Deck
- Brass Fitting Display With Brass Fittings
- National Steel And Stanley Hardware Items
- Plumbing: PVC, Galvanized, Shark Bite, Misc.
- Boxed Fasteners, Nails, Screws, Bolts, Staples, Etc.
- Hillman Display With Nuts, Bolts, Washers, Tap Cons, Etc.
- Roofing Supplies: Vents, Roof Edge, Valleys, Turbines, Etc.
- Danco Repair Parts Cabinet With O Rings, Washers, Seats, Gaskets, Etc.
- Simpson Strong Tie Products: Joist Hangers, Post Base, Raft Ties, Mending Plates, Etc.



Dennis Wendt
913-285-0076
913-898-3337

Bill McNatt
913-849-3519

Rick James
913-594-2980

View online @
www.wendtauction.com



TERMS OF AUCTION: Cash, check or credit card w/proper ID. Statements made day of auction take precedence over written materials. All items sell "as-is", where-is & without warranty expressed or implied. Owners or auction company not responsible for accidents, theft or loss of sale items.