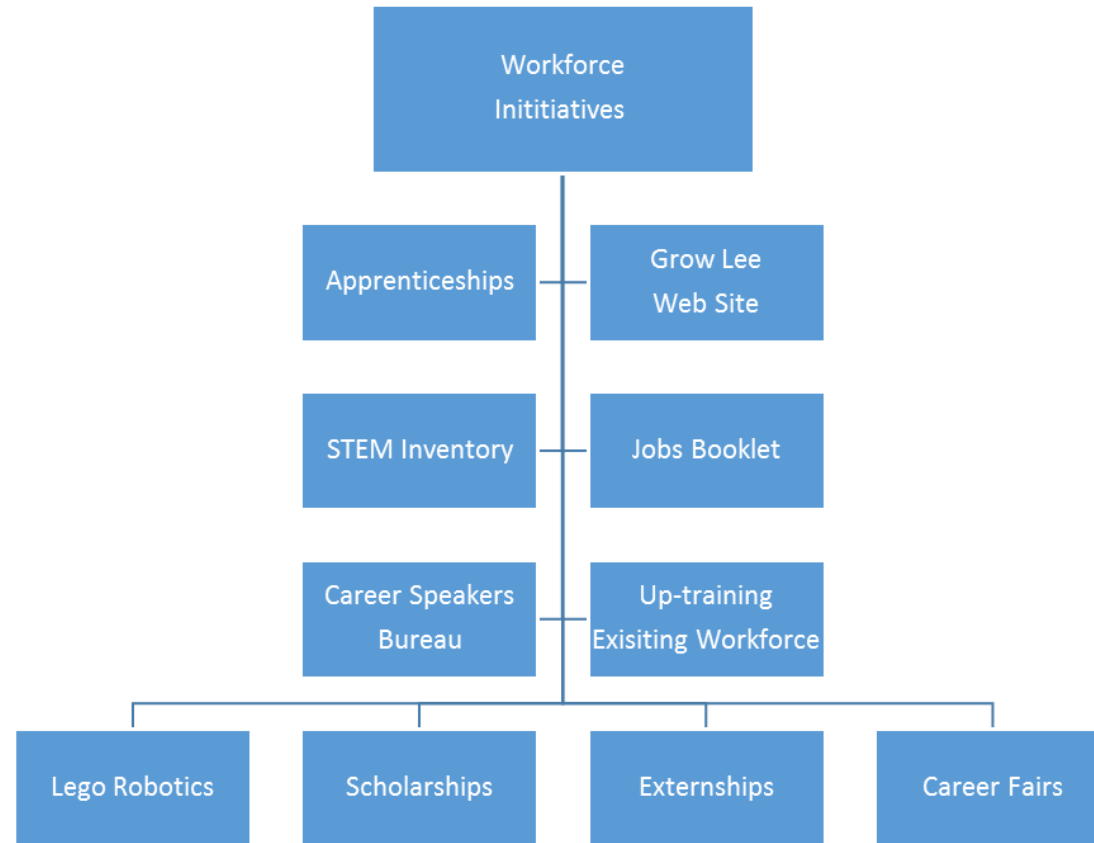


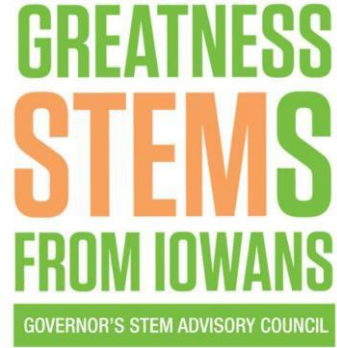


Lee County
ECONOMIC
DEVELOPMENT
GROUP

GR  **W** **Lee**

GR^{OW} Lee





2015 Lee County Real World Externships

Externship Descriptions and Quotes



Eric Myers

Axalta Coating Systems **Fort Madison, IA**



Axalta is supplied by two water wells and also runs off two booster pumps. Eric's job was to calculate whether the booster pumps could provide the right amount of pressure to deliver water to where it is needed throughout the plant, should the wells fail.

His job required a significant amount of critical thinking in the areas of math and physics to determine an answer.



"....probably the biggest thing that I have seen this week in regards to the use of math in the business world is the ability of the people and engineers here to logically work through a problem. This is, in my opinion, the most important skill to take away from math courses is the ability to reason and analyze any situation effectively."

Najam Uddin

Siemens Blade Manufacturing **Fort Madison, IA**

Najam's main task of his externship centered around lean manufacturing. One of his focuses was to determine how Siemens can eliminate waste throughout their manufacturing processes. The second focus was to utilize problem-solving in the manufacturing process in order to reduce the waste that he found.



"Problem-solving is one of the essential components in all workplaces. In classroom situations, we all deal with problem-solving, either content related or real life situations. In Siemens, I have observed the graphic organization of problem-solving strategies. It is displayed on almost every communication board."



GR4W Lee Lego Robotics Program



Students learn how to build a LEGO project with motors, gears, & sensors that actually move!



- 4 locations throughout Lee County
- Over 70 students participating
- 2nd—6th grade
- With volunteer teachers from 8 different Lee County companies

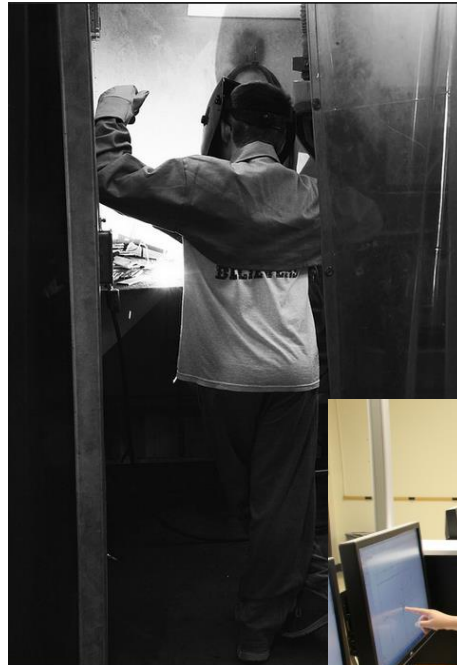


Building kits will teach computer programming, science, engineering and teamwork.

GRAD Lee Scholarships



19 Scholarships awarded to Lee County Students to attend one of Southeastern Community College's Kidtek U STEM Summer Camp.



Kidtek U is a summer program that provides week long STEM camps to students, grades 4th - 6th.

Camps Included:

- Heavy Metals – basic ARC and MIG Welding
- FUNgineering – basics of CAD software
- Tynkering Around – computer programing
- WoodworX – basics of construction trades

And More!

An **increase of 32** Lee County students participating from 2014

Career Fairs



Advanced Manufacturing Career Fairs

In conjunction with SCC, one on West Burlington Campus and one on Keokuk Campus

Totaling over 80 students in attendance meeting with a dozen Lee County employers



Up-Training Existing Workforce

Manufacturing 101 Course

Target Audience: underemployed and unemployed

- 13 Weeks, 2 nights a week
- Free to Lee County Residents
- On-site Childcare and Transportation provided

Areas of Study:

- Soft skills
- Industrial safety
- Basic mechanical knowledge
- Problem solving
- Basic reading, math, computer skills



Manufacturing Partners:

- Allied Blending & Ingredients
- Axalta Coatings
- Cryotech Deicing Technology
- Henniges Automotive
- Independent Can Company
- Siemens Wind Energy
- Pinnacle Foods