

WalStone™

From Fullerton Finish Systems, Inc.



Natural Beauty & Permanence.

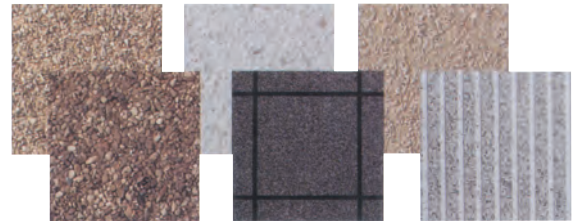
Factory-Finished Quality & Convenience.

WalStone™ panels give your building exteriors the distinctive flair of a natural stone finish, with consistency and fast, hassle-free installation.

The Fullerton Finish Systems Advantage...

- Low maintenance
- Design flexibility
- Consistent quality
- Lower structural cost
- Endless variety of custom looks

- Lightweight, durable, weather-resistant
- Easy and quick installation by your crew
- Quicker project completion
- No specialist subcontractors are required



Easy-Install Panels.

Choose from a wide range of stone types: crushed rock, granite, limestone, obsidian and more, with a variety of sizes, colors, textures and patterns. Each panel made to your specifications give you the perfect finish for any renovation or new construction.

The Fullerton Finish Systems Advantage... Design and Technical Support.

Mix and Match Fullerton Finish Systems products, colors and finishes to create an unlimited range of design effects. Our expert, experienced architectural and engineering staff can help you find the right product for your project, and provide creative ways to use them. Just give us a call.



The Quality Solution for New & Remodel Exterior Finishing

PO Box 609, Sand Springs, OK 74063 • Phone 918.246.9995 • Toll Free 866.915.9995 • Fax 918.246.9976

www.fullertonfinishsystems.com

WalStoneTM

From Fullerton Finish Systems, Inc.

Veneer Panel Specification

Part 1 - General

1.1 Description

A. Work described herein consists of furnishing factory fabricated panels with an exterior face of exposed aggregate finish applied with polymer epoxy resin on mineral fiber reinforced cement board as manufactured in Sand Springs, Oklahoma by Fullerton Finish Systems, Inc. - (918) 246-9995.

B. Manufacturer shall have been continuously engaged in the manufacture of exterior wall panels for 35 or more years.

1.2 Warranty

Manufacturer to warranty from date of purchase against defective materials or workmanship in fabrication for a period of five years.

Part 2 - Products

2.1 Description

A. Exposed aggregate finish shall be _____ (color) and _____ (size) per approved sample. All material shall be obtained from one source to match in color and size as nearly as possible.

B. Epoxy resin finish shall conform to requirements of MIL Spec. Mil-R-9300A and MIL-R-21931.

C. Mineral fiber reinforced cement board (M.F.B.) substrate shall meet the following minimum requirements:

Compressive Strength (lb/in²) **7000**

Flexural Strength (lb/in²) **2000**

Percent Moisture Movement

50% to 90% RH **0.06%**

Thermal "R" Value **0.15**

Burn Character

Flame/Smoke **0/5**

D. Product samples and shop drawings, if required, shall be submitted for approval before panel fabrication.

2.2 Performance

A. Panel substrate and aggregate finish shall withstand the following tests without noted change in appearance or material failure:

1,000 hours in Atlas Twinarc weatherometer.

14 cycles salt fog and thermal shock.

100 cycles -50 to +150 degrees F.

B. All testing shall have been performed by an independent testing facility.

Part 3 - Execution

3.1 Erection

A. Panels shall be erected plumb and true by qualified workman.

B. Panels shall be aligned and spaced as shown on manufacturer's shop drawings, if required.

C. Panels shall be handled and attached to building structure as per manufacturer's shop drawings, if required, installation procedure and/or architectural drawings.

D. All horizontal or vertical panel joints shall be filled with sealant over bond breaker tape.

E. Accessories

1. Sealant (Equal to Sashco Big Stretch or Dow Corning 790 or 795) shall be applied in accordance with sealant manufacturer's recommendations.

2. Bond breaker tape (slick faced polyvinyl chloride tape) minimum of 3/4" wide and equal to #50 by All Type. Tape shall be field applied to surface behind panel joint before panel erection.

3. Fasteners shall be low profile self-drilling stainless steel or zinc and clear chromate plated for rust resistance. Fasteners may be color coated to match exposed aggregate finish, if required.

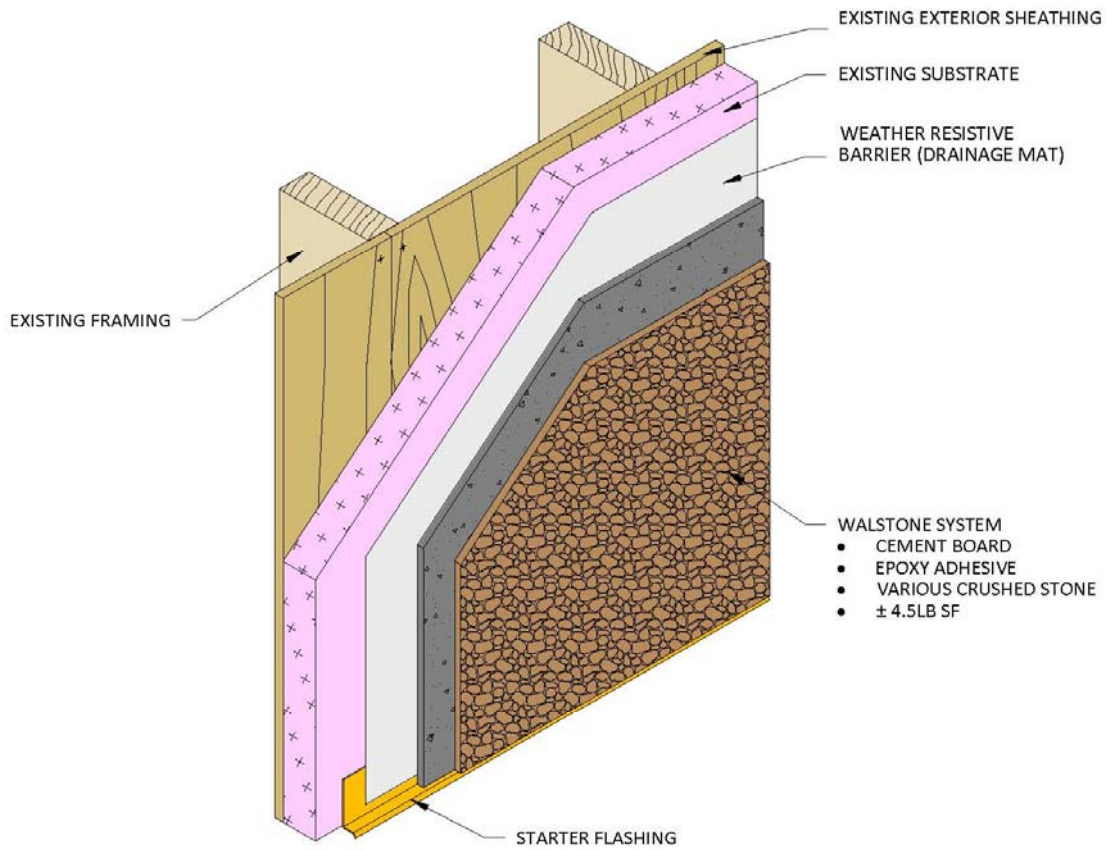
4. All the accessories shall be of size, shape and spacing as shown on manufacturer's shop drawings, if required, and/or listed in manufacturer's Installation Guide.



The Quality Solution for New & Remodel Exterior Finishing

PO Box 609, Sand Springs, OK 74063 • Phone 918.246.9995 • Toll Free 866.915.9995 • Fax 918.246.9976
www.fullertonfinishsystems.com

(Renovation)



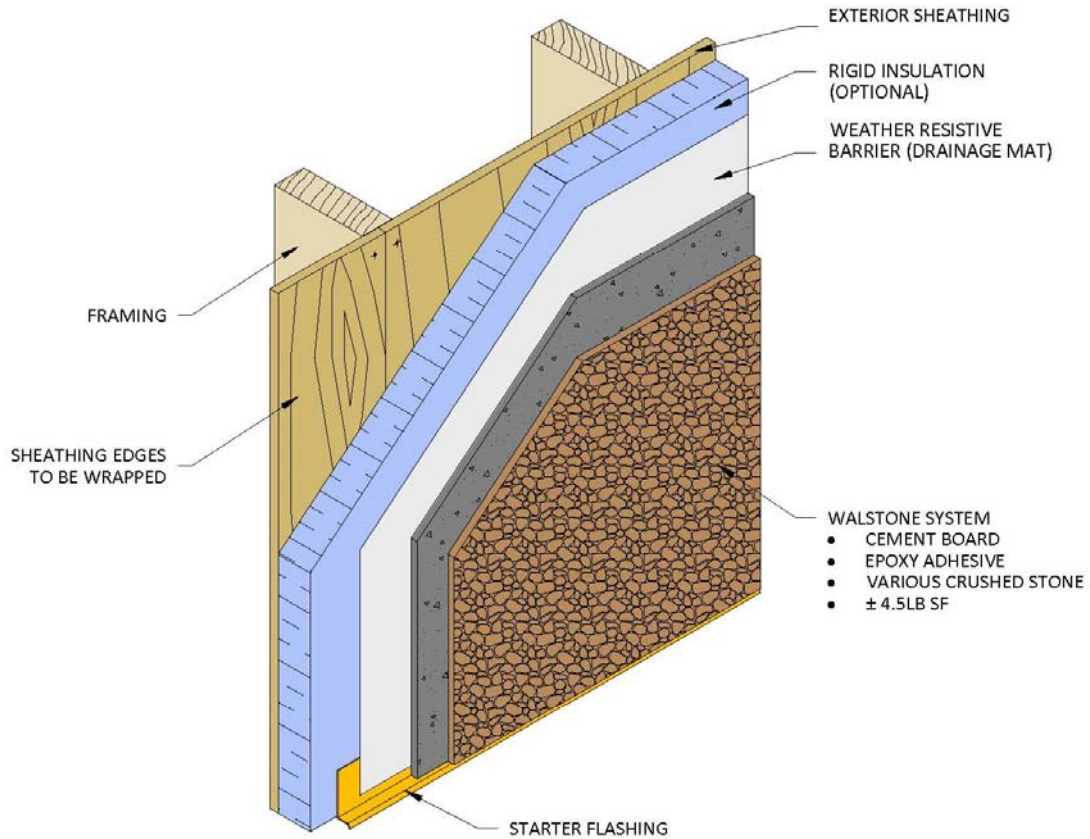
CASTWAL VENEER PANEL PROVIDED BY FFS

Walstone System

System Layout

This drawing represents a generic sample detail for illustration purposes only. Actual details utilized may vary due to specific project requirements.

(New Construction)



CASTWAL VENEER PANEL PROVIDED BY FFS

Walstone System - Insulated

System Layout

This drawing represents a generic sample detail for illustration purposes only. Actual details utilized may vary due to specific project requirements.



WALSTONE STANDARD COLOR CHART



AMBER LITE



BLACK OBSIDIAN



CIBOLA GOLD



DARK BALDWIN RED



DESERT TAN



EAU CLAIRE



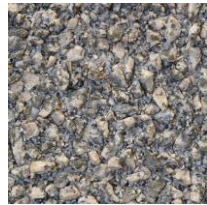
FLORENE GRAY



NUTMEG BROWN



SOONER AZTEC



TOWN MOUNTAIN



WYOMING WHITE



IVORY BOTTACINO



TEXAS BLUE



DELTA GRAY



DIABLO BLUE



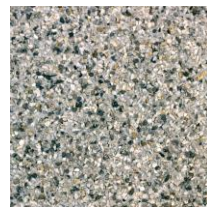
OZARK BROWN



SAN SABA



MT AIRY



FLINT



SILVERADO RIBWAL

