

Having trouble viewing this email? [Click here](#)



Like us on Facebook 

JUNE 2015

TABLE OF CONTENTS

[We Welcome
Summertime](#)

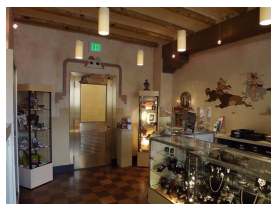
[Celebrate National
Pollinator Week : June
15-21, 2015](#)

[Summer Events](#)

[Reminder – Open
Saturday, June 20, 2015](#)

[News from the Interior
Museum](#)

RETAIL HOURS



Open on Saturday,
June 20, 2015
10:00 a.m.–4:00 p.m.

The Indian Craft Shop is
open Monday through
Friday from 8:30 a.m. to

WE WELCOME SUMMERTIME

June is here with warmer weather, summertime activities, graduations, weddings, berry picking, vacation time, FATHER'S DAY on June 21...and more. We look forward to your visit when you need that special gift or when you simply just need your "art break." The Indian Craft Shop is your local art oasis that is also a touchable museum – a place to enjoy, learn about and simply absorb the spirit of American Indian art today.

This month we bring a special highlight to pollinators in the arts (more information below). Whether you visit in person or [visit online](#), we wish all of you enjoyable ways to stay cool and embrace the summer season.

JOIN US AS WE HONOR POLLINATORS AND CELEBRATE NATIONAL POLLINATOR WEEK

JUNE 15-21, 2015

20% OFF ALL ARTS WITH POLLINATORS!

The Indian Craft Shop will honor National Pollinator Week by highlighting displays of American Indian arts including jewelry, pottery, basketry, beadwork and more, that depict pollinators and/or the plants they pollinate. During National Pollinator Week, June 15–21st, enjoy a 20% discount on any craft or jewelry item that depicts a pollinator or plant that relies on pollination*. Visit us in the Shop or on our [online store](#).

*Bronzes, books, publications, select sculpture and certain consignment items are excluded.

4:30p.m., and the third Saturday of the month from 10:00 a.m. to 4:00 p.m. The Shop is closed on federal holidays.

VISITING US

A photo ID is needed for entrance to the building. During weekdays, visitors may use either the C Street or E Street entrances (E Street is closer for Metro riders). Handicap access ramps are available at both entrances. During Saturday hours, visitors must use the C Street entrance.

Public Transportation

Farragut West (Blue, Orange, and Silver Line) and Farragut North (Red Line) are the closest metro stops. It is a six-block walk, or you can ride an 80 or S1 bus to 19th and C streets. There is metered parking on the street and several parking lots within a few blocks.

CONTACT US

(202) 208-4056

[E-mail](#)

[Website](#)

SOCIAL MEDIA



JOIN OUR LIST

[Join Our Mailing List!](#)

SAVE THIS NEWSLETTER

This newsletter is available as a [downloadable PDF](#).

We have really enjoyed pulling together arts representing some of the many pollinators and the plants they pollinate as we recognize National Pollinator Week, June 15 – 21, 2015.



Hummingbird pendants by Gary Custer (Navajo), Bee 'fetish carvings' by Clissa Martin (Zuni), and Butterfly Maiden by Claudia Peina (Zuni)



Hummingbirds carved from antler by Estevan Najera (Zuni), Redware Pot with Butterflies by Julie Guitierrez (Santa Clara), Reversible flower necklace by Charlene and Frank Reano (San Felipe and Santo Domingo)

American Indian artists honor elements of the living world, capturing their beauty and significance in many art forms. As National Pollinator Week is celebrated, take a moment to discover pollinators in American

Indian art. Butterflies, hummingbirds and bees are what you might think of as pollinators but did you also know that bats, squirrels, mice and beetles are important pollinators, too?



Butterflies need a place to land on the flowers that they visit, so they prefer broad, flat-faced flowers. Purple coneflowers provide food for butterflies and a variety of other insects.



Bees prefer flowers that they can walk on to sip nectar. Try planting goldenrod!



Hummingbirds pollinate plants with red, orange, and yellow flowers, and are only native to the New World. Try planting cardinal flowers!



To learn about pollinators, what you can do to help encourage their livelihood, and for other pollinator-related events in your region, visit www.fws.gov/pollinators and www.pollinator.org

At The Indian Craft Shop, we have arranged displays in recognition of pollinators and the many plants that rely on them; as usual, it has been an enjoyable activity! Stop in to learn more about this natural phenomenon that is so important for Mother Earth, and see the fruits of the blossoming talent of today's American Indian artists. [Learn more about Pollinators in American Indian Art](#) and be sure to check out our online selection of work on our [Highlights Page](#).

Join us as we celebrate pollinators and enjoy taking 20% off items that feature pollinators!

So take a look around at the Shop – or around our [online store](#) and see

what arts you can find that depict any of the many pollinators in our world... or arts that depict a plant that relies on pollinators... OR arts that are made with materials from plants that rely on pollinators. You can then receive 20% off these items during National Pollinator Week, June 15th – 21st, 2015.

We have also made it easy for you if you are shopping online – we've included most (if not all!) of the arts we have available on our online store that would be included in this special offering of 20% off on our special [Highlight on Pollinators in the Arts webstore page](#).

We encourage you to learn more about pollinators and get involved in your local communities with the many activities that are happening across the nation...and perhaps in your own backyard with some new plantings – milkweed, for instance, is so necessary for hosting the Monarch butterfly during its migration.

The following are links to learn more about pollinators, National Pollinator Week and more:

[Learn how to attract Pollinators to your garden](#)

[Interesting Facts about Pollinators](#)

[Learn about native plants for your area](#) and download a free eco-regional planting guide

[Learn how the National Pollinator Garden Network Launches Million Pollinator Garden Challenge](#)

"Pollinators are responsible for one out of three bites of food we take each day and yet pollinators are at a critical point in their own survival. Many reasons contribute to their recent decline – we know for certain, however, that more nectar and pollen sources provided by more flowering plants and trees will help improve their health and numbers. Increasing the number of pollinator-friendly gardens and landscapes will help revive the health of bees, butterflies, birds, bats and other pollinators across the country." From the [National Pollinator Garden Network](#)

SUMMER EVENTS – MARK YOUR CALENDARS NOW!

JUNE 15–21, 2015

Highlighting Pollinators Depicted in American Indian Art in recognition of National Pollinator Week (June 15–21, 2015)

20% Off Arts with Pollinators

JULY 13–24, 2015

Summer Sale

REMINDER – OPEN SATURDAY, JUNE 20th, 2015

The Indian Craft Shop is open the third Saturday of each month. We look forward to seeing you on Saturday, June 20th, from 10 a.m. – 4 p.m.

Thank you for your continued support of the arts –
enriching our lives, enriching yours.

NEWS FROM THE INTERIOR MUSEUM



DOI Pop! On Air, On Screen & In Print explores the intersection of the Department of the Interior with popular culture, highlighting classic examples from the early 1900s to the present from across its bureaus. Visitors will see how the Department's people and places have influenced American identity and figured into television shows, feature films and bestselling publications. From silent films and animated cartoons to blockbuster hits and novels, visitors will discover just how often America's public lands, wildlife refuges and national parks—and even the headquarters building in Washington, DC—have been cast in memorable supporting roles. With historical artifacts and iconic imagery, the exhibition also illustrates how the Department itself has enlisted icons of pop culture for help in publicizing its missions over the years.

INTERIOR MUSEUM PROGRAMS

Rock Creek Park: The Preservation of an Urban National Park
Wednesday, July 22, 1:15 p.m. – 2:15 p.m., Rachel Carson Room

Rock Creek Park, established in 1890, is celebrating its 125th Anniversary in 2015. The struggle and eventual success in establishing this naturalistic oasis within the Nation's capital, one of the earliest federal urban parks, is a testament to the vision of park planners and politicians at the end of the 19th century. The efforts of park planners to protect the Rock Creek Valley and Rock Creek Park for the enjoyment of all visitors continues today. This presentation provides an introduction to the early planning efforts for Rock Creek Park and the evolution of its development in protecting the natural environment in an urban park setting.

Special Assistance – For those in need of special assistance (such as an interpreter for the hearing impaired) or inquiries regarding the accessible entrance, please notify museum staff at (202) 208-4743 in advance of the program. Special needs will be accommodated whenever possible.

Building Access – All adults must present a photo ID to enter the building. All visitors will be subject to security screenings, including bag and parcel checks.

LOCATION – The Rachel Carson Room is located next to the basement cafeteria of the Stewart Lee Udall Department of the Interior Building.

U.S. Department of the Interior
1849 C Street, NW Washington, DC 20240
For more information call Diana Ziegler (202) 208-4743
Diana_Ziegler@ios.doi.gov

The Indian Craft Shop | Department of the Interior | 1849 C Street, NW Washington, DC 20240
www.indiancraftshop.com | 202.208.4056

[Forward this email](#)



This email was sent to rohrk@guestservices.com by indiancraftshop@guestservices.com |
[Update Profile/Email Address](#) | Rapid removal with [SafeUnsubscribe™](#) | [Privacy Policy](#).



Try it FREE today.

Guest Services, Inc | 3055 Prosperity Avenue | Fairfax | VA | 22031