

SBPSG

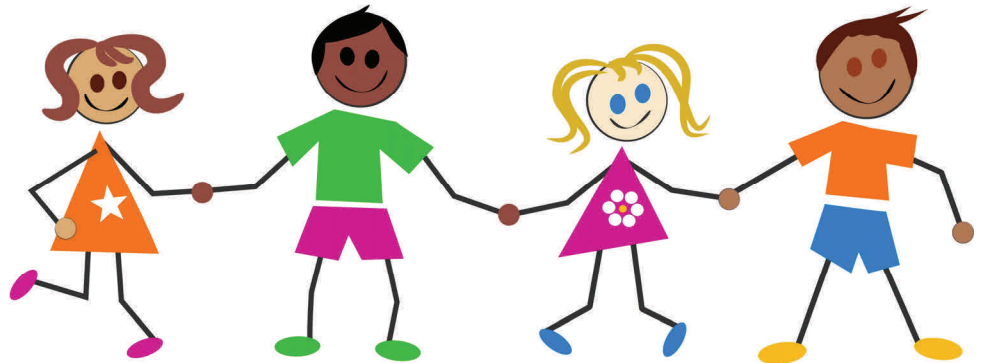
*Providers helping one another to be a strong
voice in the Early Childhood Field*

Seaford Bridgeville Provider Support Group

Date: 07/25/2015

Time: 10:15—12:15

**Seaford Library
600 N. Market Street
Seaford DE 19973**



For information contact:
Marlette Lofland
302-628-1521

*Are you tired of feeling alone? Do you
want to talk with other child care
providers in your area? Then come to
our child care provider support group!*



**Seaford
Bridgeville
Provider
Support
Group**

**First 20 people will
receive a door prize!**