



GWINNETT COUNTY
DEPARTMENT OF FIRE AND EMERGENCY
SERVICES AND
Fire Station #4 - Proudly Serving Peachtree
Corners

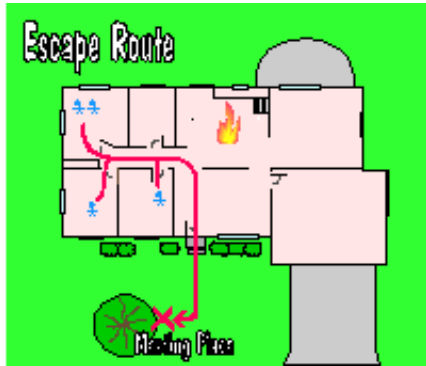
“Change Your Clock Change Your Smoke Alarm Battery”



For a number of years, the fire service in the U.S. has taken part in a national fire safety campaign to promote working smoke alarms in single and multi-family dwellings. The recent time change serves as a good reminder to also change the battery in your smoke alarms. A smoke alarm is the first line of defense when it comes to surviving a home fire. Smoke alarms are designed to give added time to escape when a fire breaks out.

Every home should be equipped with working smoke alarms on each level, in the hallway outside the sleeping area and in each of the bedrooms. The more smoke alarms you have, the earlier you will know there is a fire. Never ignore the noise of the smoke alarm. A constant loud “beeping” sound from the alarm is an indication of smoke or fire in the home. Follow your family’s home fire escape plan and get everyone outside safe. An intermittent “chirp” from the smoke alarm is an indication that the battery is going dead and needs to be changed. Many people take the battery out of the smoke alarm and forget to replace it. Doing so will leave your home and family unprotected from the hazards of a residential fire.

A smoke alarm may be battery powered, hardwired or a combination of the two. Firefighters suggest installing smoke alarms that are hardwired with a battery backup. The alarm should also be interconnected so that when one smoke alarm sounds, they all sound. Newer smoke alarms may incorporate a long-life (10-year) battery. In either case, the idea is to have more than one working smoke alarm in the home. Be sure to test the alarm monthly and replace all smoke alarms after 10-years.



Another important fire safety tip is to develop a home fire escape plan. Be sure to have two ways out and keep exit pathways clear. Doors and windows should be secured from intrusion, but should be easy to open from the inside. Provide a collapsible fire escape ladder to escape from the second floor if traditional exits are blocked.



Keep a multi-purpose ABC dry-chemical portable fire extinguisher close at hand. A portable fire extinguisher can be used to extinguish a small fire that's contained to where it started. They may also be used to douse flames in order to escape a fire in the home. Keep your home and family safe from fire by looking for and eliminating home fire hazards that could cause a fire to start or that may intensify the flames.

For additional information on home fire safety or to schedule a fire safety presentation, please contact the Gwinnett Fire Community Risk Reduction Section at 678.518.4845 or e-mail fireprograms@gwinnettcountry.com. The department offers free home fire safety surveys and a smoke alarm checks as part of its community outreach programs. **PRACTICE FIRE SAFETY EVERY DAY!!!**



###