

Product Introduction of GT Works3 1.130 English

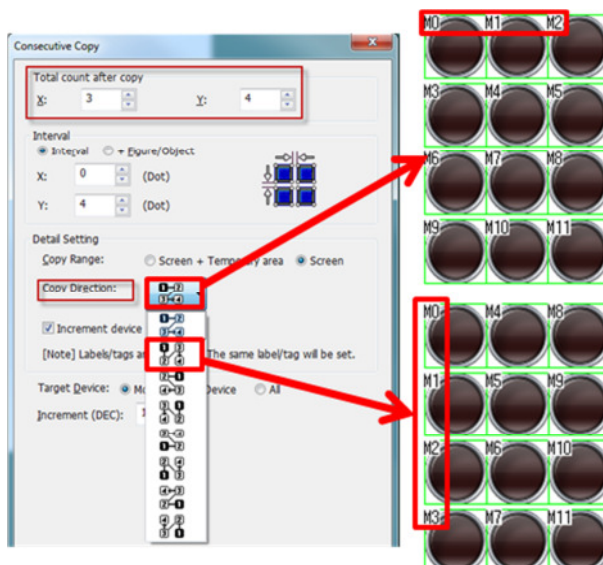
We are pleased to announce the release of GT Works3 1.130 in English for the Melsoft family. The new software package substitutes the existing version 1.128.

All My Mitsubishi users that registered their GT Works English version received a message informing them about this new release.

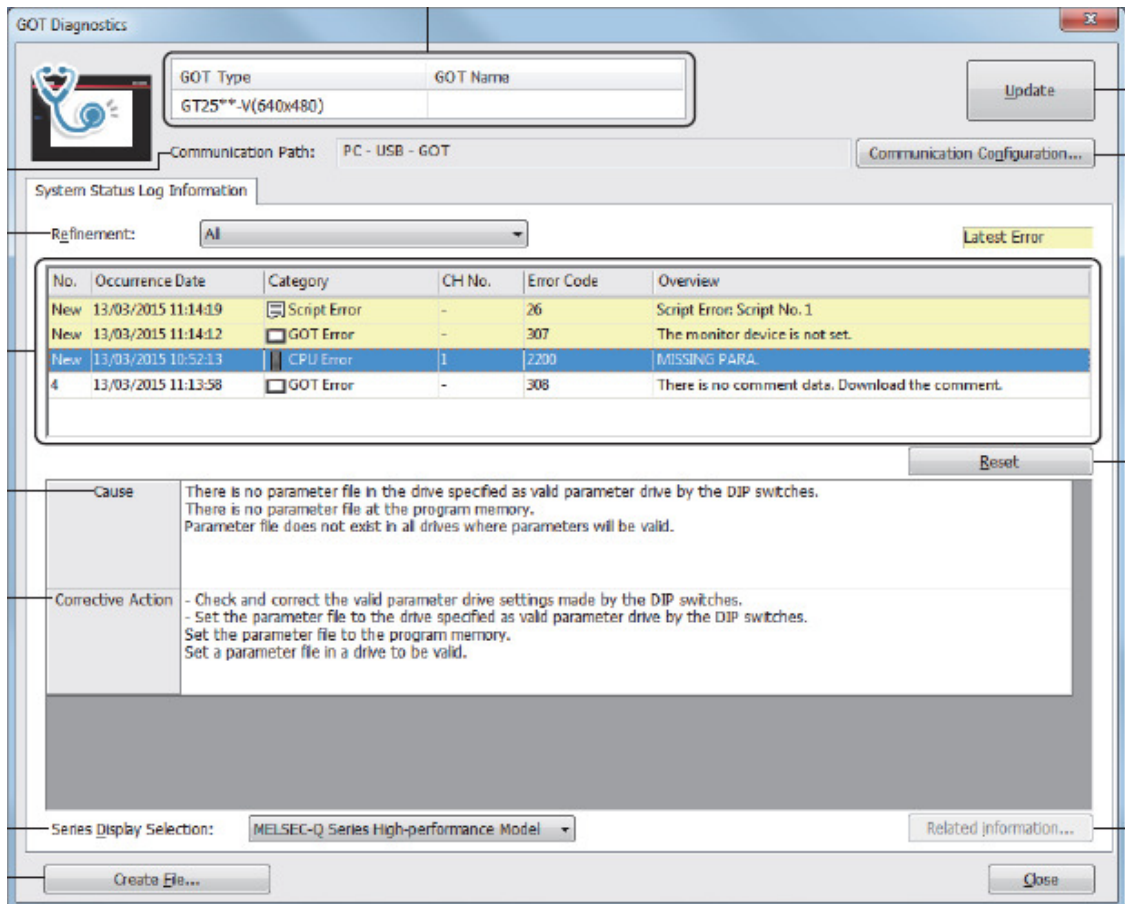
The software is available on the common platform.

Main new features of GT Works3 1.130:

- Support for copy direction function inside consecutive copy function. It is now possible to create multiple rows and columns of objects with a pre-defined copy direction:



- Newly implemented: GOT diagnostics, check the GOT system status log data and error information plus corrective actions suggestions:



- Automatic connection to FR-A800 and use of the PLC function now supported for GT21 + GS21
- Improved reporting function
 - Maximum number of settable report screens has been changed to 32
 - Maximum number of settable data collection times has been changed to 1000
 - Maximum number of settable repeat times has been changed to 999
 - Footer is supported (Not applicable to GT21)
 - Alarm print is supported (Not applicable to GT21)
 - Text print is supported (Not applicable to GT21)

What is GT Works3?

- GT Works3 is a HMI software suite to program GOT1000 (GT10/11/12/14/15/16) and GOT2000 (GT21/23/25/27 and GS21) terminals
- GT Works3 is delivered on 1 DVD

GT Works3 Software Suite consists of :

- GT Designer3 1000 (Configuration Environment for GOT1000)
- GT Designer3 2000 (Configuration Environment for GOT2000)
- GT Simulator3 (Debug and Simulation S/W)
- GT SOFTGOT1000 (PC Based HMI)
- GT SOFTGOT2000 (PC Based HMI)
- Data Transfer Utility (for transferring project data to GOTs without GT Designer installed)
- GT Converter2 (Conversion Utility)
- Additional Software Tools

Operation Environment :

- PC-AT compatible personal computer
- Microsoft Windows 2000, XP SP2 or later, Vista, Windows 7, Windows 8
- 1GB RAM or more recommended
- 1.5GB hard disk space or more recommended
- Resolution XGA (1024x768 dots) or more

Order information:

Article	No.	Description
GT Works3 V01-2L0C-E	234645	HMI Programming-S/W for GOT1000+SoftGOT1000;engl;DVD;2 PC´s
GT Works3 V01-5L0C-E	234646	HMI Programming-S/W for GOT1000+SoftGOT1000;engl;DVD;5 PC´s
GT Works3 V01-2L0C-E-UPGRADE	234647	HMI Programming-S/W for GOT1000+SoftGOT1000;engl;DVD;2 PC´s;Upgrade
GT Works3 V01-5L0C-E-UPGRADE	234648	HMI Programming-S/W for GOT1000+SoftGOT1000;engl;DVD;5 PC´s;Upgrade

We wish you much success with the new software.

Your Mitsubishi Team