

**ILLINOIS STATE BOARD OF EDUCATION**  
**District Detail Report**  
**January 6, 2016**  
**Exhibit G**

Based upon the design of the GSA Formula, school districts with lower amounts of local wealth and higher concentrations of low-income students are to receive a greater amount of GSA on a per pupil basis as compared to school districts with higher amounts of local wealth and lower concentrations of low-income students. Due to the design, the GSA Formula is the most equitable funding mechanism in current statute and it measures a child's need based upon two distinct and separate measures. The Superintendent's Recommendation follows the principle of equitably distributing resources benefitting 77% of the students in school districts with the least amount of local wealth and the highest concentrations of low-income students in alignment with the design of the General State Aid Formula.

	Range of Gain/ (Loss)	\$ Per Pupil	% of Operating Revenue
<b>Maxium Loss</b>	<b>\$</b>	<b>(106)</b>	<b>-0.9%</b>
<b>Maxium Gain</b>	<b>\$</b>	<b>436</b>	<b>5.2%</b>
<b>Median</b>	<b>\$</b>	<b>270</b>	<b>2.1%</b>

District Name	County	Organization Type	FY 16 Actual Receipts * @ \$6,119 FLEVEL	FY 16 Simulated Receipts @ \$6,327 FLEVEL	Gain / Loss	Gain / Loss Per Student	Gain / Loss as % of Operating Revenue	Formula Type **	Low Income %	Maintenance of Effort ***
SAFE SCH-ADAMS/PIKE ROE	ADAMS	Regional	\$475,018	\$510,209	\$35,191	\$436	0.0%	Lab & Alternative	0.0%	\$0
PAYSON COMM UNIT SCHOOL DIST 1	ADAMS	Unit	\$1,633,689	\$1,773,035	\$139,345	\$298	3.7%	Foundation	42.5%	\$87,699
LIBERTY COMM UNIT SCHOOL DIST 2	ADAMS	Unit	\$1,970,620	\$2,147,668	\$177,048	\$304	3.7%	Foundation	29.8%	\$90,468
CAMP POINT C U SCHOOL DIST 3	ADAMS	Unit	\$2,898,374	\$3,141,914	\$243,539	\$296	3.8%	Foundation	49.1%	\$152,319
COMMUNITY UNIT SCHOOL DIST 4	ADAMS	Unit	\$2,388,050	\$2,590,648	\$202,598	\$303	4.0%	Foundation	35.9%	\$113,547
QUINCY SCHOOL DISTRICT 172	ADAMS	Unit	\$12,982,634	\$14,397,021	\$1,414,387	\$236	2.4%	Foundation	62.4%	\$1,218,553
CAIRO UNIT SCHOOL DISTRICT 1	ALEXANDER	Unit	\$3,184,496	\$3,299,271	\$114,775	\$271	1.9%	Foundation	100.0%	\$103,392
EGYPTIAN COMM UNIT SCH DIST 5	ALEXANDER	Unit	\$2,680,729	\$2,810,244	\$129,515	\$294	2.7%	Foundation	83.0%	\$70,159
MULBERRY GROVE C U SCH DIST 1	BOND	Unit	\$1,730,462	\$1,844,689	\$114,227	\$293	3.3%	Foundation	54.7%	\$69,236
BOND CO C U SCHOOL DIST 2	BOND	Unit	\$5,931,821	\$6,446,930	\$515,109	\$296	3.6%	Foundation	49.7%	\$337,872
BELVIDERE C U SCH DIST 100	BOONE	Unit	\$28,351,465	\$30,768,086	\$2,416,621	\$299	2.9%	Foundation	51.4%	\$1,165,011
NORTH BOONE C U SCH DIST 200	BOONE	Unit	\$5,867,571	\$6,334,610	\$467,039	\$296	2.8%	Foundation	44.8%	\$217,863
BROWN COUNTY C U SCH DIST 1	BROWN	Unit	\$2,075,909	\$2,272,113	\$196,203	\$295	3.1%	Foundation	45.5%	\$120,932
OHIO COMM CONS SCHOOL DIST 17	BUREAU	Elementary	\$94,452	\$92,418	(\$2,034)	(\$26)	-0.1%	Alternate Method	65.0%	\$12,924
MALDEN COMM CONS SCH DIST 84	BUREAU	Elementary	\$91,522	\$103,295	\$11,773	\$163	1.1%	Foundation	47.5%	\$9,231
CHERRY SCHOOL DIST 92	BUREAU	Elementary	\$112,127	\$124,717	\$12,590	\$240	2.2%	Foundation	43.2%	\$6,462
LADD ELEMENTARY 94	BUREAU	Elementary	\$426,800	\$476,700	\$49,900	\$238	2.7%	Foundation	34.9%	\$26,771
DALZELL SCHOOL DISTRICT 98	BUREAU	Elementary	\$179,068	\$194,375	\$15,308	\$303	3.1%	Foundation	50.5%	\$7,385
SPRING VALLEY C C SCH DIST 99	BUREAU	Elementary	\$3,093,021	\$3,293,758	\$200,737	\$290	3.8%	Foundation	63.2%	\$99,700
DEPUÉ UNIT SCHOOL DIST 103	BUREAU	Unit	\$2,498,991	\$2,620,938	\$121,947	\$293	3.2%	Foundation	61.4%	\$72,929
PRINCETON ELEM SCHOOL DIST 115	BUREAU	Elementary	\$1,328,501	\$1,498,219	\$169,718	\$163	2.0%	Foundation	53.5%	\$194,784
LA MOILLE C U SCHOOL DIST 303	BUREAU	Unit	\$438,610	\$491,385	\$52,775	\$205	1.8%	Foundation	47.8%	\$51,696
BUREAU VALLEY CUSD 340	BUREAU	Unit	\$2,518,918	\$2,794,075	\$275,157	\$272	2.7%	Foundation	49.7%	\$207,708
PRINCETON HIGH SCH DIST 500	BUREAU	High School	\$359,177	\$353,291	(\$5,886)	(\$12)	-0.1%	Alternate Method	37.1%	\$77,544
HALL HIGH SCH DIST 502	BUREAU	High School	\$981,224	\$1,085,839	\$104,614	\$290	2.5%	Foundation	54.1%	\$67,390
OHIO COMMUNITY H S DIST 505	BUREAU	High School	\$18,753	\$15,330	(\$3,423)	(\$99)	-0.3%	Flat Grant	38.7%	\$9,231
CALHOUN COMM UNIT SCH DIST 40	CALHOUN	Unit	\$1,491,278	\$1,616,401	\$125,122	\$300	3.5%	Foundation	50.6%	\$84,929
BRUSSELS COMM UNIT SCHOOL DIST 42	CALHOUN	Unit	\$263,137	\$293,321	\$30,184	\$226	1.9%	Foundation	42.3%	\$26,771
EASTLAND COMM UNIT SCH DIST 308	CARROLL	Unit	\$480,148	\$445,595	(\$34,553)	(\$58)	-0.5%	Alternate Method	45.2%	\$75,698
WEST CARROLL	CARROLL	Unit	\$3,449,653	\$3,769,202	\$319,548	\$296	2.8%	Foundation	58.9%	\$202,169
CHADWICK-MILLEDGEVILLE CUSD 399	CARROLL	Unit	\$1,244,871	\$1,379,216	\$134,345	\$284	2.8%	Foundation	40.9%	\$58,158
BEARDSTOWN C U SCH DIST 15	CASS	Unit	\$7,604,982	\$8,009,127	\$404,145	\$291	3.3%	Foundation	61.2%	\$249,250
VIRGINIA C U SCH DIST 64	CASS	Unit	\$644,611	\$715,334	\$70,723	\$270	2.7%	Foundation	49.5%	\$55,389
A C CENTRAL CUSD 262	CASS	Unit	\$1,204,048	\$1,331,425	\$127,376	\$302	3.3%	Foundation	38.3%	\$72,005
SAFE SCH-CHAMPAIGN/FORD ROE	CHAMPAIGN	Regional	\$557,192	\$598,471	\$41,279	\$436	0.0%	Lab & Alternative	0.0%	\$0
FISHER C U SCHOOL DISTRICT 1	CHAMPAIGN	Unit	\$1,166,844	\$1,303,186	\$136,342	\$235	2.7%	Foundation	31.4%	\$72,005
MAHOMET-SEYMOUR C U SCH DIST 3	CHAMPAIGN	Unit	\$8,743,619	\$9,611,491	\$867,872	\$305	3.7%	Foundation	22.9%	\$293,561
CHAMPAIGN COMM UNIT SCH DIST 4	CHAMPAIGN	Unit	\$10,534,421	\$10,211,249	(\$323,173)	(\$37)	-0.3%	Alternate Method	59.6%	\$1,261,018
TOLONO C U SCHOOL DIST 7	CHAMPAIGN	Unit	\$4,996,411	\$5,484,403	\$487,992	\$302	3.4%	Foundation	29.4%	\$202,169
HERITAGE COMM UNIT SCH DIST 8	CHAMPAIGN	Unit	\$486,369	\$556,648	\$70,279	\$154	1.7%	Foundation	42.2%	\$54,466
URBANA SCHOOL DIST 116	CHAMPAIGN	Unit	\$8,051,580	\$8,891,051	\$839,472	\$224	1.4%	Foundation	73.0%	\$739,440
THOMASBORO C C SCHOOL DIST 130	CHAMPAIGN	Elementary	\$567,707	\$611,080	\$43,373	\$282	3.2%	Foundation	75.1%	\$24,002
RANTOUL CITY SCHOOL DIST 137	CHAMPAIGN	Elementary	\$9,885,416	\$10,301,633	\$416,217	\$276	4.5%	Foundation	88.7%	\$310,177
LUDLOW C C SCHOOL DIST 142	CHAMPAIGN	Elementary	\$394,789	\$418,422	\$23,633	\$284	2.2%	Foundation	100.0%	\$11,078

**ILLINOIS STATE BOARD OF EDUCATION**  
**District Detail Report**  
**January 6, 2016**  
**Exhibit G**

Based upon the design of the GSA Formula, school districts with lower amounts of local wealth and higher concentrations of low-income students are to receive a greater amount of GSA on a per pupil basis as compared to school districts with higher amounts of local wealth and lower concentrations of low-income students. Due to the design, the GSA Formula is the most equitable funding mechanism in current statute and it measures a child's need based upon two distinct and separate measures. The Superintendent's Recommendation follows the principle of equitably distributing resources benefitting 77% of the students in school districts with the least amount of local wealth and the highest concentrations of low-income students in alignment with the design of the General State Aid Formula.

Range of Gain/ (Loss)	\$ Per Pupil	% of Operating Revenue
<b>Maxium Loss</b>	<b>\$ (106)</b>	<b>-0.9%</b>
<b>Maxium Gain</b>	<b>\$ 436</b>	<b>5.2%</b>
<b>Median</b>	<b>\$ 270</b>	<b>2.1%</b>

District Name	County	Organization Type	FY 16 Actual Receipts * @ \$6,119 FLEVEL	FY 16 Simulated Receipts @ \$6,327 FLEVEL	Gain / Loss	Gain / Loss Per Student	Gain / Loss as % of Operating Revenue	Formula Type **	Low Income %	Maintenance of Effort ***
ST JOSEPH C C SCHOOL DIST 169	CHAMPAIGN	Elementary	\$2,311,473	\$2,568,587	\$257,114	\$308	4.3%	Foundation	17.2%	\$110,778
GIFFORD C C SCHOOL DIST 188	CHAMPAIGN	Elementary	\$176,669	\$204,243	\$27,574	\$144	1.9%	Foundation	35.1%	\$21,232
RANTOUL TOWNSHIP H S DIST 193	CHAMPAIGN	High School	\$3,111,200	\$3,308,636	\$197,435	\$287	2.2%	Foundation	75.7%	\$123,702
PRAIRIEVIEW-OGDEN CCSD 197	CHAMPAIGN	Elementary	\$141,533	\$124,653	(\$16,880)	(\$70)	-0.7%	Alternate Method	23.0%	\$14,770
ST JOSEPH OGDEN C H S DIST 305	CHAMPAIGN	High School	\$860,712	\$969,155	\$108,443	\$237	2.8%	Foundation	13.9%	\$25,848
UNIVERSITY OF ILLINOIS LAB SCHOOL	CHAMPAIGN	Labs	\$1,806,412	\$1,940,238	\$133,826	\$436	0.0%	Lab & Alternative	0.0%	\$0
MORRISONVILLE C U SCH DIST 1	CHRISTIAN	Unit	\$699,619	\$776,070	\$76,452	\$263	2.6%	Foundation	48.1%	\$62,774
TAYLORVILLE C U SCH DIST 3	CHRISTIAN	Unit	\$7,390,257	\$8,085,559	\$695,302	\$292	3.5%	Foundation	59.2%	\$438,495
EDINBURG C U SCH DIST 4	CHRISTIAN	Unit	\$527,307	\$588,309	\$61,002	\$228	2.4%	Foundation	38.6%	\$47,080
PANA COMM UNIT SCHOOL DIST 8	CHRISTIAN	Unit	\$5,634,792	\$5,994,853	\$360,061	\$290	3.1%	Foundation	69.1%	\$184,629
SOUTH FORK SCHOOL DISTRICT 14	CHRISTIAN	Unit	\$1,633,121	\$1,728,245	\$95,124	\$294	3.4%	Foundation	62.2%	\$72,929
MARSHALL C U SCHOOL DIST 2C	CLARK	Unit	\$5,020,826	\$5,398,585	\$377,759	\$297	3.9%	Foundation	44.8%	\$270,482
MARTINSVILLE C U SCH DIST 3C	CLARK	Unit	\$1,798,888	\$1,907,682	\$108,794	\$291	3.3%	Foundation	68.5%	\$84,929
CASEY-WESTFIELD C U SCH DIST 4C	CLARK	Unit	\$3,521,955	\$3,778,629	\$256,674	\$295	3.6%	Foundation	51.8%	\$169,859
CLAY CITY COMM UNIT DIST 10	CLAY	Unit	\$1,128,838	\$1,217,681	\$88,842	\$298	3.5%	Foundation	52.3%	\$48,004
NORTH CLAY C U SCHOOL DISTRICT 25	CLAY	Unit	\$2,890,704	\$3,070,929	\$180,224	\$294	3.5%	Foundation	65.2%	\$91,391
FLORA COMM UNIT SCH DIST 35	CLAY	Unit	\$5,405,689	\$5,755,194	\$349,505	\$290	3.4%	Foundation	59.7%	\$157,858
ALT SCH-CLINTON/MARION/WASHINGTON	CLINTON	Regional	\$325,102	\$349,187	\$24,085	\$436	0.0%	Lab & Alternative	0.0%	\$0
SAFE SCH-CLINTON/MARION/WASHINGTON	CLINTON	Regional	\$157,868	\$169,564	\$11,696	\$436	0.0%	Lab & Alternative	0.0%	\$0
CARLYLE C U SCHOOL DISTRICT 1	CLINTON	Unit	\$2,800,850	\$3,104,546	\$303,696	\$276	3.5%	Foundation	44.4%	\$195,707
WESCLIN C U SCHOOL DISTRICT 3	CLINTON	Unit	\$3,659,435	\$4,030,383	\$370,948	\$302	3.8%	Foundation	32.3%	\$218,786
BRESE SCHOOL DISTRICT 12	CLINTON	Elementary	\$947,230	\$1,062,651	\$115,421	\$205	3.3%	Foundation	38.5%	\$140,318
AVISTON SCHOOL DISTRICT 21	CLINTON	Elementary	\$1,042,210	\$1,153,929	\$111,719	\$310	5.2%	Foundation	12.8%	\$36,003
WILLOW GROVE SCHOOL DISTRICT 46	CLINTON	Elementary	\$761,797	\$809,569	\$47,772	\$292	3.7%	Foundation	53.5%	\$39,695
BARTELSON SCHOOL DISTRICT 57	CLINTON	Elementary	\$302,547	\$338,238	\$35,691	\$268	4.2%	Foundation	9.0%	\$18,463
GERMANTOWN SCHOOL DISTRICT 60	CLINTON	Elementary	\$610,538	\$679,435	\$68,897	\$297	4.8%	Foundation	18.8%	\$36,003
DAMIANSVILLE SCHOOL DISTRICT 62	CLINTON	Elementary	\$239,726	\$267,521	\$27,795	\$285	3.9%	Foundation	41.0%	\$10,155
ALBERS SCHOOL DISTRICT 63	CLINTON	Elementary	\$548,455	\$604,000	\$55,545	\$308	4.6%	Foundation	16.1%	\$21,232
CENTRAL COMMUNITY H S DIST 71	CLINTON	High School	\$343,944	\$340,635	(\$3,310)	(\$6)	-0.1%	Alternate Method	26.5%	\$62,774
ST ROSE SCHOOL DISTRICT 14-15	CLINTON	Elementary	\$300,034	\$336,602	\$36,569	\$243	3.1%	Foundation	17.1%	\$15,693
NORTH WAMAC SCHOOL DISTRICT 186	CLINTON	Elementary	\$817,737	\$855,058	\$37,321	\$279	3.1%	Foundation	83.6%	\$46,157
ALT SCH-CLK/CLS/CMBN/DGLAS/EDGR/M	COLES	Regional	\$435,080	\$467,312	\$32,232	\$436	0.0%	Lab & Alternative	0.0%	\$0
SAFE SCH-CLK/CLS/CMBN/DGLAS/EDGR/	COLES	Regional	\$377,175	\$405,118	\$27,943	\$436	0.0%	Lab & Alternative	0.0%	\$0
CHARLESTON C U SCHOOL DIST 1	COLES	Unit	\$6,542,177	\$7,239,793	\$697,616	\$275	2.7%	Foundation	48.3%	\$567,735
MATTOON C U SCHOOL DIST 2	COLES	Unit	\$11,520,051	\$12,447,931	\$927,880	\$289	2.9%	Foundation	62.9%	\$607,430
OAKLAND C U SCHOOL DIST 5	COLES	Unit	\$734,211	\$811,388	\$77,177	\$293	3.1%	Foundation	61.1%	\$59,081
SAFE SCH - NORTH COOK ISC 1	COOK	Regional	\$405,038	\$435,045	\$30,007	\$436	0.0%	Lab & Alternative	0.0%	\$0
PALATINE C C SCHOOL DIST 15	COOK	Elementary	\$11,062,731	\$10,469,869	(\$592,863)	(\$52)	-0.4%	Alternate Method	50.2%	\$1,345,947
WHEELING C C SCHOOL DIST 21	COOK	Elementary	\$8,783,073	\$8,684,012	(\$99,062)	(\$17)	-0.1%	Alternate Method	67.7%	\$709,900
PROSPECT HEIGHTS SCHOOL DIST 23	COOK	Elementary	\$1,078,067	\$987,617	(\$90,450)	(\$65)	-0.5%	Alternate Method	41.0%	\$185,552
ARLINGTON HEIGHTS SCH DIST 25	COOK	Elementary	\$2,948,680	\$2,575,823	(\$372,857)	(\$71)	-0.5%	Alternate Method	14.8%	\$767,135
RIVER TRAILS SCHOOL DIST 26	COOK	Elementary	\$1,002,610	\$914,180	(\$88,430)	(\$67)	-0.4%	Alternate Method	41.1%	\$190,168
NORTHBROOK ELEM SCHOOL DIST 27	COOK	Elementary	\$400,050	\$281,258	(\$118,791)	(\$105)	-0.5%	Flat Grant	8.8%	\$185,552
NORTHBROOK SCHOOL DIST 28	COOK	Elementary	\$560,458	\$394,654	(\$165,804)	(\$105)	-0.5%	Flat Grant	9.2%	\$224,325

# ILLINOIS STATE BOARD OF EDUCATION

## District Detail Report

### January 6, 2016

### Exhibit G

Based upon the design of the GSA Formula, school districts with lower amounts of local wealth and higher concentrations of low-income students are to receive a greater amount of GSA on a per pupil basis as compared to school districts with higher amounts of local wealth and lower concentrations of low-income students. Due to the design, the GSA Formula is the most equitable funding mechanism in current statute and it measures a child's need based upon two distinct and separate measures. The Superintendent's Recommendation follows the principle of equitably distributing resources benefitting 77% of the students in school districts with the least amount of local wealth and the highest concentrations of low-income students in alignment with the design of the General State Aid Formula.

	Range of Gain/ (Loss)	\$ Per Pupil	% of Operating Revenue
Maxium Loss	\$	(106)	-0.9%
Maxium Gain	\$	436	5.2%
Median	\$	270	2.1%

District Name	County	Organization Type	FY 16 Actual Receipts * @ \$6,119 FLEVEL	FY 16 Simulated Receipts @ \$6,327 FLEVEL	Gain / Loss	Gain / Loss Per Student	Gain / Loss as % of Operating Revenue	Formula Type **	Low Income %	Maintenance of Effort ***
SUNSET RIDGE SCHOOL DIST 29	COOK	Elementary	\$164,776	\$115,281	(\$49,495)	(\$105)	-0.4%	Flat Grant	7.5%	\$78,467
NORTHBROOK/GLENVIEW SCH DIST 30	COOK	Elementary	\$387,149	\$274,351	(\$112,798)	(\$105)	-0.5%	Flat Grant	10.6%	\$154,165
WEST NORTHFIELD SCHOOL DIST 31	COOK	Elementary	\$489,430	\$401,355	(\$88,075)	(\$101)	-0.5%	Flat Grant	36.7%	\$118,163
GLENVIEW C C SCHOOL DIST 34	COOK	Elementary	\$2,646,442	\$2,311,852	(\$334,590)	(\$74)	-0.5%	Alternate Method	26.2%	\$610,200
GLENCOE SCHOOL DIST 35	COOK	Elementary	\$406,577	\$279,737	(\$126,840)	(\$104)	-0.5%	Flat Grant	3.2%	\$155,089
WINNETKA SCHOOL DIST 36	COOK	Elementary	\$554,270	\$381,698	(\$172,572)	(\$103)	-0.5%	Flat Grant	2.7%	\$349,872
AVOCA SCHOOL DIST 37	COOK	Elementary	\$252,574	\$179,910	(\$72,663)	(\$106)	-0.5%	Flat Grant	12.4%	\$64,620
KENILWORTH SCHOOL DIST 38	COOK	Elementary	\$163,015	\$113,179	(\$49,836)	(\$100)	-0.4%	Flat Grant	2.5%	\$59,081
WILMETTE SCHOOL DIST 39	COOK	Elementary	\$1,581,896	\$1,327,221	(\$254,676)	(\$74)	-0.5%	Alternate Method	4.2%	\$420,955
SCHAUMBURG C C SCHOOL DIST 54	COOK	Elementary	\$10,382,252	\$9,624,464	(\$757,788)	(\$61)	-0.4%	Alternate Method	44.9%	\$1,359,795
MOUNT PROSPECT SCHOOL DIST 57	COOK	Elementary	\$1,105,784	\$965,171	(\$140,613)	(\$72)	-0.7%	Alternate Method	18.0%	\$282,483
COMM CONS SCH DIST 59	COOK	Elementary	\$8,392,817	\$8,219,647	(\$173,170)	(\$28)	-0.2%	Alternate Method	65.9%	\$844,679
DES PLAINES C C SCH DIST 62	COOK	Elementary	\$5,729,899	\$5,626,521	(\$103,378)	(\$25)	-0.1%	Alternate Method	66.5%	\$827,139
EAST MAINE SCHOOL DIST 63	COOK	Elementary	\$5,294,104	\$5,294,576	\$472	\$0	0.0%	Alternate Method	73.6%	\$371,105
PARK RIDGE C C SCHOOL DIST 64	COOK	Elementary	\$2,094,292	\$1,786,162	(\$308,130)	(\$75)	-0.4%	Alternate Method	13.0%	\$608,353
EVANSTON C C SCHOOL DIST 65	COOK	Elementary	\$5,417,311	\$4,960,044	(\$457,267)	(\$65)	-0.4%	Alternate Method	40.4%	\$954,533
GOLF ELEM SCHOOL DIST 67	COOK	Elementary	\$418,119	\$372,785	(\$45,334)	(\$72)	-0.5%	Alternate Method	36.7%	\$75,698
SKOKIE SCHOOL DIST 68	COOK	Elementary	\$1,758,185	\$1,627,382	(\$130,802)	(\$74)	-0.5%	Flat Grant	58.1%	\$260,327
SKOKIE SCHOOL DIST 69	COOK	Elementary	\$2,913,970	\$3,244,812	\$330,842	\$196	1.3%	Foundation	61.2%	\$182,783
MORTON GROVE SCHOOL DIST 70	COOK	Elementary	\$570,639	\$513,103	(\$57,536)	(\$69)	-0.5%	Alternate Method	35.4%	\$110,778
NILES ELEM SCHOOL DIST 71	COOK	Elementary	\$378,911	\$333,170	(\$45,741)	(\$90)	-0.5%	Flat Grant	47.9%	\$55,389
SKOKIE FAIRVIEW SCHOOL DIST 72	COOK	Elementary	\$373,760	\$308,568	(\$65,192)	(\$100)	-0.6%	Flat Grant	37.7%	\$112,624
EAST PRAIRIE SCHOOL DIST 73	COOK	Elementary	\$459,834	\$424,890	(\$34,944)	(\$61)	-0.5%	Alternate Method	42.0%	\$70,159
SKOKIE SCHOOL DIST 73-5	COOK	Elementary	\$866,306	\$814,110	(\$52,196)	(\$54)	-0.3%	Alternate Method	47.4%	\$152,319
LINCOLNWOOD SCHOOL DIST 74	COOK	Elementary	\$804,674	\$695,841	(\$108,833)	(\$93)	-0.5%	Flat Grant	45.1%	\$156,935
EVANSTON TWP H S DIST 202	COOK	High School	\$2,106,872	\$1,890,826	(\$216,046)	(\$70)	-0.3%	Alternate Method	34.8%	\$480,959
NEW TRIER TWP H S DIST 203	COOK	High School	\$1,364,128	\$952,432	(\$411,695)	(\$102)	-0.4%	Flat Grant	5.2%	\$598,199
MAINE TOWNSHIP H S DIST 207	COOK	High School	\$4,270,595	\$3,840,509	(\$430,086)	(\$69)	-0.3%	Alternate Method	34.7%	\$816,985
TOWNSHIP H S DIST 211	COOK	High School	\$7,864,224	\$7,079,266	(\$784,957)	(\$68)	-0.3%	Alternate Method	31.6%	\$1,176,088
TOWNSHIP HIGH SCHOOL DIST 214	COOK	High School	\$7,677,668	\$6,876,778	(\$800,890)	(\$71)	-0.3%	Alternate Method	33.8%	\$1,297,944
NILES TWP COMM HIGH SCH DIST 219	COOK	High School	\$3,560,946	\$3,266,404	(\$294,543)	(\$63)	-0.2%	Alternate Method	42.4%	\$554,811
NORTHFIELD TWP HIGH SCH DIST 225	COOK	High School	\$2,261,480	\$1,880,691	(\$380,789)	(\$80)	-0.3%	Alternate Method	16.6%	\$569,581
SAFE SCH - WEST COOK ISC 2	COOK	Regional	\$579,517	\$622,450	\$42,933	\$436	0.0%	Lab & Alternative	0.0%	\$0
ALOP SCH-INTERMEDIATE SERVICE CEN	COOK	Regional	\$2,927,805	\$3,144,709	\$216,903	\$436	0.0%	Lab & Alternative	0.0%	\$0
ROSEMONT ELEM SCHOOL DIST 78	COOK	Elementary	\$219,434	\$200,795	(\$18,639)	(\$75)	-0.4%	Flat Grant	55.2%	\$31,387
PENNOYER SCHOOL DIST 79	COOK	Elementary	\$367,547	\$343,102	(\$24,445)	(\$59)	-0.5%	Alternate Method	47.1%	\$41,542
NORRIDGE SCHOOL DIST 80	COOK	Elementary	\$925,146	\$857,217	(\$67,929)	(\$62)	-0.7%	Alternate Method	44.3%	\$116,316
SCHILLER PARK SCHOOL DIST 81	COOK	Elementary	\$2,462,188	\$2,732,705	\$270,517	\$196	1.6%	Foundation	71.4%	\$148,627
MANNHEIM SCHOOL DIST 83	COOK	Elementary	\$4,719,329	\$4,761,181	\$41,851	\$17	0.1%	Alternate Method	78.7%	\$394,184
FRANKLIN PARK SCHOOL DIST 84	COOK	Elementary	\$1,938,732	\$1,930,714	(\$8,018)	(\$7)	0.0%	Alternate Method	70.9%	\$167,089
RHODES SCHOOL DIST 84-5	COOK	Elementary	\$1,264,914	\$1,276,089	\$11,175	\$17	0.1%	Alternate Method	78.8%	\$74,775
RIVER GROVE SCHOOL DIST 85-5	COOK	Elementary	\$1,760,131	\$1,938,174	\$178,043	\$275	2.5%	Foundation	75.1%	\$88,622
UNION RIDGE SCHOOL DIST 86	COOK	Elementary	\$662,648	\$643,386	(\$19,262)	(\$36)	-0.3%	Alternate Method	60.6%	\$65,543
BERKELEY SCHOOL DIST 87	COOK	Elementary	\$10,685,255	\$11,399,788	\$714,534	\$280	2.3%	Foundation	89.4%	\$416,339

# ILLINOIS STATE BOARD OF EDUCATION

## District Detail Report

### January 6, 2016

### Exhibit G

Based upon the design of the GSA Formula, school districts with lower amounts of local wealth and higher concentrations of low-income students are to receive a greater amount of GSA on a per pupil basis as compared to school districts with higher amounts of local wealth and lower concentrations of low-income students. Due to the design, the GSA Formula is the most equitable funding mechanism in current statute and it measures a child's need based upon two distinct and separate measures. The Superintendent's Recommendation follows the principle of equitably distributing resources benefitting 77% of the students in school districts with the least amount of local wealth and the highest concentrations of low-income students in alignment with the design of the General State Aid Formula.

	Range of Gain/ (Loss)	\$ Per Pupil	% of Operating Revenue
Maxium Loss	\$	(106)	-0.9%
Maxium Gain	\$	436	5.2%
Median	\$	270	2.1%

District Name	County	Organization Type	FY 16 Actual Receipts * @ \$6,119 FLEVEL	FY 16 Simulated Receipts @ \$6,327 FLEVEL	Gain / Loss	Gain / Loss Per Student	Gain / Loss as % of Operating Revenue	Formula Type **	Low Income %	Maintenance of Effort ***
BELLWOOD SCHOOL DIST 88	COOK	Elementary	\$13,554,020	\$14,213,728	\$659,707	\$273	2.2%	Foundation	100.0%	\$325,871
MAYWOOD-MELROSE PARK-BROADVIEW-89	COOK	Elementary	\$35,196,607	\$36,614,455	\$1,417,848	\$272	2.6%	Foundation	98.1%	\$584,352
RIVER FOREST SCHOOL DIST 90	COOK	Elementary	\$631,859	\$533,970	(\$97,889)	(\$75)	-0.4%	Alternate Method	10.2%	\$227,094
FOREST PARK SCHOOL DIST 91	COOK	Elementary	\$1,127,708	\$1,118,907	(\$8,802)	(\$11)	-0.1%	Alternate Method	70.3%	\$153,242
LINDOP SCHOOL DISTRICT 92	COOK	Elementary	\$914,675	\$1,010,623	\$95,948	\$233	1.5%	Foundation	77.3%	\$48,004
WESTCHESTER SCHOOL DIST 92-5	COOK	Elementary	\$914,462	\$849,887	(\$64,575)	(\$58)	-0.4%	Alternate Method	45.2%	\$165,243
HILLSIDE SCHOOL DIST 93	COOK	Elementary	\$487,115	\$442,958	(\$44,157)	(\$81)	-0.6%	Flat Grant	54.3%	\$65,543
KOMAREK SCHOOL DIST 94	COOK	Elementary	\$288,916	\$254,187	(\$34,729)	(\$73)	-0.5%	Alternate Method	26.4%	\$104,316
BROOKFIELD SCHOOL DIST 95	COOK	Elementary	\$1,535,837	\$1,733,589	\$197,752	\$188	1.7%	Foundation	27.5%	\$110,778
RIVERSIDE SCHOOL DIST 96	COOK	Elementary	\$1,003,311	\$887,361	(\$115,949)	(\$72)	-0.5%	Alternate Method	27.0%	\$240,941
OAK PARK ELEM SCHOOL DIST 97	COOK	Elementary	\$9,472,605	\$10,626,031	\$1,153,427	\$208	1.5%	Foundation	22.5%	\$805,907
BERWYN NORTH SCHOOL DIST 98	COOK	Elementary	\$20,839,811	\$21,683,489	\$843,678	\$282	2.5%	Foundation	99.0%	\$545,580
CICERO SCHOOL DISTRICT 99	COOK	Elementary	\$91,292,379	\$94,455,547	\$3,163,168	\$269	2.6%	Foundation	100.0%	\$1,350,563
BERWYN SOUTH SCHOOL DISTRICT 100	COOK	Elementary	\$17,807,093	\$18,865,305	\$1,058,212	\$283	2.8%	Foundation	74.5%	\$474,497
WESTERN SPRINGS SCHOOL DIST 101	COOK	Elementary	\$703,960	\$606,102	(\$97,858)	(\$68)	-0.6%	Alternate Method	3.2%	\$114,470
LA GRANGE SCHOOL DIST 102	COOK	Elementary	\$2,273,902	\$2,659,951	\$386,049	\$128	1.2%	Foundation	19.1%	\$406,184
LYONS SCHOOL DIST 103	COOK	Elementary	\$5,596,537	\$6,179,025	\$582,488	\$254	2.0%	Foundation	71.8%	\$377,567
LA GRANGE SCHOOL DIST 105 (SOUTH)	COOK	Elementary	\$908,352	\$925,779	\$17,428	\$13	0.1%	Flat Grant	45.3%	\$260,327
LAGRANGE HIGHLANDS SCH DIST 106	COOK	Elementary	\$361,015	\$301,426	(\$59,589)	(\$76)	-0.5%	Alternate Method	11.3%	\$107,085
PLEASANTDALE SCHOOL DIST 107	COOK	Elementary	\$284,618	\$209,036	(\$75,582)	(\$106)	-0.6%	Flat Grant	19.3%	\$101,546
OAK PARK & RIVER FOREST DIST 200	COOK	High School	\$1,753,788	\$1,541,806	(\$211,982)	(\$71)	-0.3%	Alternate Method	22.9%	\$533,579
J S MORTON H S DISTRICT 201	COOK	High School	\$41,857,604	\$43,862,073	\$2,004,470	\$273	2.0%	Foundation	95.9%	\$922,223
LYONS TWP H S DIST 204	COOK	High School	\$2,114,464	\$1,824,939	(\$289,525)	(\$75)	-0.4%	Alternate Method	19.9%	\$432,956
RIVERSIDE BROOKFIELD TWP DIST 208	COOK	High School	\$1,215,448	\$1,408,165	\$192,717	\$130	0.9%	Foundation	24.6%	\$186,476
PROVISO TWP H S DIST 209	COOK	High School	\$12,685,145	\$13,062,294	\$377,150	\$88	0.5%	Alternate Method	95.8%	\$767,135
LEYDEN COMM H S DIST 212	COOK	High School	\$3,739,021	\$3,553,369	(\$185,652)	(\$50)	-0.3%	Alternate Method	51.7%	\$463,419
RIDGEWOOD COMM H S DIST 234	COOK	High School	\$655,785	\$608,886	(\$46,899)	(\$61)	-0.3%	Alternate Method	45.5%	\$96,007
ELMWOOD PARK C U SCH DIST 401	COOK	Unit	\$9,859,470	\$10,635,661	\$776,190	\$290	2.0%	Foundation	70.9%	\$491,114
SAFE SCH - SOUTH COOK ISC 4	COOK	Regional	\$964,586	\$1,036,046	\$71,460	\$436	0.0%	Lab & Alternative	0.0%	\$0
SUMMIT SCHOOL DIST 104	COOK	Elementary	\$8,471,646	\$8,931,193	\$459,547	\$274	2.0%	Foundation	92.8%	\$232,633
WILLOW SPRINGS SCHOOL DIST 108	COOK	Elementary	\$1,068,588	\$1,178,980	\$110,391	\$280	2.2%	Foundation	59.0%	\$63,697
INDIAN SPRINGS SCHOOL DIST 109	COOK	Elementary	\$11,030,120	\$11,795,656	\$765,537	\$281	2.4%	Foundation	77.4%	\$350,796
CENTRAL STICKNEY SCH DIST 110	COOK	Elementary	\$796,771	\$795,582	(\$1,189)	(\$3)	0.0%	Flat Grant	81.9%	\$67,390
BURBANK SCHOOL DISTRICT 111	COOK	Elementary	\$7,662,747	\$8,451,709	\$788,962	\$235	2.1%	Foundation	73.5%	\$470,805
LEMONT-BROMBEREK CSD 113A	COOK	Elementary	\$1,055,595	\$897,411	(\$158,184)	(\$76)	-0.7%	Alternate Method	23.0%	\$203,092
NORTH PALOS SCHOOL DIST 117	COOK	Elementary	\$7,430,937	\$8,189,619	\$758,682	\$265	1.9%	Foundation	73.6%	\$338,795
PALOS COMM CONS SCHOOL DIST 118	COOK	Elementary	\$1,015,341	\$883,265	(\$132,076)	(\$77)	-0.6%	Alternate Method	31.2%	\$312,947
RIDGELAND SCHOOL DISTRICT 122	COOK	Elementary	\$4,543,656	\$4,813,919	\$270,263	\$133	1.1%	Alternate Method	82.6%	\$346,180
OAK LAWN-HOMETOWN SCH DIST 123	COOK	Elementary	\$3,975,773	\$4,471,018	\$495,245	\$168	1.4%	Foundation	50.0%	\$434,802
EVERGREEN PK ELEM SCH DIST 124	COOK	Elementary	\$1,979,806	\$2,239,596	\$259,791	\$156	1.1%	Foundation	48.8%	\$281,560
ATWOOD HEIGHTS DISTRICT 125	COOK	Elementary	\$2,138,582	\$2,332,330	\$193,748	\$289	2.6%	Foundation	70.0%	\$132,933
ALSIP-HAZLGRN-OAKLWN S DIST 126	COOK	Elementary	\$1,928,695	\$1,881,863	(\$46,832)	(\$31)	-0.2%	Alternate Method	63.1%	\$226,171
WORTH SCHOOL DISTRICT 127	COOK	Elementary	\$3,879,997	\$4,177,880	\$297,883	\$283	2.2%	Foundation	72.3%	\$174,475
CHICAGO RIDGE SCHOOL DIST 127-5	COOK	Elementary	\$6,737,291	\$7,104,806	\$367,514	\$282	2.3%	Foundation	81.9%	\$194,784

**ILLINOIS STATE BOARD OF EDUCATION**  
**District Detail Report**  
**January 6, 2016**  
**Exhibit G**

Based upon the design of the GSA Formula, school districts with lower amounts of local wealth and higher concentrations of low-income students are to receive a greater amount of GSA on a per pupil basis as compared to school districts with higher amounts of local wealth and lower concentrations of low-income students. Due to the design, the GSA Formula is the most equitable funding mechanism in current statute and it measures a child's need based upon two distinct and separate measures. The Superintendent's Recommendation follows the principle of equitably distributing resources benefitting 77% of the students in school districts with the least amount of local wealth and the highest concentrations of low-income students in alignment with the design of the General State Aid Formula.

	Range of Gain/ (Loss)	\$ Per Pupil	% of Operating Revenue
<b>Maxium Loss</b>	<b>\$</b>	<b>(106)</b>	<b>-0.9%</b>
<b>Maxium Gain</b>	<b>\$</b>	<b>436</b>	<b>5.2%</b>
<b>Median</b>	<b>\$</b>	<b>270</b>	<b>2.1%</b>

District Name	County	Organization Type	FY 16 Actual Receipts * @ \$6,119 FLEVEL	FY 16 Simulated Receipts @ \$6,327 FLEVEL	Gain / Loss	Gain / Loss Per Student	Gain / Loss as % of Operating Revenue	Formula Type **	Low Income %	Maintenance of Effort ***
PALOS HEIGHTS SCHOOL DIST 128	COOK	Elementary	\$368,173	\$317,992	(\$50,181)	(\$74)	-0.6%	Alternate Method	26.2%	\$127,394
COOK COUNTY SCHOOL DIST 130	COOK	Elementary	\$14,036,567	\$14,974,276	\$937,709	\$279	2.0%	Foundation	85.1%	\$548,349
CALUMET PUBLIC SCHOOLS DIST 132	COOK	Elementary	\$7,746,806	\$8,052,023	\$305,217	\$277	2.4%	Foundation	100.0%	\$136,626
GEN GEO PATTON SCHOOL DIST 133	COOK	Elementary	\$1,947,541	\$2,028,566	\$81,025	\$276	1.7%	Foundation	100.0%	\$43,388
ORLAND SCHOOL DISTRICT 135	COOK	Elementary	\$2,814,711	\$2,478,661	(\$336,050)	(\$73)	-0.5%	Alternate Method	33.1%	\$828,062
KIRBY SCHOOL DIST 140	COOK	Elementary	\$3,663,228	\$4,191,004	\$527,776	\$154	1.2%	Foundation	33.9%	\$527,117
FOREST RIDGE SCHOOL DIST 142	COOK	Elementary	\$3,420,071	\$3,794,392	\$374,321	\$255	2.9%	Foundation	40.1%	\$238,172
MIDLOTHIAN SCHOOL DIST 143	COOK	Elementary	\$8,371,506	\$8,862,032	\$490,526	\$284	2.8%	Foundation	74.9%	\$292,637
POSEN-ROBBINS EL SCH DIST 143-5	COOK	Elementary	\$12,323,923	\$12,767,896	\$443,973	\$271	2.5%	Foundation	99.9%	\$139,395
PRAIRIE-HILLS ELEM SCH DIST 144	COOK	Elementary	\$14,374,239	\$15,043,239	\$669,001	\$278	2.5%	Foundation	93.1%	\$321,255
ARBOR PARK SCHOOL DISTRICT 145	COOK	Elementary	\$4,351,381	\$4,743,959	\$392,578	\$292	2.8%	Foundation	52.2%	\$183,706
TINLEY PARK COMM SCH DIST 146	COOK	Elementary	\$1,741,949	\$1,614,085	(\$127,864)	(\$61)	-0.4%	Alternate Method	43.4%	\$348,949
W HARVEY-DIXMOOR PUB SCH DIST147	COOK	Elementary	\$8,886,462	\$9,199,254	\$312,792	\$266	1.8%	Foundation	100.0%	\$180,937
DOLTON SCHOOL DISTRICT 148	COOK	Elementary	\$16,456,902	\$17,031,113	\$574,210	\$268	1.8%	Foundation	100.0%	\$260,327
DOLTON SCHOOL DISTRICT 149	COOK	Elementary	\$18,549,187	\$19,341,018	\$791,831	\$278	2.2%	Foundation	95.0%	\$356,335
SOUTH HOLLAND SCHOOL DIST 150	COOK	Elementary	\$1,780,329	\$1,969,929	\$189,600	\$218	1.9%	Foundation	66.1%	\$83,083
SOUTH HOLLAND SCHOOL DIST 151	COOK	Elementary	\$7,452,078	\$7,830,655	\$378,576	\$272	1.8%	Foundation	97.3%	\$235,402
HARVEY SCHOOL DISTRICT 152	COOK	Elementary	\$16,913,426	\$17,502,221	\$588,794	\$271	2.2%	Foundation	100.0%	\$220,632
HAZEL CREST SCHOOL DIST 152-5	COOK	Elementary	\$5,287,300	\$5,510,938	\$223,639	\$269	1.9%	Foundation	100.0%	\$103,392
HOMEWOOD SCHOOL DISTRICT 153	COOK	Elementary	\$4,379,131	\$4,854,449	\$475,318	\$268	2.4%	Foundation	34.3%	\$286,175
THORNTON SCHOOL DISTRICT 154	COOK	Elementary	\$227,041	\$218,090	(\$8,950)	(\$44)	-0.3%	Alternate Method	55.5%	\$26,771
BURNHAM SCHOOL DISTRICT 154-5	COOK	Elementary	\$1,062,340	\$1,113,268	\$50,928	\$276	2.4%	Foundation	88.8%	\$22,156
CALUMET CITY SCHOOL DISTRICT 155	COOK	Elementary	\$7,505,095	\$7,790,826	\$285,730	\$267	2.4%	Foundation	100.0%	\$183,706
LINCOLN ELEM SCHOOL DIST 156	COOK	Elementary	\$6,625,654	\$6,881,846	\$256,192	\$275	2.3%	Foundation	91.5%	\$108,008
HOOVER-SCHRUM MEMORIAL SD 157	COOK	Elementary	\$3,756,668	\$3,991,685	\$235,017	\$281	2.1%	Foundation	89.4%	\$113,547
LANSING SCHOOL DISTRICT 158	COOK	Elementary	\$9,987,404	\$10,672,467	\$685,062	\$285	2.6%	Foundation	67.9%	\$411,723
ELEM SCHOOL DISTRICT 159	COOK	Elementary	\$2,655,601	\$2,964,372	\$308,771	\$177	1.1%	Foundation	65.8%	\$228,940
COUNTRY CLUB HILLS SCH DIST 160	COOK	Elementary	\$6,082,963	\$6,417,542	\$334,580	\$282	2.2%	Foundation	85.4%	\$166,166
FLOSSMOOR SCHOOL DISTRICT 161	COOK	Elementary	\$5,004,240	\$5,556,081	\$551,841	\$248	2.0%	Foundation	38.6%	\$273,251
MATTESON ELEM SCHOOL DIST 162	COOK	Elementary	\$10,215,420	\$11,027,097	\$811,677	\$292	2.2%	Foundation	65.8%	\$396,953
PARK FOREST SCHOOL DIST 163	COOK	Elementary	\$12,010,161	\$12,524,945	\$514,784	\$279	2.1%	Foundation	82.9%	\$307,408
BROOKWOOD SCHOOL DIST 167	COOK	Elementary	\$5,000,762	\$5,321,481	\$320,719	\$282	2.4%	Foundation	79.1%	\$134,779
COMM CONS SCHOOL DIST 168	COOK	Elementary	\$10,097,401	\$10,461,804	\$364,403	\$277	2.1%	Foundation	100.0%	\$247,403
FORD HEIGHTS SCHOOL DISTRICT 169	COOK	Elementary	\$1,510,784	\$1,616,739	\$105,955	\$271	1.3%	Foundation	100.0%	\$58,158
CHICAGO HEIGHTS SCHOOL DIST 170	COOK	Elementary	\$21,057,448	\$21,866,310	\$808,863	\$269	2.3%	Foundation	100.0%	\$425,570
SUNNYBROOK SCHOOL DISTRICT 171	COOK	Elementary	\$4,108,287	\$4,391,901	\$283,615	\$283	2.4%	Foundation	72.8%	\$168,936
SANDRIDGE SCHOOL DISTRICT 172	COOK	Elementary	\$2,161,193	\$2,268,860	\$107,668	\$276	2.4%	Foundation	90.7%	\$56,312
STEGER SCHOOL DISTRICT 194	COOK	Elementary	\$5,465,072	\$5,859,351	\$394,279	\$284	2.7%	Foundation	73.2%	\$181,860
THORNTON TWP H S DIST 205	COOK	High School	\$27,956,925	\$29,283,432	\$1,326,507	\$272	1.4%	Foundation	100.0%	\$875,143
BLOOM TWP HIGH SCH DIST 206	COOK	High School	\$14,335,624	\$15,131,142	\$795,519	\$274	1.7%	Foundation	94.9%	\$501,268
LEMONT TWP H S DIST 210	COOK	High School	\$695,974	\$598,639	(\$97,335)	(\$74)	-0.4%	Alternate Method	15.0%	\$119,086
THORNTON FRACTIONAL T H S D 215	COOK	High School	\$16,069,675	\$17,050,033	\$980,358	\$287	2.0%	Foundation	68.0%	\$457,881
ARGO COMM H S DIST 217	COOK	High School	\$4,949,692	\$5,436,564	\$486,871	\$283	1.5%	Foundation	74.6%	\$230,787
COMMUNITY HIGH SCHOOL DIST 218	COOK	High School	\$9,868,766	\$10,943,289	\$1,074,523	\$213	1.1%	Foundation	65.4%	\$799,445

# ILLINOIS STATE BOARD OF EDUCATION

## District Detail Report

### January 6, 2016

### Exhibit G

Based upon the design of the GSA Formula, school districts with lower amounts of local wealth and higher concentrations of low-income students are to receive a greater amount of GSA on a per pupil basis as compared to school districts with higher amounts of local wealth and lower concentrations of low-income students. Due to the design, the GSA Formula is the most equitable funding mechanism in current statute and it measures a child's need based upon two distinct and separate measures. The Superintendent's Recommendation follows the principle of equitably distributing resources benefitting 77% of the students in school districts with the least amount of local wealth and the highest concentrations of low-income students in alignment with the design of the General State Aid Formula.

	Range of Gain/ (Loss)	\$ Per Pupil	% of Operating Revenue
<b>Maxium Loss</b>	<b>\$</b>	<b>(106)</b>	<b>-0.9%</b>
<b>Maxium Gain</b>	<b>\$</b>	<b>436</b>	<b>5.2%</b>
<b>Median</b>	<b>\$</b>	<b>270</b>	<b>2.1%</b>

District Name	County	Organization Type	FY 16 Actual Receipts * @ \$6,119 FLEVEL	FY 16 Simulated Receipts @ \$6,327 FLEVEL	Gain / Loss	Gain / Loss Per Student	Gain / Loss as % of Operating Revenue	Formula Type **	Low Income %	Maintenance of Effort ***
REAVIS TWP H S DIST 220	COOK	High School	\$2,158,503	\$2,101,878	(\$56,625)	(\$33)	-0.2%	Alternate Method	61.8%	\$230,787
RICH TWP H S DISTRICT 227	COOK	High School	\$13,319,800	\$14,417,475	\$1,097,676	\$310	1.9%	Foundation	66.1%	\$600,045
BREMEN COMM H S DISTRICT 228	COOK	High School	\$19,089,045	\$20,510,463	\$1,421,419	\$293	1.9%	Foundation	59.1%	\$765,288
OAK LAWN COMM H S DIST 229	COOK	High School	\$2,581,625	\$2,880,082	\$298,458	\$177	1.0%	Foundation	59.5%	\$239,095
CONS HIGH SCHOOL DISTRICT 230	COOK	High School	\$5,421,885	\$4,916,205	(\$505,680)	(\$66)	-0.4%	Alternate Method	30.5%	\$960,995
EVERGREEN PARK COMM HI SCH D 231	COOK	High School	\$1,179,806	\$1,325,852	\$146,047	\$171	0.8%	Foundation	42.5%	\$118,163
HOMEWOOD FLOSSMOOR C H S D 233	COOK	High School	\$8,742,646	\$9,535,291	\$792,644	\$302	1.7%	Foundation	29.3%	\$394,184
CITY OF CHICAGO SCHOOL DIST 299	COOK	Unit	\$1,072,365,788	\$1,137,086,207	\$64,720,419	\$184	1.2%	Foundation	89.5%	\$49,176,008
HUTSONVILLE C U SCHOOL DIST 1	CRAWFORD	Unit	\$1,102,471	\$1,200,792	\$98,322	\$301	3.3%	Foundation	44.4%	\$46,157
ROBINSON C U SCHOOL DIST 2	CRAWFORD	Unit	\$1,493,002	\$1,423,360	(\$69,641)	(\$48)	-0.5%	Alternate Method	52.8%	\$257,558
PALESTINE C U SCHOOL DIST 3	CRAWFORD	Unit	\$1,141,316	\$1,236,153	\$94,837	\$301	3.5%	Foundation	47.4%	\$42,465
OBLONG C U SCHOOL DIST 4	CRAWFORD	Unit	\$2,086,440	\$2,242,177	\$155,737	\$293	3.4%	Foundation	50.8%	\$90,468
NEOGA COMM UNIT SCHOOL DIST 3	CUMBERLAND	Unit	\$2,179,497	\$2,373,583	\$194,086	\$299	3.6%	Foundation	45.7%	\$137,549
CUMBERLAND C U SCHOOL DIST 77	CUMBERLAND	Unit	\$3,997,804	\$4,275,862	\$278,058	\$294	3.8%	Foundation	51.0%	\$178,167
SAFE SCH-DE KALB ROE	DEKALB	Regional	\$182,020	\$195,504	\$13,485	\$436	0.0%	Lab & Alternative	0.0%	\$0
GENOA KINGSTON C U S DIST 424	DEKALB	Unit	\$5,959,984	\$6,497,773	\$537,789	\$305	3.1%	Foundation	36.4%	\$176,321
INDIAN CREEK COMM UNIT DIST 425	DEKALB	Unit	\$464,199	\$415,849	(\$48,350)	(\$68)	-0.5%	Alternate Method	30.5%	\$101,546
HIAWATHA C U SCHOOL DIST 426	DEKALB	Unit	\$1,354,014	\$1,502,989	\$148,975	\$280	2.8%	Foundation	44.8%	\$74,775
SYCAMORE C U SCHOOL DIST 427	DEKALB	Unit	\$8,673,878	\$9,648,168	\$974,290	\$269	2.3%	Foundation	31.0%	\$476,344
DEKALB COMM UNIT SCH DIST 428	DEKALB	Unit	\$18,711,301	\$20,390,952	\$1,679,650	\$291	2.2%	Foundation	56.2%	\$904,683
HINCKLEY BIG ROCK C U S D 429	DEKALB	Unit	\$436,010	\$389,809	(\$46,200)	(\$69)	-0.5%	Alternate Method	28.7%	\$100,623
SANDWICH C U SCHOOL DIST 430	DEKALB	Unit	\$5,055,000	\$5,618,352	\$563,351	\$272	2.5%	Foundation	44.3%	\$280,636
SOMONAUK C U SCHOOL DIST 432	DEKALB	Unit	\$1,360,610	\$1,532,224	\$171,613	\$217	2.0%	Foundation	31.3%	\$118,163
CLINTON C U SCHOOL DIST 15	DEWITT	Unit	\$1,664,024	\$1,569,222	(\$94,802)	(\$54)	-0.6%	Alternate Method	51.2%	\$340,641
BLUE RIDGE COMM UNIT SCH DIST 18	DEWITT	Unit	\$650,479	\$748,121	\$97,642	\$136	1.2%	Foundation	42.6%	\$91,391
TUSCOLA C U SCHOOL DIST 301	DOUGLAS	Unit	\$1,120,949	\$1,273,189	\$152,240	\$160	1.9%	Foundation	39.1%	\$138,472
VILLA GROVE C U SCH DIST 302	DOUGLAS	Unit	\$2,121,331	\$2,312,824	\$191,493	\$298	4.0%	Foundation	40.4%	\$119,086
ARCOLA C U SCHOOL DISTRICT 306	DOUGLAS	Unit	\$2,675,352	\$2,883,985	\$208,633	\$293	3.0%	Foundation	53.1%	\$160,627
SAFE SCH-DU PAGE ROE	DUPAGE	Regional	\$262,603	\$282,058	\$19,455	\$436	0.0%	Lab & Alternative	0.0%	\$0
ALOP-DU PAGE ROE	DUPAGE	Regional	\$3,185,225	\$3,421,199	\$235,974	\$436	0.0%	Lab & Alternative	0.0%	\$0
BENSENVILLE SCHOOL DISTRICT 2	DUPAGE	Elementary	\$3,147,969	\$3,127,417	(\$20,552)	(\$10)	-0.1%	Alternate Method	70.5%	\$281,560
ADDISON SCHOOL DIST 4	DUPAGE	Elementary	\$8,432,599	\$8,581,198	\$148,599	\$39	0.3%	Alternate Method	83.6%	\$655,434
WOOD DALE SCHOOL DISTRICT 7	DUPAGE	Elementary	\$1,234,772	\$1,179,874	(\$54,898)	(\$54)	-0.4%	Flat Grant	66.0%	\$101,546
ITASCA SCHOOL DIST 10	DUPAGE	Elementary	\$398,195	\$300,353	(\$97,842)	(\$106)	-0.9%	Flat Grant	23.9%	\$116,316
MEDINAH SCHOOL DISTRICT 11	DUPAGE	Elementary	\$558,423	\$521,078	(\$37,345)	(\$60)	-0.4%	Alternate Method	50.7%	\$85,853
ROSELLE SCHOOL DISTRICT 12	DUPAGE	Elementary	\$429,457	\$381,666	(\$47,791)	(\$70)	-0.6%	Alternate Method	31.8%	\$100,623
BLOOMINGDALE SCHOOL DISTRICT 13	DUPAGE	Elementary	\$651,371	\$564,107	(\$87,264)	(\$77)	-0.5%	Alternate Method	29.6%	\$159,704
MARQUARDT SCHOOL DISTRICT 15	DUPAGE	Elementary	\$8,479,471	\$9,154,385	\$674,914	\$278	1.6%	Foundation	89.5%	\$309,254
QUEEN BEE SCHOOL DISTRICT 16	DUPAGE	Elementary	\$5,509,718	\$6,028,431	\$518,714	\$287	2.0%	Foundation	64.0%	\$225,248
KEENEYVILLE SCHOOL DISTRICT 20	DUPAGE	Elementary	\$1,828,369	\$1,830,654	\$2,285	\$2	0.0%	Alternate Method	63.2%	\$216,016
BENJAMIN SCHOOL DISTRICT 25	DUPAGE	Elementary	\$382,686	\$335,079	(\$47,607)	(\$71)	-0.4%	Alternate Method	21.0%	\$88,622
WEST CHICAGO SCHOOL DIST 33	DUPAGE	Elementary	\$16,076,498	\$17,231,633	\$1,155,135	\$280	2.1%	Foundation	80.6%	\$686,821
WINFIELD SCHOOL DISTRICT 34	DUPAGE	Elementary	\$163,890	\$141,251	(\$22,639)	(\$77)	-0.5%	Alternate Method	26.6%	\$51,696
GLEN ELLYN SCHOOL DISTRICT 41	DUPAGE	Elementary	\$1,871,065	\$1,643,776	(\$227,290)	(\$71)	-0.5%	Alternate Method	28.3%	\$388,645

# ILLINOIS STATE BOARD OF EDUCATION

## District Detail Report

### January 6, 2016

### Exhibit G

Based upon the design of the GSA Formula, school districts with lower amounts of local wealth and higher concentrations of low-income students are to receive a greater amount of GSA on a per pupil basis as compared to school districts with higher amounts of local wealth and lower concentrations of low-income students. Due to the design, the GSA Formula is the most equitable funding mechanism in current statute and it measures a child's need based upon two distinct and separate measures. The Superintendent's Recommendation follows the principle of equitably distributing resources benefitting 77% of the students in school districts with the least amount of local wealth and the highest concentrations of low-income students in alignment with the design of the General State Aid Formula.

Range of Gain/ (Loss)      \$ Per Pupil      % of Operating Revenue

<b>Maximum Loss</b>	<b>\$</b>	<b>(106)</b>	<b>-0.9%</b>
<b>Maximum Gain</b>	<b>\$</b>	<b>436</b>	<b>5.2%</b>
<b>Median</b>	<b>\$</b>	<b>270</b>	<b>2.1%</b>

District Name	County	Organization Type	FY 16 Actual Receipts * @ \$6,119 FLEVEL	FY 16 Simulated Receipts @ \$6,327 FLEVEL	Gain / Loss	Gain / Loss Per Student	Gain / Loss as % of Operating Revenue	Formula Type **	Low Income %	Maintenance of Effort ***
LOMBARD SCHOOL DISTRICT 44	DUPAGE	Elementary	\$2,327,297	\$2,143,846	(\$183,451)	(\$63)	-0.4%	Alternate Method	43.7%	\$397,876
VILLA PARK SCHOOL DIST 45	DUPAGE	Elementary	\$3,974,503	\$3,871,208	(\$103,295)	(\$33)	-0.3%	Alternate Method	61.4%	\$589,891
SALT CREEK SCHOOL DIST 48	DUPAGE	Elementary	\$375,264	\$335,278	(\$39,986)	(\$86)	-0.4%	Flat Grant	50.8%	\$52,619
BUTLER SCHOOL DISTRICT 53	DUPAGE	Elementary	\$159,049	\$109,636	(\$49,412)	(\$104)	-0.5%	Flat Grant	3.9%	\$56,312
DOWNERS GROVE GRADE SCH DIST 58	DUPAGE	Elementary	\$1,938,423	\$1,447,198	(\$491,225)	(\$106)	-0.8%	Flat Grant	22.2%	\$655,434
MAERCKER SCHOOL DISTRICT 60	DUPAGE	Elementary	\$1,021,829	\$948,314	(\$73,515)	(\$62)	-0.4%	Alternate Method	49.4%	\$108,008
DARIEN SCHOOL DIST 61	DUPAGE	Elementary	\$1,325,849	\$1,243,571	(\$82,278)	(\$52)	-0.5%	Alternate Method	44.9%	\$216,016
GOWER SCHOOL DIST 62	DUPAGE	Elementary	\$366,914	\$291,523	(\$75,391)	(\$98)	-0.6%	Flat Grant	30.7%	\$102,469
CASS SCHOOL DIST 63	DUPAGE	Elementary	\$374,843	\$320,205	(\$54,638)	(\$78)	-0.5%	Alternate Method	25.9%	\$105,239
CENTER CASS SCHOOL DIST 66	DUPAGE	Elementary	\$409,271	\$411,848	\$2,577	\$3	0.0%	Flat Grant	22.9%	\$91,391
WOODRIDGE SCHOOL DIST 68	DUPAGE	Elementary	\$3,089,818	\$2,979,813	(\$110,005)	(\$41)	-0.3%	Alternate Method	57.2%	\$408,031
HINSDALE TWP H S DIST 86	DUPAGE	High School	\$1,684,343	\$1,226,530	(\$457,813)	(\$104)	-0.5%	Flat Grant	17.0%	\$451,419
GLENBARD TWP H S DIST 87	DUPAGE	High School	\$5,605,933	\$5,107,521	(\$498,412)	(\$64)	-0.4%	Alternate Method	36.3%	\$905,607
DU PAGE HIGH SCHOOL DIST 88	DUPAGE	High School	\$3,808,484	\$3,665,148	(\$143,336)	(\$42)	-0.2%	Alternate Method	58.0%	\$525,270
GLEN ELLYN C C SCHOOL DIST 89	DUPAGE	Elementary	\$992,564	\$846,277	(\$146,287)	(\$77)	-0.5%	Alternate Method	22.9%	\$222,478
COMMUNITY CONSOLIDATED S D 93	DUPAGE	Elementary	\$2,770,054	\$2,528,380	(\$241,675)	(\$66)	-0.4%	Alternate Method	38.1%	\$504,038
COMMUNITY HIGH SCH DISTRICT 94	DUPAGE	High School	\$2,030,487	\$1,956,474	(\$74,013)	(\$38)	-0.3%	Alternate Method	53.7%	\$242,787
COMMUNITY HIGH SCHOOL DIST 99	DUPAGE	High School	\$2,840,301	\$2,476,132	(\$364,169)	(\$74)	-0.4%	Alternate Method	25.7%	\$583,429
FENTON COMM H S DIST 100	DUPAGE	High School	\$1,490,972	\$1,417,077	(\$73,895)	(\$50)	-0.3%	Alternate Method	54.2%	\$169,859
LAKE PARK COMM H S DIST 108	DUPAGE	High School	\$1,648,652	\$1,464,779	(\$183,873)	(\$71)	-0.4%	Alternate Method	30.0%	\$279,713
COMMUNITY CONS SCH DIST 180	DUPAGE	Elementary	\$1,454,378	\$1,486,006	\$31,628	\$52	0.3%	Alternate Method	88.0%	\$114,470
HINSDALE C C SCHOOL DIST 181	DUPAGE	Elementary	\$1,253,120	\$884,810	(\$368,311)	(\$100)	-0.6%	Flat Grant	6.5%	\$391,414
COMMUNITY UNIT SCHOOL DIST 200	DUPAGE	Unit	\$8,176,984	\$7,334,100	(\$842,884)	(\$69)	-0.5%	Alternate Method	31.2%	\$1,885,065
WESTMONT C U SCHOOL DIST 201	DUPAGE	Unit	\$801,953	\$812,479	\$10,526	\$8	0.0%	Flat Grant	42.2%	\$196,630
LISLE C U SCH DIST 202	DUPAGE	Unit	\$816,556	\$673,068	(\$143,488)	(\$100)	-0.5%	Flat Grant	37.5%	\$241,864
NAPERVILLE C U DIST 203	DUPAGE	Unit	\$8,388,200	\$7,220,401	(\$1,167,800)	(\$73)	-0.5%	Alternate Method	16.5%	\$1,667,202
INDIAN PRAIRIE C U SCH DIST 204	DUPAGE	Unit	\$30,818,069	\$35,350,152	\$4,532,083	\$168	1.5%	Foundation	17.0%	\$2,857,138
ELMHURST SCHOOL DIST 205	DUPAGE	Unit	\$4,173,865	\$3,605,617	(\$568,249)	(\$74)	-0.5%	Alternate Method	18.3%	\$1,086,543
SHILOH COMM UNIT SCH DIST 1	EDGAR	Unit	\$502,169	\$495,354	(\$6,815)	(\$19)	-0.2%	Alternate Method	66.5%	\$98,777
KANSAS COMM UNIT SCHOOL DIST 3	EDGAR	Unit	\$508,620	\$564,646	\$56,026	\$258	2.8%	Foundation	59.9%	\$24,002
PARIS COMM UNIT SCHOOL DIST 4	EDGAR	Unit	\$1,401,431	\$1,560,069	\$158,638	\$249	3.1%	Foundation	39.3%	\$84,929
EDGAR COUNTY C U DIST 6	EDGAR	Unit	\$513,185	\$575,454	\$62,268	\$200	2.0%	Foundation	42.0%	\$74,775
PARIS-UNION SCHOOL DIST 95	EDGAR	Unit	\$6,109,304	\$6,446,323	\$337,019	\$284	3.3%	Foundation	70.3%	\$310,177
EDWARDS COUNTY C U SCH DIST 1	EDWARDS	Unit	\$3,674,957	\$3,944,687	\$269,730	\$302	3.9%	Foundation	38.7%	\$156,012
ALTAMONT COMM UNIT SCH DIST 10	EFFINGHAM	Unit	\$2,902,873	\$3,119,698	\$216,825	\$295	3.8%	Foundation	55.0%	\$126,471
BEECHER CITY C U SCHOOL DIST 20	EFFINGHAM	Unit	\$485,629	\$544,295	\$58,666	\$181	2.1%	Foundation	61.4%	\$45,234
DIETERICH COMM UNIT SCH DIST 30	EFFINGHAM	Unit	\$1,744,871	\$1,876,939	\$132,068	\$301	3.8%	Foundation	33.3%	\$63,697
EFFINGHAM COMM UNIT SCH DIST 40	EFFINGHAM	Unit	\$5,309,670	\$5,895,882	\$586,212	\$227	2.8%	Foundation	54.4%	\$459,727
TEUTOPOLIS C U SCHOOL DIST 50	EFFINGHAM	Unit	\$2,994,298	\$3,320,810	\$326,512	\$309	4.2%	Foundation	14.6%	\$135,703
ALT SCH-BOND/EFFINGHAM/FAYETTE RO	FAYETTE	Regional	\$399,972	\$429,603	\$29,631	\$436	0.0%	Lab & Alternative	0.0%	\$0
SAFE SCH-BOND/EFFINGHAM/FAYETTE R	FAYETTE	Regional	\$361,801	\$388,604	\$26,804	\$436	0.0%	Lab & Alternative	0.0%	\$0
BROWNSTOWN C U SCH DIST 201	FAYETTE	Unit	\$1,662,842	\$1,763,208	\$100,366	\$291	2.8%	Foundation	55.3%	\$63,697
ST ELMO C U SCHOOL DIST 202	FAYETTE	Unit	\$1,750,569	\$1,876,380	\$125,811	\$291	3.3%	Foundation	58.1%	\$64,620
VANDALIA C U SCH DIST 203	FAYETTE	Unit	\$5,900,764	\$6,309,643	\$408,879	\$293	3.2%	Foundation	58.6%	\$234,479

**ILLINOIS STATE BOARD OF EDUCATION**  
**District Detail Report**  
**January 6, 2016**  
**Exhibit G**

Based upon the design of the GSA Formula, school districts with lower amounts of local wealth and higher concentrations of low-income students are to receive a greater amount of GSA on a per pupil basis as compared to school districts with higher amounts of local wealth and lower concentrations of low-income students. Due to the design, the GSA Formula is the most equitable funding mechanism in current statute and it measures a child's need based upon two distinct and separate measures. The Superintendent's Recommendation follows the principle of equitably distributing resources benefitting 77% of the students in school districts with the least amount of local wealth and the highest concentrations of low-income students in alignment with the design of the General State Aid Formula.

Range of Gain/ (Loss)      \$ Per Pupil      % of Operating Revenue

**Maxium Loss**      \$      (106)      -0.9%  
**Maxium Gain**      \$      436      5.2%  
**Median**      \$      270      2.1%

District Name	County	Organization Type	FY 16 Actual Receipts * @ \$6,119 FLEVEL	FY 16 Simulated Receipts @ \$6,327 FLEVEL	Gain / Loss	Gain / Loss Per Student	Gain / Loss as % of Operating Revenue	Formula Type **	Low Income %	Maintenance of Effort ***
RAMSEY COMM UNIT SCH DIST 204	FAYETTE	Unit	\$2,237,537	\$2,363,103	\$125,565	\$292	3.3%	Foundation	64.4%	\$72,005
GIBSON CITY-MELVIN-SIBLEY CUSD 5	FORD	Unit	\$2,299,538	\$2,556,106	\$256,568	\$257	2.6%	Foundation	39.8%	\$148,627
PAXTON-BUCKLEY-LODA CU DIST 10	FORD	Unit	\$3,607,304	\$3,992,741	\$385,438	\$291	3.0%	Foundation	47.2%	\$217,863
ALT SCH-FRANKLIN/WILLIAMSON ROE	FRANKLIN	Regional	\$541,170	\$581,261	\$40,092	\$436	0.0%	Lab & Alternative	0.0%	\$0
SAFE SCH-FRANKLIN/WILLIAMSON ROE	FRANKLIN	Regional	\$99,846	\$107,243	\$7,397	\$436	0.0%	Lab & Alternative	0.0%	\$0
BENTON COMM CONS SCH DIST 47	FRANKLIN	Elementary	\$4,970,163	\$5,278,322	\$308,159	\$288	3.6%	Foundation	63.0%	\$203,092
AKIN COMM CONS SCHOOL DIST 91	FRANKLIN	Elementary	\$181,955	\$186,285	\$4,330	\$53	0.3%	Alternate Method	86.6%	\$16,617
CHRISTOPHER UNIT 99	FRANKLIN	Unit	\$4,460,822	\$4,676,523	\$215,701	\$286	3.3%	Foundation	68.2%	\$145,857
BENTON CONS HIGH SCHOOL DIST 103	FRANKLIN	High School	\$2,315,864	\$2,471,546	\$155,682	\$290	2.3%	Foundation	58.9%	\$98,777
EWING NORTHERN C C DISTRICT 115	FRANKLIN	Elementary	\$837,544	\$896,114	\$58,570	\$298	3.4%	Foundation	44.2%	\$22,156
FRANKFORT COMM UNIT SCH DIST 168	FRANKLIN	Unit	\$9,487,937	\$9,960,682	\$472,745	\$284	3.0%	Foundation	72.3%	\$326,794
THOMPSONVILLE CUSD 174	FRANKLIN	Unit	\$1,491,115	\$1,580,785	\$89,671	\$293	3.6%	Foundation	55.3%	\$41,542
ZEIGLER-ROYALTON C U S DIST 188	FRANKLIN	Unit	\$3,596,688	\$3,759,138	\$162,450	\$284	3.2%	Foundation	77.1%	\$126,471
SESSER-VALIER COMM UNIT S D 196	FRANKLIN	Unit	\$3,214,019	\$3,405,598	\$191,579	\$296	3.6%	Foundation	54.4%	\$82,160
ASTORIA COMM UNIT SCH DIST 1	FULTON	Unit	\$1,561,577	\$1,657,626	\$96,049	\$297	3.1%	Foundation	65.0%	\$54,466
V I T COMM UNIT SCH DISTRICT 2	FULTON	Unit	\$622,059	\$694,851	\$72,792	\$221	2.0%	Foundation	38.0%	\$52,619
COMM UNIT SCH DIST 3 FULTON CTY	FULTON	Unit	\$1,542,783	\$1,675,400	\$132,618	\$294	3.0%	Foundation	57.2%	\$72,005
SPOON RIVER VALLEY C U S DIST 4	FULTON	Unit	\$601,353	\$674,008	\$72,655	\$216	2.0%	Foundation	45.3%	\$56,312
CANTON UNION SCHOOL DIST 66	FULTON	Unit	\$7,018,171	\$7,723,843	\$705,673	\$294	3.4%	Foundation	54.1%	\$428,340
LEWISTOWN SCHOOL DIST 97	FULTON	Unit	\$2,353,049	\$2,542,991	\$189,942	\$294	3.3%	Foundation	52.2%	\$107,085
GALLATIN C U SCHOOL DISTRICT 7	GALLATIN	Unit	\$2,900,874	\$3,109,749	\$208,875	\$287	3.3%	Foundation	63.6%	\$178,167
CARROLLTON C U SCHOOL DIST 1	GREENE	Unit	\$1,956,939	\$2,121,627	\$164,689	\$291	3.4%	Foundation	55.8%	\$91,391
NORTH GREENE UNIT SCHOOL DIST 3	GREENE	Unit	\$3,824,130	\$4,061,115	\$236,985	\$288	3.3%	Foundation	66.4%	\$185,552
GREENFIELD C U SCHOOL DIST 10	GREENE	Unit	\$1,164,054	\$1,287,653	\$123,599	\$300	3.4%	Foundation	41.8%	\$55,389
SAFE SCH-GRUNDY/KENDALL ROE	GRUNDY	Regional	\$799,413	\$858,637	\$59,224	\$436	0.0%	Lab & Alternative	0.0%	\$0
COAL CITY C U SCHOOL DISTRICT 1	GRUNDY	Unit	\$940,061	\$734,937	(\$205,124)	(\$104)	-0.8%	Flat Grant	29.5%	\$263,097
MAZON-VERONA-KINSMAN ESD 2C	GRUNDY	Elementary	\$229,134	\$209,462	(\$19,672)	(\$62)	-0.5%	Alternate Method	38.2%	\$58,158
NETTLE CREEK C C SCH DIST 24C	GRUNDY	Elementary	\$39,111	\$32,881	(\$6,230)	(\$74)	-0.6%	Alternate Method	17.1%	\$11,078
MORRIS SCHOOL DISTRICT 54	GRUNDY	Elementary	\$2,352,148	\$2,615,652	\$263,504	\$233	3.4%	Foundation	47.8%	\$166,166
SARATOGA COMM CONS S DIST 60C	GRUNDY	Elementary	\$746,106	\$854,130	\$108,025	\$144	1.5%	Foundation	39.8%	\$100,623
GARDNER COMM CONS SCH DIST 72C	GRUNDY	Elementary	\$791,200	\$853,516	\$62,316	\$305	3.4%	Foundation	48.1%	\$43,388
GARDNER S WILMINGTON THS DIST 73	GRUNDY	High School	\$526,813	\$582,476	\$55,663	\$300	2.0%	Foundation	40.9%	\$32,310
SOUTH WILMINGTON CONS SCH DIST 74	GRUNDY	Elementary	\$215,835	\$241,267	\$25,432	\$238	2.6%	Foundation	26.5%	\$12,924
BRACEVILLE SCHOOL DIST 75	GRUNDY	Elementary	\$716,661	\$763,889	\$47,229	\$303	3.3%	Foundation	70.1%	\$30,464
MORRIS COMM HIGH SCH DIST 101	GRUNDY	High School	\$1,465,837	\$1,642,031	\$176,194	\$190	1.8%	Foundation	33.7%	\$96,007
MINOOKA COMM H S DISTRICT 111	GRUNDY	High School	\$3,841,583	\$4,339,893	\$498,310	\$197	1.8%	Foundation	19.4%	\$240,018
MINOOKA COMM CONS S DIST 201	GRUNDY	Elementary	\$7,282,417	\$8,141,518	\$859,101	\$228	2.8%	Foundation	27.0%	\$535,425
HAMILTON CO C U SCHOOL DIST 10	HAMILTON	Unit	\$4,769,001	\$5,099,437	\$330,436	\$293	3.2%	Foundation	53.9%	\$236,325
ILLINI WEST H S DIST 307	HANCOCK	High School	\$1,030,205	\$1,141,378	\$111,174	\$301	2.9%	Foundation	42.0%	\$49,850
WARSAW COMM UNIT SCH DISTRICT 316	HANCOCK	Unit	\$1,436,080	\$1,548,317	\$112,237	\$297	2.9%	Foundation	41.8%	\$61,851
CARTHAGE ESD 317	HANCOCK	Elementary	\$901,769	\$999,744	\$97,975	\$255	3.0%	Foundation	51.3%	\$45,234
NAUVOO-COLUSA C U S DIST 325	HANCOCK	Unit	\$244,362	\$232,021	(\$12,341)	(\$48)	-0.4%	Alternate Method	50.5%	\$40,618
DALLAS ESD 327	HANCOCK	Elementary	\$797,682	\$847,170	\$49,487	\$289	2.4%	Foundation	83.3%	\$29,541
HAMILTON C C SCHOOL DIST 328	HANCOCK	Unit	\$1,249,699	\$1,385,845	\$136,146	\$267	2.8%	Foundation	44.0%	\$103,392



# ILLINOIS STATE BOARD OF EDUCATION

## District Detail Report

### January 6, 2016

### Exhibit G

Based upon the design of the GSA Formula, school districts with lower amounts of local wealth and higher concentrations of low-income students are to receive a greater amount of GSA on a per pupil basis as compared to school districts with higher amounts of local wealth and lower concentrations of low-income students. Due to the design, the GSA Formula is the most equitable funding mechanism in current statute and it measures a child's need based upon two distinct and separate measures. The Superintendent's Recommendation follows the principle of equitably distributing resources benefitting 77% of the students in school districts with the least amount of local wealth and the highest concentrations of low-income students in alignment with the design of the General State Aid Formula.

	Range of Gain/ (Loss)	\$ Per Pupil	% of Operating Revenue
Maxium Loss	\$	(106)	-0.9%
Maxium Gain	\$	436	5.2%
Median	\$	270	2.1%

District Name	County	Organization Type	FY 16 Actual Receipts * @ \$6,119 FLEVEL	FY 16 Simulated Receipts @ \$6,327 FLEVEL	Gain / Loss	Gain / Loss Per Student	Gain / Loss as % of Operating Revenue	Formula Type **	Low Income %	Maintenance of Effort ***
SOUTHEASTERN C U SCH DIST 337	HANCOCK	Unit	\$1,729,336	\$1,868,355	\$139,019	\$293	3.0%	Foundation	70.0%	\$112,624
LA HARPE CUSD 347	HANCOCK	Elementary	\$408,041	\$454,814	\$46,773	\$223	1.9%	Foundation	44.3%	\$45,234
HARDIN CO COMM UNIT DIST 1	HARDIN	Unit	\$2,671,619	\$2,834,549	\$162,930	\$291	3.4%	Foundation	66.3%	\$132,010
WEST CENTRAL	HENDERSON	Unit	\$1,684,858	\$1,875,376	\$190,517	\$237	2.5%	Foundation	50.9%	\$108,931
SAFE SCH-BUREAU/HENRY/STARK ROE	HENRY	Regional	\$66,732	\$71,559	\$4,827	\$436	0.0%	Lab & Alternative	0.0%	\$0
COLONA SCHOOL DISTRICT 190	HENRY	Elementary	\$1,773,278	\$1,895,030	\$121,752	\$296	3.4%	Foundation	54.1%	\$70,159
ORION COMM UNIT SCHOOL DIST 223	HENRY	Unit	\$1,950,087	\$2,186,456	\$236,368	\$237	2.7%	Foundation	21.3%	\$158,781
GALVA COMM UNIT SCH DIST 224	HENRY	Unit	\$1,055,557	\$1,176,943	\$121,386	\$231	2.5%	Foundation	46.5%	\$96,930
ALWOOD COMM UNIT SCH DIST 225	HENRY	Unit	\$407,906	\$466,649	\$58,743	\$159	1.5%	Foundation	32.3%	\$72,005
ANNAWAN COMM UNIT SCH DIST 226	HENRY	Unit	\$779,906	\$870,643	\$90,736	\$242	2.8%	Foundation	27.8%	\$43,388
CAMBRIDGE C U SCH DIST 227	HENRY	Unit	\$1,089,918	\$1,209,654	\$119,736	\$267	2.6%	Foundation	38.1%	\$70,159
GENESE COMM UNIT SCH DIST 228	HENRY	Unit	\$4,665,180	\$5,234,627	\$569,446	\$234	3.0%	Foundation	23.3%	\$256,635
KEWANEE COMM UNIT SCH DIST 229	HENRY	Unit	\$9,909,527	\$10,390,252	\$480,726	\$283	3.0%	Foundation	74.4%	\$324,024
WETHERSFIELD C U SCH DIST 230	HENRY	Unit	\$2,016,505	\$2,188,038	\$171,533	\$301	3.7%	Foundation	47.9%	\$70,159
DONOVAN COMM UNIT SCHOOL DIST 3	IROQUOIS	Unit	\$1,121,652	\$1,222,808	\$101,156	\$299	3.0%	Foundation	50.1%	\$50,773
CENTRAL COMM UNIT SCHOOL DIST 4	IROQUOIS	Unit	\$2,979,363	\$3,282,787	\$303,424	\$298	3.3%	Foundation	40.1%	\$136,626
CISSNA PARK COMM UNIT SCH DIST 6	IROQUOIS	Unit	\$671,010	\$745,600	\$74,590	\$277	2.6%	Foundation	29.7%	\$35,080
IROQUOIS CO C U SCHOOL DIST 9	IROQUOIS	Unit	\$4,349,122	\$4,644,089	\$294,967	\$290	3.0%	Foundation	67.3%	\$158,781
IROQUOIS WEST C U S DIST 10	IROQUOIS	Unit	\$3,551,134	\$3,814,945	\$263,811	\$290	2.7%	Foundation	56.9%	\$199,400
MILFORD AREA DIST 124	IROQUOIS	Unit	\$1,490,411	\$1,649,530	\$159,119	\$270	2.3%	Foundation	59.6%	\$72,929
CRESCENT-IROQUOIS	IROQUOIS	Unit	\$230,465	\$258,976	\$28,511	\$219	1.7%	Foundation	36.0%	\$12,001
ALT SCH - JACKSON/PERRY ROE	JACKSON	Regional	\$52,485	\$56,374	\$3,888	\$436	0.0%	Lab & Alternative	0.0%	\$0
SAFE SCH-JACKSON/PERRY ROE	JACKSON	Regional	\$95,428	\$102,497	\$7,070	\$436	0.0%	Lab & Alternative	0.0%	\$0
ALOP - JACKSON/PERRY ROE	JACKSON	Regional	\$65,386	\$70,230	\$4,844	\$436	0.0%	Lab & Alternative	0.0%	\$0
DESOTO CONS SCHOOL DISTRICT 86	JACKSON	Elementary	\$852,764	\$915,848	\$63,084	\$290	3.0%	Foundation	59.1%	\$44,311
CARBONDALE ELEM SCH DIST 95	JACKSON	Elementary	\$2,577,964	\$2,606,554	\$28,590	\$22	0.2%	Alternate Method	79.4%	\$190,168
GIANT CITY C C SCHOOL DIST 130	JACKSON	Elementary	\$554,664	\$616,953	\$62,289	\$270	3.3%	Foundation	42.8%	\$33,233
UNITY POINT C C SCHOOL DIST 140	JACKSON	Elementary	\$2,475,639	\$2,652,903	\$177,264	\$291	3.1%	Foundation	54.1%	\$98,777
CARBONDALE COMM H S DISTRICT 165	JACKSON	High School	\$1,189,218	\$1,343,238	\$154,020	\$162	1.1%	Foundation	61.2%	\$145,857
TRICO COMM UNIT SCH DISTRICT 176	JACKSON	Unit	\$2,655,290	\$2,914,506	\$259,216	\$294	3.6%	Foundation	56.1%	\$166,166
MURPHYSBORO C U SCH DIST 186	JACKSON	Unit	\$8,816,993	\$9,357,361	\$540,368	\$285	2.4%	Foundation	71.1%	\$418,185
ELVERADO C U SCHOOL DIST 196	JACKSON	Unit	\$2,424,288	\$2,555,586	\$131,298	\$287	3.6%	Foundation	63.5%	\$109,854
JASPER COUNTY COMM UNIT DIST 1	JASPER	Unit	\$1,545,021	\$1,752,043	\$207,022	\$158	2.0%	Foundation	44.9%	\$192,938
SPRING GARDEN CONS 178	JEFFERSON	Elementary	\$1,087,190	\$1,156,928	\$69,737	\$292	3.4%	Foundation	51.9%	\$51,696
WOODLAWN UNIT 209	JEFFERSON	Unit	\$1,896,002	\$2,034,140	\$138,137	\$298	2.8%	Foundation	38.4%	\$61,851
BLUFORD UNIT 318	JEFFERSON	Unit	\$1,788,034	\$1,901,440	\$113,406	\$296	3.2%	Foundation	53.3%	\$48,004
WALTONVILLE C U SCHOOL DIST 1	JEFFERSON	Unit	\$1,227,833	\$1,328,596	\$100,763	\$297	3.3%	Foundation	42.3%	\$65,543
ROME COMM CONS SCHOOL DIST 2	JEFFERSON	Elementary	\$1,262,708	\$1,349,127	\$86,419	\$293	4.1%	Foundation	50.9%	\$46,157
FIELD COMM CONS SCHOOL DIST 3	JEFFERSON	Elementary	\$1,175,598	\$1,257,820	\$82,222	\$298	4.1%	Foundation	40.5%	\$45,234
OPDYKE-BELLE-RIVE CC SCH DIST 5	JEFFERSON	Elementary	\$825,709	\$878,395	\$52,686	\$289	3.1%	Foundation	65.4%	\$34,156
GRAND PRAIRIE C C SCH DIST 6	JEFFERSON	Elementary	\$353,459	\$377,432	\$23,973	\$292	3.4%	Foundation	53.9%	\$19,386
MCCLELLAN C C SCHOOL DIST 12	JEFFERSON	Elementary	\$232,641	\$251,366	\$18,725	\$293	3.7%	Foundation	50.6%	\$6,462
SUMMERSVILLE SCHOOL DIST 79	JEFFERSON	Elementary	\$1,052,743	\$1,125,653	\$72,910	\$297	4.1%	Foundation	51.1%	\$24,002
MOUNT VERNON SCHOOL DIST 80	JEFFERSON	Elementary	\$6,410,102	\$6,771,856	\$361,754	\$278	2.0%	Foundation	90.8%	\$280,636

**ILLINOIS STATE BOARD OF EDUCATION**  
**District Detail Report**  
**January 6, 2016**  
**Exhibit G**

Based upon the design of the GSA Formula, school districts with lower amounts of local wealth and higher concentrations of low-income students are to receive a greater amount of GSA on a per pupil basis as compared to school districts with higher amounts of local wealth and lower concentrations of low-income students. Due to the design, the GSA Formula is the most equitable funding mechanism in current statute and it measures a child's need based upon two distinct and separate measures. The Superintendent's Recommendation follows the principle of equitably distributing resources benefitting 77% of the students in school districts with the least amount of local wealth and the highest concentrations of low-income students in alignment with the design of the General State Aid Formula.

Range of Gain/ (Loss)	\$ Per Pupil	% of Operating Revenue
<b>Maxium Loss</b>	<b>\$ (106)</b>	<b>-0.9%</b>
<b>Maxium Gain</b>	<b>\$ 436</b>	<b>5.2%</b>
<b>Median</b>	<b>\$ 270</b>	<b>2.1%</b>

District Name	County	Organization Type	FY 16 Actual Receipts * @ \$6,119 FLEVEL	FY 16 Simulated Receipts @ \$6,327 FLEVEL	Gain / Loss	Gain / Loss Per Student	Gain / Loss as % of Operating Revenue	Formula Type **	Low Income %	Maintenance of Effort ***
BETHEL SCHOOL DISTRICT 82	JEFFERSON	Elementary	\$550,204	\$591,833	\$41,630	\$284	3.4%	Foundation	77.5%	\$30,464
FARRINGTON C C SCHOOL DIST 99	JEFFERSON	Elementary	\$307,481	\$326,983	\$19,502	\$292	3.9%	Foundation	53.4%	\$10,155
MT VERNON TWP H S DIST 201	JEFFERSON	High School	\$3,834,128	\$4,166,646	\$332,519	\$294	2.5%	Foundation	64.1%	\$210,477
JERSEY C U SCH DIST 100	JERSEY	Unit	\$6,353,175	\$7,042,968	\$689,794	\$280	3.4%	Foundation	48.6%	\$338,795
ALT SCH-CAROLL/JODAVIESS/STEPHENS	JO DAVIESS	Regional	\$295,237	\$317,109	\$21,872	\$436	0.0%	Lab & Alternative	0.0%	\$0
SAFE SCH-CARROLL/JO DAVIESS/STEPH	JO DAVIESS	Regional	\$191,503	\$205,691	\$14,187	\$436	0.0%	Lab & Alternative	0.0%	\$0
EAST DUBUQUE UNIT SCH DIST 119	JO DAVIESS	Unit	\$931,077	\$1,049,591	\$118,514	\$191	2.0%	Foundation	33.6%	\$78,467
GALENA UNIT SCHOOL DIST 120	JO DAVIESS	Unit	\$515,513	\$463,176	(\$52,337)	(\$70)	-0.5%	Alternate Method	36.0%	\$113,547
WARREN COMM UNIT SCHOOL DIST 205	JO DAVIESS	Unit	\$887,878	\$989,006	\$101,128	\$260	2.2%	Foundation	40.9%	\$49,850
STOCKTON C U SCHOOL DIST 206	JO DAVIESS	Unit	\$998,566	\$1,115,514	\$116,948	\$219	1.9%	Foundation	40.3%	\$83,083
RIVER RIDGE C U SCH DIST 210	JO DAVIESS	Unit	\$308,552	\$265,243	(\$43,308)	(\$93)	-0.6%	Flat Grant	43.9%	\$81,237
SCALES MOUND C U SCH DISTRICT 211	JO DAVIESS	Unit	\$93,771	\$72,605	(\$21,166)	(\$101)	-0.5%	Flat Grant	27.2%	\$25,848
GOREVILLE COMM UNIT DIST 1	JOHNSON	Unit	\$1,725,805	\$1,887,113	\$161,307	\$296	3.7%	Foundation	43.7%	\$70,159
NEW SIMPSON HILL CONS DIST 32	JOHNSON	Elementary	\$1,046,240	\$1,107,230	\$60,990	\$288	3.3%	Foundation	64.5%	\$32,310
BUNCOMBE CONS SCHOOL DIST 43	JOHNSON	Elementary	\$267,630	\$286,752	\$19,122	\$293	3.0%	Foundation	61.8%	\$10,155
VIENNA SCHOOL DIST 55	JOHNSON	Elementary	\$1,640,819	\$1,750,730	\$109,910	\$292	3.7%	Foundation	56.2%	\$52,619
CYPRESS SCHOOL DIST 64	JOHNSON	Elementary	\$584,760	\$620,098	\$35,338	\$299	3.6%	Foundation	46.7%	\$22,156
VIENNA H S DISTRICT 133	JOHNSON	High School	\$1,266,351	\$1,363,396	\$97,045	\$293	3.2%	Foundation	51.0%	\$54,466
SAFE SCH-KANE ROE	KANE	Regional	\$897,021	\$963,476	\$66,455	\$436	0.0%	Lab & Alternative	0.0%	\$0
ALOP-KANE ROE	KANE	Regional	\$492,042	\$528,494	\$36,452	\$436	0.0%	Lab & Alternative	0.0%	\$0
SCHOOL DISTRICT 46	KANE	Unit	\$120,504,279	\$130,810,563	\$10,306,284	\$289	2.4%	Foundation	64.1%	\$4,796,669
BATAVIA UNIT SCHOOL DIST 101	KANE	Unit	\$3,562,933	\$3,158,843	(\$404,090)	(\$69)	-0.5%	Alternate Method	23.0%	\$798,522
AURORA WEST UNIT SCHOOL DIST 129	KANE	Unit	\$41,118,660	\$44,566,713	\$3,448,052	\$290	2.5%	Foundation	64.2%	\$1,611,814
AURORA EAST UNIT SCHOOL DIST 131	KANE	Unit	\$97,219,688	\$100,618,443	\$3,398,755	\$268	2.1%	Foundation	100.0%	\$1,857,371
COMM UNIT SCH DIST 300	KANE	Unit	\$36,783,568	\$40,990,827	\$4,207,258	\$226	1.9%	Foundation	43.6%	\$2,879,294
CENTRAL COMM UNIT SCH DIST 301	KANE	Unit	\$5,062,316	\$5,743,272	\$680,956	\$194	1.5%	Foundation	14.4%	\$438,495
KANELAND C U SCHOOL DIST 302	KANE	Unit	\$5,653,974	\$6,442,119	\$788,145	\$183	1.4%	Foundation	17.6%	\$540,041
ST CHARLES C U SCHOOL DIST 303	KANE	Unit	\$6,801,878	\$5,945,032	(\$856,847)	(\$70)	-0.5%	Alternate Method	17.0%	\$1,605,352
GENEVA COMM UNIT SCH DIST 304	KANE	Unit	\$3,015,683	\$2,610,200	(\$405,483)	(\$71)	-0.5%	Alternate Method	10.3%	\$794,829
ALT SCH-IROQUOIS/KANKAKEE ROE	KANKAKEE	Regional	\$622,754	\$668,890	\$46,136	\$436	0.0%	Lab & Alternative	0.0%	\$0
SAFE SCH-IROQUOIS/KANKAKEE ROE	KANKAKEE	Regional	\$214,123	\$229,986	\$15,863	\$436	0.0%	Lab & Alternative	0.0%	\$0
MOMENCE COMM UNIT SCH DIST 1	KANKAKEE	Unit	\$3,903,937	\$4,221,785	\$317,848	\$291	2.9%	Foundation	60.2%	\$149,550
HERSCHER COMM UNIT SCH DIST 2	KANKAKEE	Unit	\$2,278,196	\$2,591,162	\$312,967	\$180	1.9%	Foundation	28.1%	\$214,170
MANTENO COMM UNIT SCH DIST 5	KANKAKEE	Unit	\$4,345,714	\$4,844,641	\$498,927	\$255	2.2%	Foundation	34.9%	\$367,412
GRANT PARK C U SCHOOL DIST 6	KANKAKEE	Unit	\$642,337	\$730,211	\$87,874	\$183	1.8%	Foundation	34.2%	\$65,543
BOURBONNAIS SCHOOL DIST 53	KANKAKEE	Elementary	\$4,898,952	\$5,451,845	\$552,893	\$245	2.6%	Foundation	43.1%	\$327,717
BRADLEY SCHOOL DIST 61	KANKAKEE	Elementary	\$4,790,377	\$5,208,985	\$418,608	\$290	2.7%	Foundation	64.0%	\$245,557
KANKAKEE SCHOOL DIST 111	KANKAKEE	Unit	\$29,295,924	\$30,593,254	\$1,297,330	\$277	2.2%	Foundation	96.2%	\$665,589
ST ANNE C C SCHOOL DIST 256	KANKAKEE	Elementary	\$1,061,911	\$1,154,711	\$92,800	\$294	3.1%	Foundation	58.7%	\$48,927
ST GEORGE C C SCHOOL DIST 258	KANKAKEE	Elementary	\$1,197,701	\$1,331,717	\$134,016	\$286	3.5%	Foundation	29.4%	\$61,851
PEMBROKE C C SCHOOL DISTRICT 259	KANKAKEE	Elementary	\$1,924,783	\$1,996,317	\$71,534	\$285	1.8%	Foundation	100.0%	\$26,771
ST ANNE COMM H S DIST 302	KANKAKEE	High School	\$1,116,333	\$1,185,617	\$69,284	\$284	2.0%	Foundation	75.2%	\$35,080
BRADLEY BOURBONNAIS C HS D 307	KANKAKEE	High School	\$4,435,703	\$4,940,906	\$505,203	\$260	2.4%	Foundation	37.6%	\$293,561
NEWARK COMM H S DIST 18	KENDALL	High School	\$104,773	\$92,081	(\$12,692)	(\$71)	-0.5%	Alternate Method	21.7%	\$23,079

**ILLINOIS STATE BOARD OF EDUCATION**  
**District Detail Report**  
**January 6, 2016**  
**Exhibit G**

Based upon the design of the GSA Formula, school districts with lower amounts of local wealth and higher concentrations of low-income students are to receive a greater amount of GSA on a per pupil basis as compared to school districts with higher amounts of local wealth and lower concentrations of low-income students. Due to the design, the GSA Formula is the most equitable funding mechanism in current statute and it measures a child's need based upon two distinct and separate measures. The Superintendent's Recommendation follows the principle of equitably distributing resources benefitting 77% of the students in school districts with the least amount of local wealth and the highest concentrations of low-income students in alignment with the design of the General State Aid Formula.

	Range of Gain/ (Loss)	\$ Per Pupil	% of Operating Revenue
<b>Maximum Loss</b>	<b>\$</b>	<b>(106)</b>	<b>-0.9%</b>
<b>Maximum Gain</b>	<b>\$</b>	<b>436</b>	<b>5.2%</b>
<b>Median</b>	<b>\$</b>	<b>270</b>	<b>2.1%</b>

District Name	County	Organization Type	FY 16 Actual Receipts * @ \$6,119 FLEVEL	FY 16 Simulated Receipts @ \$6,327 FLEVEL	Gain / Loss	Gain / Loss Per Student	Gain / Loss as % of Operating Revenue	Formula Type **	Low Income %	Maintenance of Effort ***
NEWARK COMM CONS SCH DIST 66	KENDALL	Elementary	\$134,385	\$117,838	(\$16,547)	(\$73)	-0.9%	Alternate Method	24.5%	\$34,156
PLANO COMM UNIT SCHOOL DIST 88	KENDALL	Unit	\$9,045,190	\$9,686,763	\$641,573	\$290	2.5%	Foundation	56.6%	\$341,564
LISBON COMM CONS SCH DIST 90	KENDALL	Elementary	\$80,010	\$72,428	(\$7,582)	(\$67)	-0.7%	Alternate Method	33.7%	\$5,539
YORKVILLE COMM UNIT SCH DIST 115	KENDALL	Unit	\$10,929,175	\$12,214,182	\$1,285,007	\$242	2.0%	Foundation	25.3%	\$836,371
OSWEGO COMM UNIT SCHOOL DIST 308	KENDALL	Unit	\$54,302,115	\$59,510,601	\$5,208,486	\$305	3.0%	Foundation	22.7%	\$2,214,628
KNOXVILLE C U SCHOOL DIST 202	KNOX	Unit	\$3,842,188	\$4,164,254	\$322,065	\$297	3.6%	Foundation	40.9%	\$141,241
GALESBURG C U SCHOOL DIST 205	KNOX	Unit	\$15,756,082	\$16,936,093	\$1,180,011	\$287	3.2%	Foundation	69.6%	\$652,664
R O W V A COMM UNIT SCH DIST 208	KNOX	Unit	\$1,362,320	\$1,518,038	\$155,719	\$248	2.6%	Foundation	41.5%	\$82,160
WILLIAMSFIELD C U S DIST 210	KNOX	Unit	\$173,898	\$154,734	(\$19,164)	(\$72)	-0.5%	Alternate Method	34.2%	\$31,387
ABINGDON - AVON CUSD 276	KNOX	Unit	\$3,225,014	\$3,486,237	\$261,223	\$292	3.2%	Foundation	52.4%	\$136,626
SAFE SCH-LAKE ROE	LAKE	Regional	\$440,264	\$472,880	\$32,616	\$436	0.0%	Lab & Alternative	0.0%	\$0
ALOP SCH-LAKE ROE	LAKE	Regional	\$2,272,888	\$2,441,273	\$168,385	\$436	0.0%	Lab & Alternative	0.0%	\$0
WINTHROP HARBOR SCHOOL DIST 1	LAKE	Elementary	\$1,010,826	\$1,131,054	\$120,228	\$218	2.0%	Foundation	37.6%	\$77,544
BEACH PARK C C SCHOOL DIST 3	LAKE	Elementary	\$7,670,168	\$8,333,424	\$663,256	\$294	2.5%	Foundation	56.3%	\$348,026
ZION ELEMENTARY SCHOOL DISTRICT 6	LAKE	Elementary	\$15,271,322	\$15,965,130	\$693,807	\$278	2.0%	Foundation	85.5%	\$396,953
MILLBURN C C SCHOOL DIST 24	LAKE	Elementary	\$2,998,995	\$3,356,571	\$357,576	\$275	2.3%	Foundation	8.4%	\$137,549
EMMONS SCHOOL DISTRICT 33	LAKE	Elementary	\$152,602	\$131,597	(\$21,005)	(\$74)	-0.5%	Alternate Method	20.5%	\$24,925
ANTIOCH C C SCHOOL DISTRICT 34	LAKE	Elementary	\$4,094,303	\$4,626,248	\$531,945	\$197	1.6%	Foundation	29.9%	\$342,487
GRASS LAKE SCHOOL DIST 36	LAKE	Elementary	\$85,812	\$71,671	(\$14,141)	(\$90)	-0.3%	Flat Grant	38.0%	\$32,310
GAVIN SCHOOL DIST 37	LAKE	Elementary	\$1,749,974	\$1,941,244	\$191,270	\$246	2.1%	Foundation	61.1%	\$136,626
BIG HOLLOW SCHOOL DIST 38	LAKE	Elementary	\$3,374,114	\$3,770,373	\$396,260	\$237	2.6%	Foundation	28.3%	\$258,481
LAKE VILLA C C SCHOOL DIST 41	LAKE	Elementary	\$5,830,853	\$6,507,701	\$676,848	\$251	2.4%	Foundation	28.3%	\$435,725
GRAYSLAKE C C SCHOOL DISTRICT 46	LAKE	Elementary	\$9,199,801	\$10,219,470	\$1,019,668	\$285	2.5%	Foundation	30.8%	\$615,739
WOODLAND C C SCHOOL DIST 50	LAKE	Elementary	\$8,006,156	\$9,190,322	\$1,184,165	\$179	1.6%	Foundation	31.2%	\$709,900
GURNEE SCHOOL DIST 56	LAKE	Elementary	\$1,914,472	\$1,994,089	\$79,617	\$39	0.3%	Alternate Method	48.5%	\$317,562
WAUKEGAN C U SCHOOL DIST 60	LAKE	Unit	\$99,689,156	\$103,530,646	\$3,841,490	\$273	2.1%	Foundation	98.1%	\$2,033,691
LAKE BLUFF ELEM SCHOOL DIST 65	LAKE	Elementary	\$285,778	\$204,182	(\$81,597)	(\$103)	-0.5%	Flat Grant	11.3%	\$92,315
LAKE FOREST SCHOOL DIST 67	LAKE	Elementary	\$599,814	\$417,330	(\$182,484)	(\$101)	-0.5%	Flat Grant	4.1%	\$196,630
OAK GROVE SCHOOL DIST 68	LAKE	Elementary	\$273,567	\$188,902	(\$84,665)	(\$105)	-0.6%	Flat Grant	4.3%	\$135,703
LIBERTYVILLE SCHOOL DIST 70	LAKE	Elementary	\$1,355,219	\$1,154,745	(\$200,475)	(\$73)	-0.6%	Alternate Method	6.5%	\$173,552
RONDOUT SCHOOL DIST 72	LAKE	Elementary	\$51,782	\$37,086	(\$14,696)	(\$102)	-0.3%	Flat Grant	11.2%	\$37,849
HAWTHORN C C SCHOOL DIST 73	LAKE	Elementary	\$2,377,690	\$2,120,714	(\$256,976)	(\$71)	-0.6%	Alternate Method	31.6%	\$518,808
MUNDELEIN ELEM SCHOOL DIST 75	LAKE	Elementary	\$3,136,850	\$3,498,078	\$361,228	\$227	1.8%	Foundation	45.6%	\$266,789
DIAMOND LAKE SCHOOL DIST 76	LAKE	Elementary	\$1,353,482	\$1,331,452	(\$22,030)	(\$22)	-0.2%	Alternate Method	65.0%	\$149,550
FREMONT SCHOOL DIST 79	LAKE	Elementary	\$1,140,514	\$988,813	(\$151,701)	(\$70)	-0.6%	Alternate Method	15.8%	\$281,560
LAKE ZURICH C U SCH DIST 95	LAKE	Unit	\$2,815,911	\$2,425,988	(\$389,923)	(\$71)	-0.5%	Alternate Method	14.2%	\$721,900
KILDEER COUNTRYSIDE C C S DIST 96	LAKE	Elementary	\$1,446,755	\$1,223,428	(\$223,327)	(\$76)	-0.5%	Alternate Method	12.0%	\$321,255
APTAKISIC-TRIPP C C S DIST 102	LAKE	Elementary	\$972,053	\$823,755	(\$148,298)	(\$78)	-0.5%	Alternate Method	19.2%	\$253,865
LINCOLNSHIRE-PRAIRIEVIEW S D 103	LAKE	Elementary	\$554,511	\$385,017	(\$169,494)	(\$105)	-0.6%	Flat Grant	5.6%	\$199,400
BANNOCKBURN SCHOOL DIST 106	LAKE	Elementary	\$100,969	\$81,478	(\$19,491)	(\$102)	-0.3%	Flat Grant	34.3%	\$21,232
DEERFIELD SCHOOL DIST 109	LAKE	Elementary	\$961,528	\$671,958	(\$289,569)	(\$103)	-0.6%	Flat Grant	6.0%	\$336,948
NORTH SHORE SD 112	LAKE	Elementary	\$1,723,591	\$1,311,942	(\$411,649)	(\$104)	-0.6%	Flat Grant	25.0%	\$616,662
TOWNSHIP HIGH SCHOOL DIST 113	LAKE	High School	\$1,258,453	\$896,929	(\$361,523)	(\$105)	-0.4%	Flat Grant	12.0%	\$551,118
FOX LAKE GRADE SCHOOL DIST 114	LAKE	Elementary	\$839,313	\$815,819	(\$23,494)	(\$33)	-0.3%	Alternate Method	60.1%	\$132,933

# ILLINOIS STATE BOARD OF EDUCATION

## District Detail Report

### January 6, 2016

### Exhibit G

Based upon the design of the GSA Formula, school districts with lower amounts of local wealth and higher concentrations of low-income students are to receive a greater amount of GSA on a per pupil basis as compared to school districts with higher amounts of local wealth and lower concentrations of low-income students. Due to the design, the GSA Formula is the most equitable funding mechanism in current statute and it measures a child's need based upon two distinct and separate measures. The Superintendent's Recommendation follows the principle of equitably distributing resources benefitting 77% of the students in school districts with the least amount of local wealth and the highest concentrations of low-income students in alignment with the design of the General State Aid Formula.

	Range of Gain/ (Loss)	\$ Per Pupil	% of Operating Revenue
Maxium Loss	\$	(106)	-0.9%
Maxium Gain	\$	436	5.2%
Median	\$	270	2.1%

District Name	County	Organization Type	FY 16 Actual Receipts * @ \$6,119 FLEVEL	FY 16 Simulated Receipts @ \$6,327 FLEVEL	Gain / Loss	Gain / Loss Per Student	Gain / Loss as % of Operating Revenue	Formula Type **	Low Income %	Maintenance of Effort ***
LAKE FOREST COMM H S DISTRICT 115	LAKE	High School	\$546,916	\$380,496	(\$166,420)	(\$105)	-0.4%	Flat Grant	6.1%	\$255,712
ROUND LAKE AREA SCHS - DIST 116	LAKE	Unit	\$43,634,077	\$45,566,659	\$1,932,581	\$282	2.3%	Foundation	86.1%	\$990,536
ANTIOCH COMM HIGH SCH DIST 117	LAKE	High School	\$4,303,982	\$4,851,922	\$547,940	\$212	1.2%	Foundation	21.1%	\$347,103
WAUCONDA COMM UNIT S DIST 118	LAKE	Unit	\$7,977,332	\$8,921,461	\$944,128	\$215	1.9%	Foundation	37.4%	\$578,813
MUNDELEIN CONS HIGH SCH DIST 120	LAKE	High School	\$1,550,170	\$1,410,342	(\$139,828)	(\$66)	-0.4%	Alternate Method	35.6%	\$303,715
WARREN TWP HIGH SCH DIST 121	LAKE	High School	\$5,011,457	\$5,711,889	\$700,431	\$170	1.3%	Foundation	28.0%	\$477,267
GRANT COMM H S DISTRICT 124	LAKE	High School	\$3,233,141	\$3,619,857	\$386,715	\$215	1.5%	Foundation	33.9%	\$225,248
ADLAI E STEVENSON DIST 125	LAKE	High School	\$1,931,733	\$1,642,322	(\$289,411)	(\$75)	-0.3%	Alternate Method	12.2%	\$382,183
ZION-BENTON TWP H S DIST 126	LAKE	High School	\$8,794,558	\$9,496,844	\$702,285	\$292	1.8%	Foundation	56.8%	\$359,104
GRAYSLAKE COMM HIGH SCH DIST 127	LAKE	High School	\$8,356,862	\$9,227,285	\$870,423	\$306	1.8%	Foundation	21.5%	\$380,336
LIBERTYVILLE COMM H SCH DIST 128	LAKE	High School	\$1,494,007	\$1,255,862	(\$238,145)	(\$76)	-0.3%	Alternate Method	11.5%	\$360,950
NORTH CHICAGO SCHOOL DIST 187	LAKE	Unit	\$22,444,374	\$23,377,722	\$933,348	\$282	1.9%	Foundation	99.9%	\$505,884
BARRINGTON C U SCHOOL DIST 220	LAKE	Unit	\$3,960,939	\$3,326,201	(\$634,738)	(\$79)	-0.5%	Alternate Method	17.7%	\$1,460,418
SAFE SCH-LA SALLE ROE	LASALLE	Regional	\$310,965	\$334,002	\$23,038	\$436	0.0%	Lab & Alternative	0.0%	\$0
LELAND COMM UNIT SCH DIST 1	LASALLE	Unit	\$255,261	\$294,135	\$38,874	\$144	1.3%	Foundation	35.7%	\$44,311
COMMUNITY UNIT SCH DIST 2	LASALLE	Unit	\$683,827	\$653,170	(\$30,657)	(\$44)	-0.4%	Alternate Method	52.9%	\$106,162
EARLVILLE COMM UNIT SCH DIST 9	LASALLE	Unit	\$1,006,360	\$1,112,551	\$106,191	\$270	2.3%	Foundation	56.6%	\$73,852
STREATOR TWP H S DIST 40	LASALLE	High School	\$3,283,743	\$3,532,654	\$248,911	\$291	2.5%	Foundation	56.2%	\$157,858
STREATOR ELEM SCHOOL DIST 44	LASALLE	Elementary	\$8,529,061	\$9,020,899	\$491,838	\$289	3.1%	Foundation	74.3%	\$373,874
ALLEN OTTER CREEK CCSD 65	LASALLE	Elementary	\$46,437	\$37,386	(\$9,051)	(\$100)	-0.6%	Flat Grant	33.5%	\$20,309
TONICA COMM CONS SCH DIST 79	LASALLE	Elementary	\$516,227	\$576,034	\$59,807	\$287	2.8%	Foundation	29.3%	\$24,002
DEER PARK C C SCHOOL DIST 82	LASALLE	Elementary	\$72,431	\$67,295	(\$5,135)	(\$61)	-0.5%	Alternate Method	47.9%	\$12,924
GRAND RIDGE C C SCHOOL DIST 95	LASALLE	Elementary	\$168,779	\$152,528	(\$16,251)	(\$60)	-0.6%	Alternate Method	29.4%	\$35,080
LA SALLE-PERU TWP H S D 120	LASALLE	High School	\$1,306,228	\$1,486,803	\$180,575	\$154	1.4%	Foundation	46.1%	\$150,473
LASALLE ELEM SCHOOL DIST 122	LASALLE	Elementary	\$4,682,395	\$4,934,190	\$251,795	\$281	2.8%	Foundation	82.4%	\$178,167
PERU ELEM SCHOOL DISTRICT 124	LASALLE	Elementary	\$1,401,119	\$1,570,992	\$169,873	\$197	2.2%	Foundation	48.6%	\$123,702
OGLESBY ELEM SCH DIST 125	LASALLE	Elementary	\$1,755,423	\$1,895,612	\$140,189	\$295	3.0%	Foundation	46.8%	\$83,083
OTTAWA TWP H S DIST 140	LASALLE	High School	\$1,686,798	\$1,907,351	\$220,553	\$167	1.5%	Foundation	45.5%	\$213,247
OTTAWA ELEM SCHOOL DIST 141	LASALLE	Elementary	\$5,155,791	\$5,698,378	\$542,587	\$286	2.9%	Foundation	56.7%	\$320,332
MARSEILLES ELEM SCHOOL DIST 150	LASALLE	Elementary	\$2,321,965	\$2,471,345	\$149,380	\$286	2.9%	Foundation	67.1%	\$90,468
SENECA TWP H S DIST 160	LASALLE	High School	\$223,932	\$175,440	(\$48,492)	(\$104)	-0.4%	Flat Grant	29.8%	\$42,465
SENECA COMM CONS SCH DIST 170	LASALLE	Elementary	\$262,264	\$216,037	(\$46,228)	(\$99)	-0.6%	Flat Grant	37.2%	\$66,467
DIMMICK C C SCHOOL DIST 175	LASALLE	Elementary	\$43,247	\$32,759	(\$10,488)	(\$100)	-0.4%	Flat Grant	22.7%	\$7,385
WALTHAM C C SCHOOL DIST 185	LASALLE	Elementary	\$138,304	\$122,911	(\$15,393)	(\$69)	-0.7%	Alternate Method	24.6%	\$23,079
WALLACE C C SCHOOL DIST 195	LASALLE	Elementary	\$191,961	\$169,844	(\$22,117)	(\$72)	-0.6%	Alternate Method	27.1%	\$54,466
MILLER TWP CC SCH DIST 210	LASALLE	Elementary	\$141,078	\$128,711	(\$12,367)	(\$59)	-0.8%	Alternate Method	32.2%	\$35,080
RUTLAND C C SCHOOL DIST 230	LASALLE	Elementary	\$50,225	\$44,983	(\$5,242)	(\$78)	-0.4%	Flat Grant	50.4%	\$10,155
MENDOTA TWP H S DIST 280	LASALLE	High School	\$1,311,344	\$1,458,144	\$146,800	\$249	2.0%	Foundation	52.2%	\$60,928
MENDOTA C C SCHOOL DIST 289	LASALLE	Elementary	\$2,959,766	\$3,270,512	\$310,746	\$266	3.3%	Foundation	63.8%	\$238,172
LOSTANT COMM UNIT SCH DIST 425	LASALLE	Unit	\$136,060	\$130,845	(\$5,215)	(\$43)	-0.3%	Alternate Method	56.2%	\$25,848
RED HILL C U SCHOOL DIST 10	LAWRENCE	Unit	\$4,364,992	\$4,646,446	\$281,454	\$299	3.8%	Foundation	45.4%	\$87,699
LAWRENCE CO C U DISTRICT 20	LAWRENCE	Unit	\$5,184,331	\$5,505,584	\$321,253	\$293	3.5%	Foundation	53.8%	\$164,320
SAFE SCH-LEE/OGLE ROE	LEE	Regional	\$217,658	\$233,783	\$16,125	\$436	0.0%	Lab & Alternative	0.0%	\$0
ALOP-LEE/OGLE ROE	LEE	Regional	\$325,691	\$349,820	\$24,129	\$436	0.0%	Lab & Alternative	0.0%	\$0

**ILLINOIS STATE BOARD OF EDUCATION**  
**District Detail Report**  
**January 6, 2016**  
**Exhibit G**

Based upon the design of the GSA Formula, school districts with lower amounts of local wealth and higher concentrations of low-income students are to receive a greater amount of GSA on a per pupil basis as compared to school districts with higher amounts of local wealth and lower concentrations of low-income students. Due to the design, the GSA Formula is the most equitable funding mechanism in current statute and it measures a child's need based upon two distinct and separate measures. The Superintendent's Recommendation follows the principle of equitably distributing resources benefitting 77% of the students in school districts with the least amount of local wealth and the highest concentrations of low-income students in alignment with the design of the General State Aid Formula.

Range of Gain/ (Loss)	\$ Per Pupil	% of Operating Revenue
<b>Maxium Loss</b>	<b>\$ (106)</b>	<b>-0.9%</b>
<b>Maxium Gain</b>	<b>\$ 436</b>	<b>5.2%</b>
<b>Median</b>	<b>\$ 270</b>	<b>2.1%</b>

District Name	County	Organization Type	FY 16 Actual Receipts * @ \$6,119 FLEVEL	FY 16 Simulated Receipts @ \$6,327 FLEVEL	Gain / Loss	Gain / Loss Per Student	Gain / Loss as % of Operating Revenue	Formula Type **	Low Income %	Maintenance of Effort ***
DIXON UNIT SCHOOL DIST 170	LEE	Unit	\$4,688,881	\$5,224,422	\$535,541	\$215	2.3%	Foundation	52.2%	\$398,799
STEWART ELEM SCHOOL DIST 220	LEE	Elementary	\$41,059	\$36,650	(\$4,409)	(\$72)	-0.5%	Alternate Method	37.2%	\$8,308
PAW PAW CUSD 271	LEE	Unit	\$236,939	\$231,227	(\$5,711)	(\$26)	-0.2%	Alternate Method	55.3%	\$30,464
AMBOY COMM UNIT SCHOOL DIST 272	LEE	Unit	\$644,395	\$610,017	(\$34,378)	(\$49)	-0.5%	Alternate Method	48.6%	\$84,006
ASHTON COMM UNIT SCH DIST 275	LEE	Unit	\$558,442	\$639,657	\$81,215	\$155	1.7%	Foundation	38.4%	\$56,312
WOODLAND C U S DIST 5	LIVINGSTON	Unit	\$982,274	\$1,092,157	\$109,884	\$234	2.1%	Foundation	47.6%	\$95,084
TRI POINT C U SCH DIST 6-J	LIVINGSTON	Unit	\$509,923	\$572,938	\$63,015	\$173	1.5%	Foundation	59.2%	\$80,314
PRAIRIE CENTRAL C U SCHOOL DIST 8	LIVINGSTON	Unit	\$5,246,357	\$5,808,555	\$562,198	\$294	3.1%	Foundation	42.5%	\$335,102
FLANAGAN-CORNELL UNIT 74	LIVINGSTON	Unit	\$602,520	\$671,437	\$68,917	\$225	1.7%	Foundation	47.7%	\$57,235
PONTIAC TWP H S DIST 90	LIVINGSTON	High School	\$1,886,468	\$2,092,034	\$205,566	\$302	2.3%	Foundation	43.6%	\$100,623
DWIGHT TWP H S DIST 230	LIVINGSTON	High School	\$580,398	\$648,347	\$67,949	\$242	1.5%	Foundation	34.3%	\$34,156
DWIGHT COMMON SCHOOL DIST 232	LIVINGSTON	Elementary	\$649,278	\$733,385	\$84,107	\$169	1.8%	Foundation	42.0%	\$79,391
ROOKS CREEK C C SCH DIST 425	LIVINGSTON	Elementary	\$30,311	\$26,759	(\$3,552)	(\$73)	-0.5%	Alternate Method	27.9%	\$8,308
CORNELL C C SCH DIST 426	LIVINGSTON	Elementary	\$221,503	\$246,929	\$25,426	\$234	2.1%	Foundation	38.3%	\$20,309
PONTIAC C C SCHOOL DIST 429	LIVINGSTON	Elementary	\$3,563,162	\$3,896,234	\$333,072	\$289	2.8%	Foundation	63.1%	\$250,173
ODELL COMM CONS SCHOOL DIST 435	LIVINGSTON	Elementary	\$378,270	\$419,816	\$41,546	\$299	2.3%	Foundation	55.8%	\$24,925
SAUNEMIN C CONSOL SCH DIST 438	LIVINGSTON	Elementary	\$530,785	\$565,818	\$35,034	\$305	1.9%	Foundation	55.9%	\$21,232
HARTSBURG EMDEN C U S DIST 21	LOGAN	Unit	\$276,281	\$313,030	\$36,749	\$174	1.4%	Foundation	44.1%	\$24,002
MT PULASKI COMM UNIT DIST 23	LOGAN	Unit	\$434,282	\$405,518	(\$28,764)	(\$58)	-0.5%	Alternate Method	45.5%	\$69,236
LINCOLN ELEM SCHOOL DIST 27	LOGAN	Elementary	\$5,364,492	\$5,694,840	\$330,347	\$287	3.0%	Foundation	71.8%	\$185,552
CHESTER-EAST LINCOLN CCS DIST 61	LOGAN	Elementary	\$218,158	\$202,002	(\$16,155)	(\$60)	-0.6%	Alternate Method	43.8%	\$46,157
NEW HOLLAND-MIDDLETOWN E DIST 88	LOGAN	Elementary	\$131,603	\$128,035	(\$3,569)	(\$33)	-0.3%	Alternate Method	60.0%	\$13,847
WEST LINCOLN-BROADWELL E S D #92	LOGAN	Elementary	\$92,888	\$79,186	(\$13,703)	(\$78)	-0.6%	Alternate Method	24.0%	\$24,925
LINCOLN COMM H S DIST 404	LOGAN	High School	\$1,752,656	\$1,946,694	\$194,037	\$249	2.2%	Foundation	47.1%	\$97,854
ALT SCH-MACON/PIATT ROE	MACON	Regional	\$707,638	\$760,063	\$52,425	\$436	0.0%	Lab & Alternative	0.0%	\$0
SAFE SCH-MACON/PIATT ROE	MACON	Regional	\$183,963	\$197,592	\$13,629	\$436	0.0%	Lab & Alternative	0.0%	\$0
ARGENTA-OREANA COMM UNIT SCH D 1	MACON	Unit	\$1,736,208	\$1,945,734	\$209,526	\$232	2.9%	Foundation	22.6%	\$114,470
MAROA FORSYTH C U SCH DIST 2	MACON	Unit	\$1,391,684	\$1,587,878	\$196,194	\$173	2.2%	Foundation	19.4%	\$119,086
MT ZION COMM UNIT SCH DIST 3	MACON	Unit	\$6,162,657	\$6,850,301	\$687,644	\$295	3.8%	Foundation	19.6%	\$234,479
SANGAMON VALLEY CUSD 9	MACON	Unit	\$1,322,487	\$1,475,364	\$152,877	\$231	2.3%	Foundation	39.1%	\$110,778
WARRENSBURG-LATHAM C U DIST 11	MACON	Unit	\$1,867,267	\$2,087,900	\$220,633	\$243	3.1%	Foundation	25.3%	\$84,929
MERIDIAN COMM UNIT SCH DIST 15	MACON	Unit	\$2,487,520	\$2,759,751	\$272,231	\$290	3.4%	Foundation	43.1%	\$111,701
DECATUR SCHOOL DISTRICT 61	MACON	Unit	\$43,750,714	\$45,898,054	\$2,147,340	\$274	2.4%	Foundation	96.7%	\$1,451,186
ALT SCH-CALHOUN/GREENE/JERSY/MACO	MACOUPIN	Regional	\$52,898	\$56,816	\$3,919	\$436	0.0%	Lab & Alternative	0.0%	\$0
SAFE SCH-CALHOUN/GREENE/JERSY/MAC	MACOUPIN	Regional	\$248,642	\$267,063	\$18,420	\$436	0.0%	Lab & Alternative	0.0%	\$0
CARLINVILLE C U SCHOOL DIST 1	MACOUPIN	Unit	\$4,067,700	\$4,474,093	\$406,393	\$296	3.7%	Foundation	44.6%	\$233,556
NORTHWESTERN C U SCH DIST 2	MACOUPIN	Unit	\$1,311,761	\$1,407,331	\$95,570	\$292	2.7%	Foundation	52.8%	\$78,467
MOUNT OLIVE C U SCHOOL DIST 5	MACOUPIN	Unit	\$1,909,973	\$2,054,021	\$144,048	\$298	3.4%	Foundation	46.6%	\$79,391
STAUNTON COMM UNIT SCH DIST 6	MACOUPIN	Unit	\$3,753,232	\$4,088,787	\$335,555	\$303	4.0%	Foundation	47.3%	\$179,090
GILLESPIE COMM UNIT SCH DIST 7	MACOUPIN	Unit	\$6,623,326	\$6,974,443	\$351,117	\$290	3.5%	Foundation	65.2%	\$214,170
BUNKER HILL C U SCHOOL DIST 8	MACOUPIN	Unit	\$2,573,636	\$2,751,964	\$178,328	\$294	3.6%	Foundation	52.1%	\$103,392
SOUTHWESTERN C U SCH DIST 9	MACOUPIN	Unit	\$5,532,699	\$5,980,047	\$447,349	\$301	4.0%	Foundation	39.9%	\$156,012
NORTH MAC CUSD 34	MACOUPIN	Unit	\$5,194,890	\$5,597,477	\$402,587	\$297	3.2%	Foundation	54.6%	\$259,404
SAFE SCH-MADISON ROE	MADISON	Regional	\$302,365	\$324,765	\$22,400	\$436	0.0%	Lab & Alternative	0.0%	\$0

**ILLINOIS STATE BOARD OF EDUCATION**  
**District Detail Report**  
**January 6, 2016**  
**Exhibit G**

Based upon the design of the GSA Formula, school districts with lower amounts of local wealth and higher concentrations of low-income students are to receive a greater amount of GSA on a per pupil basis as compared to school districts with higher amounts of local wealth and lower concentrations of low-income students. Due to the design, the GSA Formula is the most equitable funding mechanism in current statute and it measures a child's need based upon two distinct and separate measures. The Superintendent's Recommendation follows the principle of equitably distributing resources benefitting 77% of the students in school districts with the least amount of local wealth and the highest concentrations of low-income students in alignment with the design of the General State Aid Formula.

	Range of Gain/ (Loss)	\$ Per Pupil	% of Operating Revenue
Maxium Loss	\$	(106)	-0.9%
Maxium Gain	\$	436	5.2%
Median	\$	270	2.1%

District Name	County	Organization Type	FY 16 Actual Receipts * @ \$6,119 FLEVEL	FY 16 Simulated Receipts @ \$6,327 FLEVEL	Gain / Loss	Gain / Loss Per Student	Gain / Loss as % of Operating Revenue	Formula Type **	Low Income %	Maintenance of Effort ***
ROXANA COMM UNIT SCHOOL DIST 1	MADISON	Unit	\$1,610,782	\$1,518,486	(\$92,296)	(\$55)	-0.4%	Alternate Method	53.7%	\$253,865
TRIAD COMM UNIT SCHOOL DIST 2	MADISON	Unit	\$8,114,775	\$9,043,874	\$929,099	\$268	3.6%	Foundation	21.4%	\$508,654
VENICE COMM UNIT SCHOOL DIST 3	MADISON	Unit	\$566,569	\$575,444	\$8,875	\$67	0.3%	Alternate Method	100.0%	\$23,079
HIGHLAND COMM UNIT SCH DIST 5	MADISON	Unit	\$6,405,416	\$7,143,289	\$737,874	\$260	3.1%	Foundation	28.7%	\$521,578
EDWARDSVILLE C U SCHOOL DIST 7	MADISON	Unit	\$7,081,183	\$8,166,742	\$1,085,560	\$154	1.9%	Foundation	20.6%	\$698,822
BETHALTO C U SCHOOL DIST 8	MADISON	Unit	\$9,084,247	\$9,784,193	\$699,946	\$297	3.4%	Foundation	48.4%	\$383,106
GRANITE CITY C U SCHOOL DIST 9	MADISON	Unit	\$20,472,135	\$22,167,158	\$1,695,024	\$288	2.8%	Foundation	71.9%	\$1,204,706
COLLINSVILLE C U SCH DIST 10	MADISON	Unit	\$18,901,751	\$20,659,357	\$1,757,606	\$291	3.1%	Foundation	61.8%	\$974,843
ALTON COMM UNIT SCHOOL DIST 11	MADISON	Unit	\$16,119,027	\$17,765,259	\$1,646,233	\$282	2.8%	Foundation	69.5%	\$1,237,016
MADISON COMM UNIT SCH DIST 12	MADISON	Unit	\$4,475,454	\$4,653,155	\$177,701	\$270	1.9%	Foundation	100.0%	\$133,856
EAST ALTON SCHOOL DISTRICT 13	MADISON	Elementary	\$2,996,804	\$3,192,197	\$195,392	\$283	2.4%	Foundation	75.1%	\$160,627
EAST ALTON-WOOD RIVER C H S D 14	MADISON	High School	\$939,822	\$1,042,853	\$103,031	\$206	2.0%	Foundation	66.9%	\$97,854
WOOD RIVER-HARTFORD ELEM S D 15	MADISON	Elementary	\$1,496,817	\$1,655,802	\$158,985	\$236	2.5%	Foundation	67.6%	\$130,164
RACCOON CONS SCHOOL DIST 1	MARION	Elementary	\$784,084	\$847,773	\$63,690	\$294	3.8%	Foundation	47.5%	\$46,157
KELL CONSOLIDATED SCHOOL DIST 2	MARION	Elementary	\$423,546	\$451,329	\$27,783	\$293	3.4%	Foundation	51.3%	\$23,079
IUKA COMM CONS SCHOOL DIST 7	MARION	Elementary	\$992,932	\$1,053,130	\$60,198	\$295	3.2%	Foundation	61.2%	\$39,695
SELMAVILLE C C SCH DIST 10	MARION	Elementary	\$582,931	\$645,504	\$62,573	\$291	3.7%	Foundation	40.0%	\$25,848
PATOKA COMM UNIT SCH DIST 100	MARION	Unit	\$352,672	\$349,873	(\$2,799)	(\$12)	-0.1%	Alternate Method	69.8%	\$54,466
SALEM SCHOOL DIST 111	MARION	Elementary	\$4,089,902	\$4,364,524	\$274,621	\$292	3.6%	Foundation	59.9%	\$180,014
CENTRAL CITY SCHOOL DIST 133	MARION	Elementary	\$1,261,603	\$1,336,684	\$75,081	\$294	4.0%	Foundation	48.1%	\$74,775
CENTRALIA SCHOOL DIST 135	MARION	Elementary	\$7,310,042	\$7,652,444	\$342,403	\$274	2.5%	Foundation	93.7%	\$360,027
CENTRALIA H S DIST 200	MARION	High School	\$3,645,288	\$3,887,214	\$241,927	\$285	2.3%	Foundation	71.3%	\$167,089
SOUTH CENTRAL COMM UNIT DIST 401	MARION	Unit	\$2,471,857	\$2,657,778	\$185,922	\$294	3.4%	Foundation	61.4%	\$130,164
SANDOVAL C U SCHOOL DIST 501	MARION	Unit	\$2,520,736	\$2,649,831	\$129,096	\$288	3.0%	Foundation	66.8%	\$113,547
SALEM COMM H S DIST 600	MARION	High School	\$2,555,138	\$2,764,447	\$209,309	\$296	3.2%	Foundation	47.9%	\$89,545
ODIN PS DISTRICT 722	MARION	Unit	\$1,481,679	\$1,560,033	\$78,354	\$291	3.1%	Foundation	67.9%	\$43,388
HENRY-SENACHWINE CUSD 5	MARSHALL	Unit	\$489,399	\$462,317	(\$27,082)	(\$53)	-0.4%	Alternate Method	50.4%	\$93,238
MIDLAND COMMUNITY UNIT DIST 7	MARSHALL	Unit	\$928,840	\$1,046,044	\$117,204	\$183	1.7%	Foundation	48.2%	\$90,468
HAVANA COMM UNIT SCHOOL DIST 126	MASON	Unit	\$2,338,206	\$2,591,528	\$253,321	\$265	3.1%	Foundation	53.3%	\$154,165
ILLINI CENTRAL C U SCH DIST 189	MASON	Unit	\$1,861,608	\$2,060,087	\$198,479	\$294	2.7%	Foundation	53.3%	\$157,858
MIDWEST CENTRAL CUSD 191	MASON	Unit	\$3,438,259	\$3,714,264	\$276,005	\$297	3.4%	Foundation	56.0%	\$144,934
MASSAC UNIT DISTRICT #1	MASSAC	Unit	\$8,846,990	\$9,442,403	\$595,413	\$290	3.3%	Foundation	60.0%	\$285,252
JOPPA-MAPLE GROVE UNIT DIST 38	MASSAC	Unit	\$346,625	\$342,652	(\$3,973)	(\$16)	-0.1%	Alternate Method	66.2%	\$31,387
ALT SCH-HANCOCK/MC DONOUGH ROE	MCDONOUGH	Regional	\$229,380	\$246,373	\$16,993	\$436	0.0%	Lab & Alternative	0.0%	\$0
SAFE SCH-HANCOCK/MC DONOUGH ROE	MCDONOUGH	Regional	\$113,394	\$121,795	\$8,401	\$436	0.0%	Lab & Alternative	0.0%	\$0
WEST PRAIRIE	MCDONOUGH	Unit	\$1,187,966	\$1,321,227	\$133,261	\$234	2.1%	Foundation	51.1%	\$119,086
BUSHNELL PRAIRIE CITY CUS D 170	MCDONOUGH	Unit	\$2,996,610	\$3,192,759	\$196,149	\$290	3.5%	Foundation	68.1%	\$142,165
MACOMB COMM UNIT SCH DIST 185	MCDONOUGH	Unit	\$4,573,789	\$5,071,886	\$498,096	\$265	2.5%	Foundation	43.8%	\$301,869
SAFE SCH-MC HENRY ROE	MCHENRY	Regional	\$127,885	\$137,359	\$9,474	\$436	0.0%	Lab & Alternative	0.0%	\$0
NIPPERSINK SCHOOL DISTRICT 2	MCHENRY	Elementary	\$739,180	\$657,776	(\$81,403)	(\$68)	-0.6%	Alternate Method	24.0%	\$146,780
FOX RIVER GROVE CONS S D 3	MCHENRY	Elementary	\$803,999	\$907,234	\$103,235	\$214	1.6%	Foundation	22.6%	\$84,929
JOHNSBURG C U SCHOOL DIST 12	MCHENRY	Unit	\$2,462,829	\$2,807,595	\$344,766	\$178	1.5%	Foundation	28.4%	\$240,018
MCHENRY C C SCHOOL DIST 15	MCHENRY	Elementary	\$6,533,753	\$7,324,410	\$790,656	\$190	1.3%	Foundation	46.1%	\$746,825
RILEY C C SCHOOL DIST 18	MCHENRY	Elementary	\$185,657	\$163,708	(\$21,949)	(\$73)	-0.5%	Alternate Method	27.8%	\$48,004

# ILLINOIS STATE BOARD OF EDUCATION

## District Detail Report

### January 6, 2016

### Exhibit G

Based upon the design of the GSA Formula, school districts with lower amounts of local wealth and higher concentrations of low-income students are to receive a greater amount of GSA on a per pupil basis as compared to school districts with higher amounts of local wealth and lower concentrations of low-income students. Due to the design, the GSA Formula is the most equitable funding mechanism in current statute and it measures a child's need based upon two distinct and separate measures. The Superintendent's Recommendation follows the principle of equitably distributing resources benefiting 77% of the students in school districts with the least amount of local wealth and the highest concentrations of low-income students in alignment with the design of the General State Aid Formula.

	Range of Gain/ (Loss)	\$ Per Pupil	% of Operating Revenue
Maximum Loss	\$	(106)	-0.9%
Maximum Gain	\$	436	5.2%
Median	\$	270	2.1%

District Name	County	Organization Type	FY 16 Actual Receipts * @ \$6,119 FLEVEL	FY 16 Simulated Receipts @ \$6,327 FLEVEL	Gain / Loss	Gain / Loss Per Student	Gain / Loss as % of Operating Revenue	Formula Type **	Low Income %	Maintenance of Effort ***
ALDEN HEBRON SCHOOL DIST 19	MCHENRY	Unit	\$382,077	\$436,956	\$54,879	\$136	1.1%	Foundation	47.1%	\$49,850
CARY C U SCHOOL DIST 26	MCHENRY	Elementary	\$1,895,136	\$2,216,815	\$321,680	\$138	1.3%	Foundation	26.7%	\$430,186
HARRISON SCHOOL DISTRICT 36	MCHENRY	Elementary	\$1,054,860	\$1,157,798	\$102,939	\$292	1.8%	Foundation	75.5%	\$71,082
PRAIRIE GROVE C SCH DIST 46	MCHENRY	Elementary	\$453,247	\$404,013	(\$49,234)	(\$61)	-0.4%	Alternate Method	19.5%	\$132,933
CRYSTAL LAKE C C SCH DIST 47	MCHENRY	Elementary	\$9,368,523	\$10,677,376	\$1,308,853	\$175	1.5%	Foundation	29.2%	\$1,081,928
HARVARD C U SCHOOL DIST 50	MCHENRY	Unit	\$10,223,107	\$10,886,983	\$663,876	\$283	2.4%	Foundation	72.8%	\$264,943
MARENGO COMM HS DIST 154	MCHENRY	High School	\$834,262	\$953,169	\$118,907	\$172	1.2%	Foundation	39.1%	\$77,544
COMMUNITY HIGH SCHOOL DIST 155	MCHENRY	High School	\$12,067,224	\$13,561,980	\$1,494,756	\$235	1.6%	Foundation	17.6%	\$718,208
MCHENRY COMM H S DIST 156	MCHENRY	High School	\$4,005,908	\$4,487,841	\$481,933	\$214	1.6%	Foundation	34.4%	\$331,410
RICHMOND-BURTON COMM H SC D 157	MCHENRY	High School	\$1,145,880	\$1,295,669	\$149,789	\$206	1.1%	Foundation	18.1%	\$62,774
HUNTLEY COMMUNITY SCHOOL DIST 158	MCHENRY	Unit	\$21,395,479	\$23,853,178	\$2,457,699	\$277	2.7%	Foundation	14.9%	\$1,085,620
MARENGO-UNION ELEM CONS DIST 165	MCHENRY	Elementary	\$1,359,851	\$1,529,864	\$170,013	\$174	1.7%	Foundation	55.6%	\$132,933
WOODSTOCK C U SCHOOL DIST 200	MCHENRY	Unit	\$14,749,261	\$16,344,216	\$1,594,956	\$269	2.0%	Foundation	46.5%	\$738,517
SAFE SCH-DE WITT/LIVINGSTON/MCLEAN	MCLEAN	Regional	\$538,519	\$578,414	\$39,896	\$436	0.0%	Lab & Alternative	0.0%	\$0
ALOP-DE WITT/LIVINGSTON/MCLEAN	MCLEAN	Regional	\$747,223	\$802,580	\$55,357	\$436	0.0%	Lab & Alternative	0.0%	\$0
LEROY COMMUNITY UNIT SCH DIST 2	MCLEAN	Unit	\$1,478,790	\$1,655,032	\$176,242	\$242	2.4%	Foundation	21.6%	\$95,084
TRI VALLEY C U SCHOOL DISTRICT 3	MCLEAN	Unit	\$1,660,526	\$1,881,783	\$221,257	\$224	2.2%	Foundation	9.9%	\$157,858
HEYWORTH C U SCH DIST 4	MCLEAN	Unit	\$2,944,095	\$3,220,240	\$276,145	\$307	3.2%	Foundation	22.9%	\$113,547
MCLEAN COUNTY UNIT DIST NO 5	MCLEAN	Unit	\$16,964,496	\$19,213,384	\$2,248,888	\$177	1.9%	Foundation	30.6%	\$1,839,831
LEXINGTON C U SCH DIST 7	MCLEAN	Unit	\$723,749	\$814,905	\$91,156	\$194	1.9%	Foundation	32.0%	\$72,005
OLYMPIA C U SCHOOL DIST 16	MCLEAN	Unit	\$2,544,773	\$2,865,265	\$320,491	\$189	2.0%	Foundation	36.8%	\$276,944
RIDGEVIEW COMM UNIT SCH DIST 19	MCLEAN	Unit	\$413,961	\$380,065	(\$33,896)	(\$64)	-0.5%	Alternate Method	40.3%	\$60,005
BLOOMINGTON SCH DIST 87	MCLEAN	Unit	\$6,607,222	\$6,735,890	\$128,668	\$26	0.2%	Alternate Method	63.3%	\$732,055
ILLINOIS STATE UNIVERSITY LAB SCH	MCLEAN	Labs	\$5,616,276	\$6,032,352	\$416,076	\$436	0.0%	Lab & Alternative	0.0%	\$0
GREENVIEW C U SCH DIST 200	MENARD	Unit	\$535,265	\$594,474	\$59,209	\$248	2.3%	Foundation	45.3%	\$48,004
PORTA COMM UNIT SCHOOL DIST 202	MENARD	Unit	\$1,798,404	\$2,014,296	\$215,892	\$217	2.2%	Foundation	39.4%	\$246,480
ATHENS COMM UNIT SCH DIST 213	MENARD	Unit	\$2,793,118	\$3,095,033	\$301,915	\$303	3.6%	Foundation	29.6%	\$153,242
MERCER COUNTY SD 404	MERCER	Unit	\$3,230,180	\$3,581,098	\$350,918	\$278	3.0%	Foundation	39.9%	\$184,629
ALT SCH-MONROE/RANDOLPH ROE	MONROE	Regional	\$455,108	\$488,824	\$33,716	\$436	0.0%	Lab & Alternative	0.0%	\$0
SAFE SCH-MONROE/RANDOLPH ROE	MONROE	Regional	\$84,766	\$91,046	\$6,280	\$436	0.0%	Lab & Alternative	0.0%	\$0
VALMEYER COMM UNIT SCH DIST 3	MONROE	Unit	\$903,620	\$1,013,071	\$109,451	\$245	3.0%	Foundation	19.1%	\$59,081
COLUMBIA COMM UNIT SCH DIST 4	MONROE	Unit	\$2,728,764	\$3,107,814	\$379,049	\$194	2.4%	Foundation	12.7%	\$186,476
WATERLOO COMM UNIT SCH DIST 5	MONROE	Unit	\$3,803,849	\$4,305,300	\$501,451	\$196	2.5%	Foundation	21.4%	\$364,643
PANHANDLE COMM UNIT SCH DIST 2	MONTGOMERY	Unit	\$1,093,659	\$1,212,961	\$119,302	\$263	2.5%	Foundation	48.5%	\$93,238
HILLSBORO COMM UNIT SCH DIST 3	MONTGOMERY	Unit	\$4,119,144	\$4,557,127	\$437,983	\$277	2.9%	Foundation	57.7%	\$251,096
LITCHFIELD C U SCHOOL DIST 12	MONTGOMERY	Unit	\$5,027,263	\$5,432,725	\$405,462	\$295	3.5%	Foundation	59.5%	\$225,248
NOKOMIS COMM UNIT SCH DIST 22	MONTGOMERY	Unit	\$2,541,910	\$2,709,830	\$167,920	\$291	3.2%	Foundation	67.2%	\$96,930
ALT SCH-BROWN/CASS/MORGAN/SCOTT R	MORGAN	Regional	\$271,203	\$291,295	\$20,092	\$436	0.0%	Lab & Alternative	0.0%	\$0
FRANKLIN C U SCHOOL DISTRICT 1	MORGAN	Unit	\$412,517	\$463,912	\$51,395	\$184	1.5%	Foundation	41.6%	\$56,312
WAVERLY C U SCHOOL DIST 6	MORGAN	Unit	\$866,269	\$961,770	\$95,501	\$263	2.5%	Foundation	46.7%	\$59,081
MEREDOSIA-CHAMBERSBURG CUSD 11	MORGAN	Unit	\$246,690	\$239,277	(\$7,413)	(\$37)	-0.3%	Alternate Method	61.2%	\$36,003
TRIOPIA C U SCHOOL DISTRICT 27	MORGAN	Unit	\$911,449	\$1,011,564	\$100,116	\$284	3.3%	Foundation	31.3%	\$46,157
JACKSONVILLE SCHOOL DIST 117	MORGAN	Unit	\$8,500,091	\$9,379,578	\$879,487	\$280	2.8%	Foundation	64.7%	\$653,588
SULLIVAN C U SCHOOL DIST 300	MOULTRIE	Unit	\$3,397,191	\$3,718,287	\$321,096	\$299	3.7%	Foundation	42.7%	\$134,779

**ILLINOIS STATE BOARD OF EDUCATION**  
**District Detail Report**  
**January 6, 2016**  
**Exhibit G**

Based upon the design of the GSA Formula, school districts with lower amounts of local wealth and higher concentrations of low-income students are to receive a greater amount of GSA on a per pupil basis as compared to school districts with higher amounts of local wealth and lower concentrations of low-income students. Due to the design, the GSA Formula is the most equitable funding mechanism in current statute and it measures a child's need based upon two distinct and separate measures. The Superintendent's Recommendation follows the principle of equitably distributing resources benefitting 77% of the students in school districts with the least amount of local wealth and the highest concentrations of low-income students in alignment with the design of the General State Aid Formula.

	Range of Gain/ (Loss)	\$ Per Pupil	% of Operating Revenue
<b>Maxium Loss</b>	<b>\$</b>	<b>(106)</b>	<b>-0.9%</b>
<b>Maxium Gain</b>	<b>\$</b>	<b>436</b>	<b>5.2%</b>
<b>Median</b>	<b>\$</b>	<b>270</b>	<b>2.1%</b>

District Name	County	Organization Type	FY 16 Actual Receipts * @ \$6,119 FLEVEL	FY 16 Simulated Receipts @ \$6,327 FLEVEL	Gain / Loss	Gain / Loss Per Student	Gain / Loss as % of Operating Revenue	Formula Type **	Low Income %	Maintenance of Effort ***
OKAW Valley CUSD 302	MOULTRIE	Unit	\$877,609	\$982,698	\$105,090	\$213	2.2%	Foundation	41.4%	\$56,312
KINGS CONSOLIDATED SCH DIST 144	OGLE	Elementary	\$95,964	\$92,216	(\$3,748)	(\$43)	-0.4%	Alternate Method	55.3%	\$10,155
CRESTON COMM CONS SCHOOL DIST 161	OGLE	Elementary	\$97,395	\$91,561	(\$5,834)	(\$54)	-0.5%	Alternate Method	47.5%	\$11,078
ROCHELLE TWP HIGH SCH DIST 212	OGLE	High School	\$1,678,527	\$1,873,666	\$195,139	\$213	1.7%	Foundation	44.5%	\$143,088
OREGON C U SCHOOL DIST-220	OGLE	Unit	\$2,819,522	\$3,137,658	\$318,136	\$232	2.4%	Foundation	55.2%	\$188,322
FORRESTVILLE VALLEY C U S D 221	OGLE	Unit	\$1,958,251	\$2,171,712	\$213,461	\$273	3.2%	Foundation	40.3%	\$108,931
POLO COMM UNIT SCHOOL DIST 222	OGLE	Unit	\$1,395,597	\$1,548,853	\$153,255	\$262	2.7%	Foundation	49.9%	\$72,929
MERIDIAN C U SCH DIST 223	OGLE	Unit	\$5,771,549	\$6,302,372	\$530,823	\$305	3.7%	Foundation	29.5%	\$210,477
BYRON COMM UNIT SCHOOL DIST 226	OGLE	Unit	\$604,729	\$459,650	(\$145,079)	(\$100)	-0.6%	Flat Grant	23.6%	\$199,400
ROCHELLE COMM CONS DIST 231	OGLE	Elementary	\$4,311,384	\$4,759,144	\$447,760	\$287	3.1%	Foundation	64.0%	\$281,560
ESWOOD C C DISTRICT 269	OGLE	Elementary	\$80,729	\$76,905	(\$3,824)	(\$44)	-0.4%	Alternate Method	51.5%	\$14,770
ALT SCH-PEORIA ROE	PEORIA	Regional	\$319,212	\$342,860	\$23,648	\$436	0.0%	Lab & Alternative	0.0%	\$0
SAFE SCH-PEORIA ROE	PEORIA	Regional	\$193,565	\$207,905	\$14,340	\$436	0.0%	Lab & Alternative	0.0%	\$0
PLEASANT VALLEY SCH DIST 62	PEORIA	Elementary	\$2,605,755	\$2,728,846	\$123,091	\$276	2.8%	Foundation	88.9%	\$82,160
NORWOOD ELEM SCHOOL DIST 63	PEORIA	Elementary	\$1,358,535	\$1,470,082	\$111,548	\$291	3.2%	Foundation	56.2%	\$60,928
BARTONVILLE SCHOOL DIST 66	PEORIA	Elementary	\$543,049	\$600,257	\$57,208	\$269	2.8%	Foundation	72.0%	\$40,618
OAK GROVE SCHOOL DIST 68	PEORIA	Elementary	\$1,093,580	\$1,201,431	\$107,851	\$297	3.8%	Foundation	40.7%	\$57,235
PLEASANT HILL SCHOOL DIST 69	PEORIA	Elementary	\$1,313,921	\$1,377,005	\$63,084	\$280	3.3%	Foundation	79.4%	\$52,619
MONROE SCHOOL DIST 70	PEORIA	Elementary	\$629,335	\$703,024	\$73,689	\$248	3.3%	Foundation	26.5%	\$29,541
PEORIA SCHOOL DISTRICT 150	PEORIA	Unit	\$49,579,077	\$52,891,012	\$3,311,935	\$275	2.3%	Foundation	91.0%	\$2,294,942
FARMINGTON CENTRAL C U S D 265	PEORIA	Unit	\$3,655,427	\$4,043,182	\$387,755	\$302	3.6%	Foundation	39.7%	\$151,396
BRIMFIELD C U SCHOOL DIST 309	PEORIA	Unit	\$1,081,616	\$1,221,764	\$140,148	\$205	2.4%	Foundation	18.7%	\$71,082
LIMESTONE COMM HIGH SCH DIST 310	PEORIA	High School	\$1,311,414	\$1,477,902	\$166,487	\$171	1.5%	Foundation	44.6%	\$170,782
LIMESTONE WALTERS C C S DIST 316	PEORIA	Elementary	\$101,087	\$88,780	(\$12,306)	(\$69)	-0.8%	Alternate Method	15.3%	\$12,924
IL VALLEY CENTRAL UNIT DIST 321	PEORIA	Unit	\$3,997,769	\$4,467,560	\$469,791	\$235	2.7%	Foundation	35.5%	\$317,562
ELMWOOD C U SCHOOL DISTRICT 322	PEORIA	Unit	\$1,479,458	\$1,648,591	\$169,133	\$267	3.0%	Foundation	22.4%	\$84,006
DUNLAP C U SCHOOL DIST 323	PEORIA	Unit	\$2,260,149	\$1,971,319	(\$288,830)	(\$71)	-0.8%	Alternate Method	12.4%	\$531,732
PEORIA HGHTS C U SCH DIST 325	PEORIA	Unit	\$1,120,884	\$1,254,345	\$133,461	\$184	1.4%	Foundation	58.6%	\$128,317
PRINCEVILLE C U SCH DIST 326	PEORIA	Unit	\$1,714,902	\$1,907,389	\$192,487	\$270	3.0%	Foundation	28.5%	\$84,929
ILLINI BLUFFS CU SCH DIST 327	PEORIA	Unit	\$1,018,797	\$1,163,900	\$145,103	\$162	1.9%	Foundation	27.1%	\$140,318
HOLLIS CONS SCHOOL DIST 328	PEORIA	Elementary	\$35,324	\$26,633	(\$8,691)	(\$93)	-0.6%	Flat Grant	19.2%	\$12,001
TAMAROA SCHOOL DIST 5	PERRY	Elementary	\$601,922	\$633,861	\$31,939	\$287	3.0%	Foundation	64.9%	\$31,387
PINCKNEYVILLE SCH DIST 50	PERRY	Elementary	\$2,008,003	\$2,172,752	\$164,749	\$299	4.2%	Foundation	51.0%	\$80,314
PINCKNEYVILLE COMM H S DIST 101	PERRY	High School	\$1,287,383	\$1,409,097	\$121,714	\$298	3.4%	Foundation	39.3%	\$69,236
COMMUNITY CONS SCH DIST 204	PERRY	Elementary	\$164,540	\$189,262	\$24,722	\$160	2.0%	Foundation	33.4%	\$20,309
DU QUOIN C U SCHOOL DISTRICT 300	PERRY	Unit	\$6,675,183	\$7,067,919	\$392,736	\$289	3.2%	Foundation	62.1%	\$249,250
ARTHUR CUSD 305	PIATT	Unit	\$1,703,681	\$1,913,528	\$209,847	\$187	1.9%	Foundation	55.6%	\$196,630
SAFE SCH-KNOX ROE	PIATT	Regional	\$147,029	\$157,922	\$10,893	\$436	0.0%	Lab & Alternative	0.0%	\$0
BEMENT COMM UNIT SCHOOL DIST 5	PIATT	Unit	\$354,995	\$403,318	\$48,322	\$152	1.5%	Foundation	51.5%	\$71,082
MONTICELLO C U SCHOOL DIST 25	PIATT	Unit	\$780,550	\$668,048	(\$112,502)	(\$74)	-0.7%	Alternate Method	18.5%	\$217,863
DELAND-WELDON C U SCH DIST 57	PIATT	Unit	\$150,868	\$137,886	(\$12,982)	(\$66)	-0.5%	Alternate Method	42.4%	\$31,387
CERRO GORDO C U SCHOOL DIST 100	PIATT	Unit	\$1,266,065	\$1,409,467	\$143,402	\$270	3.3%	Foundation	38.4%	\$55,389
PLEASANT HILL C U SCH DIST 3	PIKE	Unit	\$869,924	\$949,147	\$79,223	\$297	3.1%	Foundation	52.8%	\$61,851
GRIGGSVILLE-PERRY C U SCH DIST 4	PIKE	Unit	\$1,485,479	\$1,598,910	\$113,431	\$292	3.3%	Foundation	53.5%	\$84,006



# ILLINOIS STATE BOARD OF EDUCATION

## District Detail Report

### January 6, 2016

### Exhibit G

Based upon the design of the GSA Formula, school districts with lower amounts of local wealth and higher concentrations of low-income students are to receive a greater amount of GSA on a per pupil basis as compared to school districts with higher amounts of local wealth and lower concentrations of low-income students. Due to the design, the GSA Formula is the most equitable funding mechanism in current statute and it measures a child's need based upon two distinct and separate measures. The Superintendent's Recommendation follows the principle of equitably distributing resources benefitting 77% of the students in school districts with the least amount of local wealth and the highest concentrations of low-income students in alignment with the design of the General State Aid Formula.

	Range of Gain/ (Loss)	\$ Per Pupil	% of Operating Revenue
Maxium Loss	\$	(106)	-0.9%
Maxium Gain	\$	436	5.2%
Median	\$	270	2.1%

District Name	County	Organization Type	FY 16 Actual Receipts * @ \$6,119 FLEVEL	FY 16 Simulated Receipts @ \$6,327 FLEVEL	Gain / Loss	Gain / Loss Per Student	Gain / Loss as % of Operating Revenue	Formula Type **	Low Income %	Maintenance of Effort ***
PIKELAND C U SCH DIST 10	PIKE	Unit	\$4,443,041	\$4,787,652	\$344,611	\$293	3.5%	Foundation	54.1%	\$195,707
WESTERN CUSD 12	PIKE	Unit	\$1,923,062	\$2,075,611	\$152,549	\$297	3.2%	Foundation	60.1%	\$72,005
POPE CO COMM UNIT DIST 1	POPE	Unit	\$1,956,703	\$2,105,339	\$148,635	\$298	3.4%	Foundation	44.9%	\$84,006
CENTURY COMM UNIT SCH DIST 100	PULASKI	Unit	\$2,035,629	\$2,150,518	\$114,889	\$295	3.7%	Foundation	56.2%	\$65,543
MERIDIAN C U SCH DISTRICT 101	PULASKI	Unit	\$3,536,369	\$3,676,455	\$140,085	\$282	1.8%	Foundation	96.4%	\$79,391
PUTNAM CO C U SCHOOL DIST 535	PUTNAM	Unit	\$591,832	\$542,580	(\$49,252)	(\$62)	-0.5%	Alternate Method	40.3%	\$118,163
COULTERVILLE UNIT SCHOOL DIST 1	RANDOLPH	Unit	\$1,039,025	\$1,100,009	\$60,984	\$289	3.2%	Foundation	69.3%	\$34,156
CHESTER N H SCHOOL DIST 122	RANDOLPH	High School	\$131,445	\$142,775	\$11,330	\$301	3.0%	Foundation	57.6%	\$923
RED BUD C U SCHOOL DIST 132	RANDOLPH	Unit	\$637,750	\$573,269	(\$64,481)	(\$71)	-0.6%	Alternate Method	39.2%	\$148,627
PRAIRIE DU ROCHER C C S D 134	RANDOLPH	Elementary	\$706,101	\$751,986	\$45,885	\$299	3.2%	Foundation	44.6%	\$37,849
STEELEVILLE C U SCH DIST 138	RANDOLPH	Unit	\$1,303,472	\$1,420,935	\$117,463	\$299	3.6%	Foundation	37.2%	\$66,467
CHESTER COMM UNIT SCH DIST 139	RANDOLPH	Unit	\$3,518,358	\$3,782,323	\$263,965	\$294	3.7%	Foundation	54.4%	\$181,860
SPARTA C U SCHOOL DIST 140	RANDOLPH	Unit	\$4,595,988	\$4,933,000	\$337,011	\$289	3.1%	Foundation	60.9%	\$197,553
ALT SCH-CLAY/CWFORD/JSPER/LWRNCE/	RICHLAND	Regional	\$130,889	\$140,586	\$9,697	\$436	0.0%	Lab & Alternative	0.0%	\$0
SAFE SCH-CLAY/CWFORD/JSPER/LWRNCE	RICHLAND	Regional	\$84,942	\$91,235	\$6,293	\$436	0.0%	Lab & Alternative	0.0%	\$0
EAST RICHLAND CUSD 1	RICHLAND	Unit	\$8,303,445	\$8,942,175	\$638,729	\$293	3.3%	Foundation	57.8%	\$343,410
SAFE SCH-ROCK ISLAND ROE	ROCK ISLAND	Regional	\$97,645	\$104,750	\$7,105	\$436	0.0%	Lab & Alternative	0.0%	\$0
HAMPTON SCHOOL DISTRICT 29	ROCK ISLAND	Elementary	\$580,709	\$644,984	\$64,275	\$283	3.5%	Foundation	28.9%	\$34,156
UNITED TWP HS DISTRICT 30	ROCK ISLAND	High School	\$3,275,687	\$3,634,892	\$359,205	\$231	2.4%	Foundation	57.9%	\$240,018
SILVIS SCHOOL DISTRICT 34	ROCK ISLAND	Elementary	\$2,047,459	\$2,216,484	\$169,025	\$289	3.1%	Foundation	60.7%	\$96,930
CARBON CLIFF-BARSTOW SCH DIST 36	ROCK ISLAND	Elementary	\$1,789,891	\$1,865,998	\$76,107	\$273	2.5%	Foundation	96.7%	\$44,311
EAST MOLINE SCHOOL DISTRICT 37	ROCK ISLAND	Elementary	\$8,599,142	\$9,311,027	\$711,885	\$284	2.7%	Foundation	72.0%	\$382,183
MOLINE-COAL VALLEY CUSD 40	ROCK ISLAND	Unit	\$16,258,405	\$17,988,507	\$1,730,102	\$259	2.3%	Foundation	59.3%	\$902,837
ROCK ISLAND SCHOOL DISTRICT 41	ROCK ISLAND	Unit	\$23,044,207	\$24,762,986	\$1,718,778	\$285	2.5%	Foundation	70.3%	\$951,764
RIVERDALE C U SCHOOL DIST 100	ROCK ISLAND	Unit	\$1,782,396	\$2,001,847	\$219,451	\$213	2.5%	Foundation	26.1%	\$151,396
SHERRARD COMM UNIT SCH DIST 200	ROCK ISLAND	Unit	\$5,073,040	\$5,549,667	\$476,627	\$302	3.7%	Foundation	29.3%	\$172,628
ROCKRIDGE C U SCHOOL DIST 300	ROCK ISLAND	Unit	\$1,016,303	\$1,179,742	\$163,439	\$148	1.5%	Foundation	18.0%	\$156,935
ALT SCH-EDWD/GLTN/HDIN/POP/SLNE/	SALINE	Regional	\$174,892	\$187,849	\$12,957	\$436	0.0%	Lab & Alternative	0.0%	\$0
SAFE SCH-EDWD/GLTN/HDIN/POP/SLNE/	SALINE	Regional	\$144,143	\$154,822	\$10,679	\$436	0.0%	Lab & Alternative	0.0%	\$0
GALATIA C U SCHOOL DIST 1	SALINE	Unit	\$1,353,880	\$1,472,051	\$118,171	\$295	3.4%	Foundation	46.8%	\$90,468
CARRIER MILLS-STONEFORT CUSD 2	SALINE	Unit	\$2,293,431	\$2,407,024	\$113,592	\$284	2.9%	Foundation	72.6%	\$99,700
HARRISBURG C U SCHOOL DIST 3	SALINE	Unit	\$9,453,455	\$10,008,339	\$554,884	\$289	3.3%	Foundation	63.6%	\$384,952
ELDORADO COMM UNIT DISTRICT 4	SALINE	Unit	\$5,647,109	\$5,950,355	\$303,246	\$286	3.0%	Foundation	67.5%	\$186,476
ALT SCH-SANGAMON ROE	SANGAMON	Regional	\$313,733	\$336,976	\$23,243	\$436	0.0%	Lab & Alternative	0.0%	\$0
SAFE SCH-SANGAMON ROE	SANGAMON	Regional	\$109,271	\$117,366	\$8,095	\$436	0.0%	Lab & Alternative	0.0%	\$0
TRI CITY COMM UNIT SCH DIST 1	SANGAMON	Unit	\$1,001,544	\$1,117,804	\$116,260	\$226	2.5%	Foundation	40.2%	\$108,931
ROCHESTER COMM UNIT SCH DIST 3A	SANGAMON	Unit	\$6,040,760	\$6,716,506	\$675,746	\$303	3.8%	Foundation	12.6%	\$275,098
BALL CHATHAM C U SCHOOL DIST 5	SANGAMON	Unit	\$6,205,453	\$7,030,187	\$824,733	\$192	2.1%	Foundation	18.8%	\$456,957
PLEASANT PLAINS C U SCHOOL DIST 8	SANGAMON	Unit	\$1,547,324	\$1,765,144	\$217,820	\$183	1.8%	Foundation	15.3%	\$125,548
AUBURN COMM UNIT SCHOOL DIST 10	SANGAMON	Unit	\$3,956,878	\$4,308,406	\$351,528	\$300	3.4%	Foundation	40.1%	\$204,015
PAWNEE COMM UNIT SCHOOL DIST 11	SANGAMON	Unit	\$381,504	\$340,812	(\$40,692)	(\$71)	-0.8%	Alternate Method	31.5%	\$111,701
RIVERTON C U SCHOOL DIST 14	SANGAMON	Unit	\$4,935,246	\$5,320,331	\$385,084	\$294	3.3%	Foundation	48.5%	\$283,406
WILLIAMSVILLE C U SCHOOL DIST 15	SANGAMON	Unit	\$3,881,280	\$4,315,806	\$434,526	\$308	3.6%	Foundation	12.4%	\$181,860
COMMUNITY UNIT SCHOOL DIST 16	SANGAMON	Unit	\$589,271	\$556,757	(\$32,515)	(\$41)	-0.4%	Alternate Method	35.7%	\$150,473

**ILLINOIS STATE BOARD OF EDUCATION**  
**District Detail Report**  
**January 6, 2016**  
**Exhibit G**

Based upon the design of the GSA Formula, school districts with lower amounts of local wealth and higher concentrations of low-income students are to receive a greater amount of GSA on a per pupil basis as compared to school districts with higher amounts of local wealth and lower concentrations of low-income students. Due to the design, the GSA Formula is the most equitable funding mechanism in current statute and it measures a child's need based upon two distinct and separate measures. The Superintendent's Recommendation follows the principle of equitably distributing resources benefitting 77% of the students in school districts with the least amount of local wealth and the highest concentrations of low-income students in alignment with the design of the General State Aid Formula.

Range of Gain/ (Loss)	\$ Per Pupil	% of Operating Revenue
<b>Maxium Loss</b>	<b>\$ (106)</b>	<b>-0.9%</b>
<b>Maxium Gain</b>	<b>\$ 436</b>	<b>5.2%</b>
<b>Median</b>	<b>\$ 270</b>	<b>2.1%</b>

District Name	County	Organization Type	FY 16 Actual Receipts * @ \$6,119 FLEVEL	FY 16 Simulated Receipts @ \$6,327 FLEVEL	Gain / Loss	Gain / Loss Per Student	Gain / Loss as % of Operating Revenue	Formula Type **	Low Income %	Maintenance of Effort ***
SPRINGFIELD SCHOOL DISTRICT 186	SANGAMON	Unit	\$39,154,722	\$42,931,984	\$3,777,262	\$281	2.3%	Foundation	80.9%	\$3,119,312
SCHUYLER-INDUSTRY	SCHUYLER	Unit	\$3,249,805	\$3,568,698	\$318,893	\$300	3.5%	Foundation	38.0%	\$126,471
WINCHESTER C U SCH DIST 1	SCOTT	Unit	\$2,334,403	\$2,506,887	\$172,484	\$296	3.4%	Foundation	46.4%	\$106,162
SCOTT-MORGAN C U SCHOOL DIST 2	SCOTT	Unit	\$782,795	\$845,872	\$63,077	\$296	3.4%	Foundation	58.8%	\$40,618
WINDSOR COMM UNIT SCH DIST 1	SHELBY	Unit	\$1,167,731	\$1,269,612	\$101,881	\$292	3.4%	Foundation	52.5%	\$65,543
COWDEN-HERRICK CUD 3A	SHELBY	Unit	\$2,099,032	\$2,215,443	\$116,411	\$289	3.4%	Foundation	60.7%	\$63,697
SHELBYVILLE C U SCHOOL DIST 4	SHELBY	Unit	\$3,843,009	\$4,176,206	\$333,197	\$295	3.5%	Foundation	49.3%	\$145,857
STEWARTSON-STRASBURG CU DIST 5A	SHELBY	Unit	\$1,163,262	\$1,268,101	\$104,838	\$304	3.6%	Foundation	43.7%	\$52,619
CENTRAL A & M C U DIST #21	SHELBY	Unit	\$2,182,061	\$2,415,121	\$233,061	\$302	3.3%	Foundation	42.1%	\$126,471
SAFE SCH-ST CLAIR ROE	ST CLAIR	Regional	\$274,620	\$294,965	\$20,345	\$436	0.0%	Lab & Alternative	0.0%	\$0
LEBANON COMM UNIT SCH DIST 9	ST CLAIR	Unit	\$1,430,684	\$1,587,544	\$156,860	\$273	2.7%	Foundation	46.6%	\$119,086
MASCOUHAH C U DISTRICT 19	ST CLAIR	Unit	\$12,692,246	\$13,736,987	\$1,044,741	\$310	3.1%	Foundation	13.1%	\$525,270
ST LIBORY CONS SCH DIST 30	ST CLAIR	Elementary	\$221,794	\$247,043	\$25,249	\$293	3.3%	Foundation	21.7%	\$12,001
MARISSA C U SCH DIST 40	ST CLAIR	Unit	\$2,411,593	\$2,567,396	\$155,803	\$288	3.0%	Foundation	61.5%	\$120,009
NEW ATHENS C U SCHOOL DIST 60	ST CLAIR	Unit	\$958,799	\$1,069,548	\$110,749	\$226	2.7%	Foundation	39.9%	\$74,775
FREEBURG C C SCHOOL DIST 70	ST CLAIR	Elementary	\$1,153,599	\$1,300,817	\$147,218	\$196	3.1%	Foundation	26.9%	\$106,162
FREEBURG COMM H S DIST 77	ST CLAIR	High School	\$838,866	\$952,864	\$113,998	\$191	1.7%	Foundation	14.1%	\$84,929
SHILOH VILLAGE SCHOOL DIST 85	ST CLAIR	Elementary	\$1,524,717	\$1,693,660	\$168,943	\$303	3.7%	Foundation	28.8%	\$105,239
O FALLON C C SCHOOL DIST 90	ST CLAIR	Elementary	\$6,510,356	\$7,287,921	\$777,565	\$235	3.5%	Foundation	23.0%	\$519,731
CENTRAL SCHOOL DIST 104	ST CLAIR	Elementary	\$528,617	\$497,894	(\$30,723)	(\$55)	-0.6%	Alternate Method	48.4%	\$96,930
PONTIAC-W HOLLIDAY SCH DIST 105	ST CLAIR	Elementary	\$541,625	\$495,286	(\$46,339)	(\$66)	-0.7%	Alternate Method	42.2%	\$92,315
GRANT COMM CONS SCH DIST 110	ST CLAIR	Elementary	\$1,454,095	\$1,615,956	\$161,861	\$268	2.7%	Foundation	57.1%	\$120,932
WOLF BRANCH SCH DIST 113	ST CLAIR	Elementary	\$1,042,129	\$1,195,516	\$153,387	\$184	2.2%	Foundation	15.7%	\$84,006
WHITESIDE SCHOOL DIST 115	ST CLAIR	Elementary	\$2,703,131	\$3,011,834	\$308,703	\$247	3.1%	Foundation	45.6%	\$265,866
HIGH MOUNT SCHOOL DIST 116	ST CLAIR	Elementary	\$1,689,473	\$1,809,035	\$119,562	\$291	3.0%	Foundation	56.0%	\$75,698
BELLEVILLE SCHOOL DIST 118	ST CLAIR	Elementary	\$16,550,274	\$17,577,950	\$1,027,676	\$286	2.7%	Foundation	65.9%	\$803,137
BELLE VALLEY SCHOOL DIST 119	ST CLAIR	Elementary	\$4,027,982	\$4,296,272	\$268,290	\$290	3.6%	Foundation	58.2%	\$213,247
SMITHTON C C SCHOOL DIST 130	ST CLAIR	Elementary	\$1,051,945	\$1,178,456	\$126,511	\$244	3.3%	Foundation	15.2%	\$68,313
MILLSTADT C C SCH DIST 160	ST CLAIR	Elementary	\$810,422	\$932,377	\$121,955	\$159	1.7%	Foundation	27.9%	\$156,012
HARMONY EMGE SCHOOL DIST 175	ST CLAIR	Elementary	\$1,671,900	\$1,852,651	\$180,751	\$246	2.5%	Foundation	55.8%	\$112,624
SIGNAL HILL SCH DIST 181	ST CLAIR	Elementary	\$1,248,924	\$1,344,395	\$95,471	\$292	3.1%	Foundation	56.4%	\$60,005
CAHOKIA COMM UNIT SCH DIST 187	ST CLAIR	Unit	\$26,933,937	\$27,858,817	\$924,880	\$276	2.2%	Foundation	100.0%	\$756,980
BROOKLYN UNIT DISTRICT 188	ST CLAIR	Unit	\$791,564	\$823,161	\$31,597	\$268	1.2%	Foundation	100.0%	\$12,001
EAST ST LOUIS SCHOOL DIST 189	ST CLAIR	Unit	\$46,252,630	\$47,716,991	\$1,464,360	\$268	1.7%	Foundation	100.0%	\$810,523
DUPO COMM UNIT SCH DISTRICT 196	ST CLAIR	Unit	\$4,844,255	\$5,144,587	\$300,332	\$292	3.3%	Foundation	58.8%	\$178,167
BELLEVILLE TWP HS DIST 201	ST CLAIR	High School	\$12,183,432	\$13,501,720	\$1,318,288	\$280	2.7%	Foundation	41.0%	\$816,061
O FALLON TWP HIGH SCH DIST 203	ST CLAIR	High School	\$5,292,497	\$5,912,072	\$619,575	\$262	2.8%	Foundation	19.2%	\$271,405
BRADFORD COMM UNIT SCH DIST 1	STARK	Unit	\$218,087	\$206,909	(\$11,178)	(\$46)	-0.3%	Alternate Method	49.6%	\$32,310
STARK COUNTY C U SCH DIST 100	STARK	Unit	\$1,289,841	\$1,440,505	\$150,663	\$222	2.0%	Foundation	41.1%	\$123,702
FREEPORT SCHOOL DIST 145	STEPHENSON	Unit	\$17,604,520	\$18,682,975	\$1,078,455	\$287	2.4%	Foundation	81.7%	\$551,118
PEARL CITY C U SCH DIST 200	STEPHENSON	Unit	\$1,503,304	\$1,640,146	\$136,841	\$305	3.1%	Foundation	36.9%	\$50,773
DAKOTA COMM UNIT SCH DIST 201	STEPHENSON	Unit	\$2,147,825	\$2,381,096	\$233,270	\$290	3.0%	Foundation	37.5%	\$108,008
LENA WINSLOW C U SCH DIST 202	STEPHENSON	Unit	\$2,119,583	\$2,349,003	\$229,420	\$291	3.1%	Foundation	35.9%	\$84,006
ORANGEVILLE C U SCHOOL DIST 203	STEPHENSON	Unit	\$996,544	\$1,102,566	\$106,022	\$303	2.7%	Foundation	33.9%	\$55,389

**ILLINOIS STATE BOARD OF EDUCATION**  
**District Detail Report**  
**January 6, 2016**  
**Exhibit G**

Based upon the design of the GSA Formula, school districts with lower amounts of local wealth and higher concentrations of low-income students are to receive a greater amount of GSA on a per pupil basis as compared to school districts with higher amounts of local wealth and lower concentrations of low-income students. Due to the design, the GSA Formula is the most equitable funding mechanism in current statute and it measures a child's need based upon two distinct and separate measures. The Superintendent's Recommendation follows the principle of equitably distributing resources benefitting 77% of the students in school districts with the least amount of local wealth and the highest concentrations of low-income students in alignment with the design of the General State Aid Formula.

	Range of Gain/ (Loss)	\$ Per Pupil	% of Operating Revenue
<b>Maxium Loss</b>	<b>\$</b>	<b>(106)</b>	<b>-0.9%</b>
<b>Maxium Gain</b>	<b>\$</b>	<b>436</b>	<b>5.2%</b>
<b>Median</b>	<b>\$</b>	<b>270</b>	<b>2.1%</b>

District Name	County	Organization Type	FY 16 Actual Receipts * @ \$6,119 FLEVEL	FY 16 Simulated Receipts @ \$6,327 FLEVEL	Gain / Loss	Gain / Loss Per Student	Gain / Loss as % of Operating Revenue	Formula Type **	Low Income %	Maintenance of Effort ***
ALT SCH-TAZEWELL ROE	TAZEWELL	Regional	\$31,279	\$33,596	\$2,317	\$436	0.0%	Lab & Alternative	0.0%	\$0
SAFE SCH-TAZEWELL ROE	TAZEWELL	Regional	\$303,778	\$326,283	\$22,505	\$436	0.0%	Lab & Alternative	0.0%	\$0
DISTRICT 50 SCHOOLS	TAZEWELL	Elementary	\$3,038,653	\$3,259,651	\$220,998	\$293	3.3%	Foundation	56.5%	\$144,011
CENTRAL SCHOOL DISTRICT 51	TAZEWELL	Elementary	\$1,900,226	\$2,145,813	\$245,588	\$207	2.9%	Foundation	16.6%	\$136,626
WASHINGTON SCHOOL DIST 52	TAZEWELL	Elementary	\$2,399,309	\$2,668,010	\$268,701	\$291	4.1%	Foundation	25.5%	\$119,086
CREVE COEUR SCHOOL DISTRICT 76	TAZEWELL	Elementary	\$3,283,941	\$3,457,687	\$173,747	\$285	3.3%	Foundation	82.2%	\$138,472
ROBEIN SCHOOL DISTRICT 85	TAZEWELL	Elementary	\$200,510	\$228,569	\$28,059	\$189	1.8%	Foundation	39.8%	\$27,694
EAST PEORIA SCHOOL DISTRICT 86	TAZEWELL	Elementary	\$1,774,577	\$1,707,519	(\$67,058)	(\$42)	-0.4%	Alternate Method	56.2%	\$319,409
RANKIN COMMUNITY SCHOOL DIST 98	TAZEWELL	Elementary	\$329,473	\$347,568	\$18,094	\$85	0.7%	Alternate Method	71.0%	\$33,233
N PEKIN & MARQUETTE HGHT S D 102	TAZEWELL	Elementary	\$2,178,535	\$2,350,581	\$172,046	\$298	3.6%	Foundation	56.5%	\$97,854
PEKIN PUBLIC SCHOOL DIST 108	TAZEWELL	Elementary	\$8,338,456	\$9,219,729	\$881,273	\$262	2.6%	Foundation	60.7%	\$640,664
SOUTH PEKIN SCHOOL DIST 137	TAZEWELL	Elementary	\$1,323,192	\$1,394,815	\$71,624	\$290	3.6%	Foundation	58.1%	\$49,850
PEKIN COMM H S DIST 303	TAZEWELL	High School	\$2,585,759	\$2,907,206	\$321,448	\$172	1.6%	Foundation	50.5%	\$255,712
WASHINGTON COMM H S DIST 308	TAZEWELL	High School	\$2,054,110	\$2,304,462	\$250,352	\$224	1.7%	Foundation	22.8%	\$128,317
EAST PEORIA COMM H S DIST 309	TAZEWELL	High School	\$955,897	\$905,387	(\$50,511)	(\$50)	-0.4%	Alternate Method	49.6%	\$167,089
SPRING LAKE C C SCH DIST 606	TAZEWELL	Elementary	\$229,399	\$254,810	\$25,411	\$306	3.3%	Foundation	24.2%	\$15,693
DEER CREEK-MACKINAW CUSD 701	TAZEWELL	Unit	\$2,997,701	\$3,311,069	\$313,368	\$305	3.5%	Foundation	23.1%	\$145,857
TREMONT COMM UNIT DIST 702	TAZEWELL	Unit	\$2,084,424	\$2,330,742	\$246,318	\$271	3.1%	Foundation	16.4%	\$99,700
DELAVAN COMM UNIT DIST 703	TAZEWELL	Unit	\$879,397	\$979,791	\$100,394	\$232	2.2%	Foundation	42.7%	\$95,084
MORTON C U SCHOOL DISTRICT 709	TAZEWELL	Unit	\$1,532,071	\$1,341,976	(\$190,094)	(\$72)	-0.6%	Alternate Method	19.2%	\$429,263
LICK CREEK C C SCH DISTRICT 16	UNION	Elementary	\$342,349	\$374,980	\$32,632	\$297	3.8%	Foundation	42.4%	\$12,924
COBDEN SCH UNIT DIST 17	UNION	Unit	\$2,963,356	\$3,117,034	\$153,678	\$289	3.3%	Foundation	70.0%	\$85,853
ANNA C C SCH DIST 37	UNION	Elementary	\$2,812,040	\$3,011,517	\$199,477	\$292	4.0%	Foundation	52.2%	\$148,627
JONESBORO C C SCHOOL DIST 43	UNION	Elementary	\$2,152,046	\$2,272,109	\$120,063	\$290	3.7%	Foundation	57.4%	\$88,622
DONGOLA SCH UNIT DIST 66	UNION	Unit	\$1,353,834	\$1,423,935	\$70,102	\$288	2.8%	Foundation	69.1%	\$77,544
ANNA JONESBORO COMM H S DIST 81	UNION	High School	\$1,578,077	\$1,712,822	\$134,745	\$293	3.2%	Foundation	49.9%	\$82,160
SHAWNEE C U SCH DIST 84	UNION	Unit	\$701,253	\$711,868	\$10,615	\$30	0.3%	Alternate Method	81.1%	\$76,621
SAFE SCH-VERMILION ROE	VERMILION	Regional	\$101,083	\$108,571	\$7,489	\$436	0.0%	Lab & Alternative	0.0%	\$0
BISMARCK HENNING C U SCHOOL DIST	VERMILION	Unit	\$2,400,865	\$2,629,254	\$228,390	\$301	3.3%	Foundation	31.9%	\$66,467
WESTVILLE C U SCHOOL DIST 2	VERMILION	Unit	\$6,309,853	\$6,658,830	\$348,977	\$293	3.5%	Foundation	51.6%	\$224,325
GEORGETOWN-RIDGE FARM C U D 4	VERMILION	Unit	\$4,983,871	\$5,272,630	\$288,759	\$291	3.3%	Foundation	67.0%	\$179,090
ROSSVILLE-ALVIN CU SCH DIST 7	VERMILION	Unit	\$1,516,184	\$1,631,433	\$115,249	\$296	3.6%	Foundation	44.8%	\$67,390
POTOMAC C U SCH DIST 10	VERMILION	Unit	\$777,542	\$837,366	\$59,824	\$295	3.6%	Foundation	46.8%	\$28,618
HOPESTON AREA C U SCH DIST 11	VERMILION	Unit	\$6,003,088	\$6,340,469	\$337,381	\$285	3.0%	Foundation	69.8%	\$222,478
ARMSTRONG-ELLIS CONS SCH DIST 61	VERMILION	Elementary	\$67,584	\$61,716	(\$5,868)	(\$76)	-0.5%	Flat Grant	54.8%	\$11,078
OAKWOOD COMM UNIT DIST #76	VERMILION	Unit	\$3,482,895	\$3,765,873	\$282,977	\$298	3.7%	Foundation	43.1%	\$108,931
DANVILLE C C SCHOOL DIST 118	VERMILION	Unit	\$30,939,705	\$32,460,278	\$1,520,573	\$280	2.4%	Foundation	88.5%	\$860,372
ARMSTRONG TWP HS DIST 225	VERMILION	High School	\$27,879	\$23,036	(\$4,843)	(\$82)	-0.2%	Flat Grant	34.0%	\$4,616
SALT FORK CUD 512	VERMILION	Unit	\$2,349,280	\$2,603,360	\$254,080	\$298	3.3%	Foundation	37.5%	\$127,394
ALLEDALE C C SCHOOL DIST 17	WABASH	Unit	\$628,329	\$672,021	\$43,692	\$292	3.4%	Foundation	52.8%	\$29,541
WABASH C U SCH DIST 348	WABASH	Unit	\$5,095,347	\$5,527,465	\$432,118	\$298	3.6%	Foundation	49.0%	\$252,942
ALT SCH-HENDERSON/MERCER/WARREN R	WARREN	Regional	\$158,928	\$170,702	\$11,774	\$436	0.0%	Lab & Alternative	0.0%	\$0
MONMOUTH-ROSEVILLE	WARREN	Unit	\$7,211,946	\$7,654,601	\$442,655	\$286	3.2%	Foundation	68.1%	\$220,632
UNITED CUSD 304	WARREN	Unit	\$1,220,306	\$1,372,799	\$152,492	\$174	1.7%	Foundation	49.3%	\$137,549

# ILLINOIS STATE BOARD OF EDUCATION

## District Detail Report

### January 6, 2016

### Exhibit G

Based upon the design of the GSA Formula, school districts with lower amounts of local wealth and higher concentrations of low-income students are to receive a greater amount of GSA on a per pupil basis as compared to school districts with higher amounts of local wealth and lower concentrations of low-income students. Due to the design, the GSA Formula is the most equitable funding mechanism in current statute and it measures a child's need based upon two distinct and separate measures. The Superintendent's Recommendation follows the principle of equitably distributing resources benefitting 77% of the students in school districts with the least amount of local wealth and the highest concentrations of low-income students in alignment with the design of the General State Aid Formula.

	Range of Gain/ (Loss)	\$ Per Pupil	% of Operating Revenue
Maxium Loss	\$	(106)	-0.9%
Maxium Gain	\$	436	5.2%
Median	\$	270	2.1%

District Name	County	Organization Type	FY 16 Actual Receipts * @ \$6,119 FLEVEL	FY 16 Simulated Receipts @ \$6,327 FLEVEL	Gain / Loss	Gain / Loss Per Student	Gain / Loss as % of Operating Revenue	Formula Type **	Low Income %	Maintenance of Effort ***
OAKDALE C C SCHOOL DISTRICT 1	WASHINGTON	Elementary	\$262,863	\$285,976	\$23,113	\$296	3.6%	Foundation	50.2%	\$11,078
WEST WASHINGTON CO C U DIST 10	WASHINGTON	Unit	\$2,047,708	\$2,209,156	\$161,448	\$303	3.6%	Foundation	35.5%	\$103,392
IRVINGTON C C SCH DISTRICT 11	WASHINGTON	Elementary	\$193,000	\$211,878	\$18,878	\$302	2.8%	Foundation	75.1%	\$11,078
ASHLEY C C SCH DISTRICT 15	WASHINGTON	Elementary	\$495,165	\$536,192	\$41,028	\$292	3.0%	Foundation	78.6%	\$33,233
NASHVILLE C C SCH DISTRICT 49	WASHINGTON	Elementary	\$825,569	\$929,239	\$103,670	\$193	2.2%	Foundation	45.8%	\$118,163
NASHVILLE COMM H S DISTRICT 99	WASHINGTON	High School	\$754,750	\$845,381	\$90,632	\$237	2.5%	Foundation	31.6%	\$61,851
NEW HOPE C C SCHOOL DIST 6	WAYNE	Elementary	\$815,645	\$871,405	\$55,760	\$301	4.2%	Foundation	37.6%	\$24,002
GEFF C C SCHOOL DISTRICT 14	WAYNE	Elementary	\$637,637	\$667,076	\$29,439	\$288	3.5%	Foundation	76.7%	\$14,770
JASPER COMM CONS SCHOOL DIST 17	WAYNE	Elementary	\$858,599	\$905,296	\$46,697	\$290	3.4%	Foundation	56.8%	\$38,772
WAYNE CITY C U SCHOOL DIST 100	WAYNE	Unit	\$2,179,123	\$2,333,961	\$154,837	\$299	3.7%	Foundation	43.0%	\$85,853
FAIRFIELD PUBLIC SCHOOL DIST 112	WAYNE	Elementary	\$2,894,230	\$3,070,827	\$176,596	\$289	3.4%	Foundation	58.7%	\$134,779
NORTH WAYNE C U SCHOOL DIST 200	WAYNE	Unit	\$1,688,265	\$1,812,788	\$124,523	\$298	3.4%	Foundation	40.4%	\$76,621
FAIRFIELD COMM H S DIST 225	WAYNE	High School	\$1,844,544	\$1,971,772	\$127,227	\$295	3.4%	Foundation	46.1%	\$55,389
GRAYVILLE C U SCHOOL DIST 1	WHITE	Unit	\$1,428,991	\$1,519,795	\$90,805	\$293	3.4%	Foundation	49.6%	\$48,927
NORRIS CITY-OMAHA-ENFIELD CUSD 3	WHITE	Unit	\$3,037,612	\$3,233,511	\$195,898	\$292	3.5%	Foundation	59.7%	\$116,316
CARMI-WHITE COUNTY C U S DIST 5	WHITE	Unit	\$4,405,352	\$4,763,465	\$358,113	\$291	3.0%	Foundation	56.9%	\$257,558
ERIE COMM UNIT SCH DIST 1	WHITESIDE	Unit	\$286,681	\$227,489	(\$59,192)	(\$100)	-0.5%	Flat Grant	30.9%	\$100,623
RIVER BEND COMM UNIT DIST 2	WHITESIDE	Unit	\$2,264,067	\$2,513,839	\$249,771	\$279	3.3%	Foundation	32.3%	\$131,087
PROPHETSTOWN-LYNDON-TAMPICO CUSD3	WHITESIDE	Unit	\$2,369,514	\$2,601,722	\$232,208	\$294	3.2%	Foundation	49.9%	\$167,089
STERLING C U DIST 5	WHITESIDE	Unit	\$9,821,464	\$10,711,219	\$889,755	\$289	3.1%	Foundation	58.8%	\$618,508
MORRISON COMM UNIT SCH DIST 6	WHITESIDE	Unit	\$2,800,997	\$3,104,081	\$303,084	\$301	3.8%	Foundation	34.6%	\$144,934
ROCK FALLS ELEMENTARY SCH DIST 13	WHITESIDE	Elementary	\$5,935,945	\$6,205,367	\$269,421	\$278	2.8%	Foundation	85.2%	\$214,170
EAST COLOMA - NELSON CESD 20	WHITESIDE	Elementary	\$655,495	\$726,123	\$70,628	\$257	2.8%	Foundation	52.3%	\$52,619
MONTMORENCY C C SCH DIST 145	WHITESIDE	Elementary	\$852,222	\$943,977	\$91,755	\$305	4.2%	Foundation	30.6%	\$40,618
ROCK FALLS TWP H S DIST 301	WHITESIDE	High School	\$2,284,705	\$2,465,411	\$180,707	\$292	2.4%	Foundation	61.0%	\$102,469
ALT SCH-GRUNDY/KENDALL ROE	WILL	Regional	\$321,627	\$345,454	\$23,827	\$436	0.0%	Lab & Alternative	0.0%	\$0
ALT SCH-WILL ROE	WILL	Regional	\$118,224	\$126,983	\$8,759	\$436	0.0%	Lab & Alternative	0.0%	\$0
SAFE SCH-WILL ROE	WILL	Regional	\$541,464	\$581,578	\$40,114	\$436	0.0%	Lab & Alternative	0.0%	\$0
ALOP-WILL ROE	WILL	Regional	\$105,147	\$112,937	\$7,790	\$436	0.0%	Lab & Alternative	0.0%	\$0
CHANNAHON SCHOOL DISTRICT 17	WILL	Elementary	\$495,294	\$370,852	(\$124,441)	(\$99)	-0.7%	Flat Grant	20.4%	\$124,625
TROY COMM CONS SCH DIST 30C	WILL	Elementary	\$3,577,584	\$4,150,395	\$572,812	\$137	1.3%	Foundation	36.9%	\$468,035
HOMER COMM CONS SCH DIST 33C	WILL	Elementary	\$1,980,449	\$1,742,584	(\$237,865)	(\$71)	-0.5%	Alternate Method	22.6%	\$560,350
LARAWAY C C SCHOOL DIST 70C	WILL	Elementary	\$828,444	\$837,444	\$9,000	\$25	0.1%	Flat Grant	88.2%	\$67,390
UNION SCHOOL DIST 81	WILL	Elementary	\$103,386	\$95,409	(\$7,977)	(\$75)	-0.2%	Flat Grant	57.4%	\$21,232
ROCKDALE SCHOOL DISTRICT 84	WILL	Elementary	\$546,411	\$550,748	\$4,336	\$15	0.1%	Alternate Method	79.6%	\$30,464
JOLIET SCHOOL DIST 86	WILL	Elementary	\$69,444,603	\$72,430,287	\$2,985,684	\$275	2.4%	Foundation	91.7%	\$1,416,107
CHANEY-MONGE SCH DISTRICT 88	WILL	Elementary	\$1,915,175	\$2,043,395	\$128,220	\$283	2.5%	Foundation	74.2%	\$75,698
RICHLAND SCHOOL DIST 88A	WILL	Elementary	\$784,830	\$735,613	(\$49,217)	(\$56)	-0.6%	Alternate Method	47.1%	\$103,392
FAIRMONT SCHOOL DISTRICT 89	WILL	Elementary	\$1,167,468	\$1,230,988	\$63,519	\$258	1.3%	Foundation	100.0%	\$73,852
TAFT SCHOOL DISTRICT 90	WILL	Elementary	\$694,514	\$770,964	\$76,450	\$245	2.7%	Foundation	49.3%	\$58,158
LOCKPORT SCHOOL DIST 91	WILL	Elementary	\$716,049	\$811,714	\$95,665	\$164	1.5%	Foundation	41.1%	\$106,162
WILL COUNTY SCHOOL DISTRICT 92	WILL	Elementary	\$906,554	\$785,754	(\$120,801)	(\$76)	-0.5%	Alternate Method	29.9%	\$209,554
MANHATTAN SCHOOL DIST 114	WILL	Elementary	\$2,498,524	\$2,802,644	\$304,120	\$235	2.3%	Foundation	17.3%	\$206,785
NEW LENOX SCHOOL DIST 122	WILL	Elementary	\$3,502,108	\$4,147,954	\$645,847	\$130	1.3%	Foundation	16.7%	\$660,973

# ILLINOIS STATE BOARD OF EDUCATION

## District Detail Report

### January 6, 2016

### Exhibit G

Based upon the design of the GSA Formula, school districts with lower amounts of local wealth and higher concentrations of low-income students are to receive a greater amount of GSA on a per pupil basis as compared to school districts with higher amounts of local wealth and lower concentrations of low-income students. Due to the design, the GSA Formula is the most equitable funding mechanism in current statute and it measures a child's need based upon two distinct and separate measures. The Superintendent's Recommendation follows the principle of equitably distributing resources benefitting 77% of the students in school districts with the least amount of local wealth and the highest concentrations of low-income students in alignment with the design of the General State Aid Formula.

	Range of Gain/ (Loss)	\$ Per Pupil	% of Operating Revenue
Maxium Loss	\$	(106)	-0.9%
Maxium Gain	\$	436	5.2%
Median	\$	270	2.1%

District Name	County	Organization Type	FY 16 Actual Receipts * @ \$6,119 FLEVEL	FY 16 Simulated Receipts @ \$6,327 FLEVEL	Gain / Loss	Gain / Loss Per Student	Gain / Loss as % of Operating Revenue	Formula Type **	Low Income %	Maintenance of Effort ***
FRANKFORT C C SCH DIST 157C	WILL	Elementary	\$1,202,671	\$1,033,133	(\$169,538)	(\$72)	-0.6%	Alternate Method	9.7%	\$288,945
MOKENA SCHOOL DIST 159	WILL	Elementary	\$904,275	\$787,346	(\$116,929)	(\$74)	-0.7%	Alternate Method	22.0%	\$193,861
SUMMIT HILL SCHOOL DIST 161	WILL	Elementary	\$1,851,652	\$1,631,928	(\$219,724)	(\$68)	-0.7%	Alternate Method	17.5%	\$390,491
BEECHER C U SCH DIST 200U	WILL	Unit	\$1,444,023	\$1,633,198	\$189,175	\$192	1.8%	Foundation	29.4%	\$134,779
CRETE MONEE C U SCHOOL DIST 201U	WILL	Unit	\$12,289,992	\$13,576,822	\$1,286,830	\$284	2.2%	Foundation	58.9%	\$782,828
PLAINFIELD SCHOOL DIST 202	WILL	Unit	\$74,684,313	\$82,554,738	\$7,870,425	\$305	3.2%	Foundation	27.0%	\$3,788,593
ELWOOD C C SCH DIST 203	WILL	Elementary	\$245,200	\$273,042	\$27,842	\$75	0.7%	Alternate Method	29.0%	\$49,850
JOLIET TWP HS DIST 204	WILL	High School	\$8,733,828	\$8,832,327	\$98,499	\$17	0.1%	Alternate Method	67.6%	\$946,225
LOCKPORT TWP HS DIST 205	WILL	High School	\$2,246,577	\$1,998,178	(\$248,399)	(\$71)	-0.5%	Alternate Method	28.9%	\$506,807
PEOTONE C U SCH DIST 207U	WILL	Unit	\$1,037,897	\$938,560	(\$99,337)	(\$62)	-0.7%	Alternate Method	29.9%	\$246,480
WILMINGTON C U SCH DIST 209U	WILL	Unit	\$1,959,516	\$2,208,051	\$248,534	\$183	1.9%	Foundation	41.6%	\$214,170
LINCOLN WAY COMM H S DIST 210	WILL	High School	\$6,045,096	\$7,076,237	\$1,031,141	\$148	1.3%	Foundation	13.0%	\$652,664
REED CUSTER C U SCH DIST 255U	WILL	Unit	\$923,655	\$781,053	(\$142,602)	(\$96)	-0.6%	Flat Grant	41.3%	\$216,016
VALLEY VIEW CUSD #365U	WILL	Unit	\$36,675,819	\$40,678,642	\$4,002,824	\$245	1.8%	Foundation	56.2%	\$2,458,339
JOHNSTON CITY C U SCH DIST 1	WILLIAMSON	Unit	\$4,959,892	\$5,268,972	\$309,080	\$286	3.5%	Foundation	66.8%	\$220,632
MARION COMM UNIT SCH DIST 2	WILLIAMSON	Unit	\$9,180,365	\$10,154,870	\$974,504	\$264	3.0%	Foundation	56.2%	\$665,589
CRAB ORCHARD C U SCH DIST 3	WILLIAMSON	Unit	\$1,815,118	\$1,949,927	\$134,809	\$296	3.7%	Foundation	43.2%	\$72,005
HERRIN C U SCH DIST 4	WILLIAMSON	Unit	\$11,124,265	\$11,767,630	\$643,365	\$286	3.1%	Foundation	69.4%	\$420,955
CARTERVILLE C U SCH DIST 5	WILLIAMSON	Unit	\$7,655,169	\$8,249,175	\$594,007	\$297	4.0%	Foundation	42.1%	\$314,793
ALT SCH-BOONE/WINNEBAGO ROE	WINNEBAGO	Regional	\$162,934	\$175,005	\$12,071	\$436	0.0%	Lab & Alternative	0.0%	\$0
SAFE SCH-BOONE/WINNEBAGO ROE	WINNEBAGO	Regional	\$766,190	\$822,953	\$56,762	\$436	0.0%	Lab & Alternative	0.0%	\$0
ALOP-BOONE/WINNEBAGO ROE	WINNEBAGO	Regional	\$973,599	\$1,045,727	\$72,128	\$436	0.0%	Lab & Alternative	0.0%	\$0
HARLEM UNIT DIST 122	WINNEBAGO	Unit	\$22,182,130	\$24,064,117	\$1,881,986	\$293	2.5%	Foundation	57.4%	\$1,004,383
KINNIKINNICK C C SCH DIST 131	WINNEBAGO	Elementary	\$3,660,192	\$4,103,896	\$443,704	\$249	2.8%	Foundation	24.3%	\$265,866
PRAIRIE HILL C C SCH DIST 133	WINNEBAGO	Elementary	\$1,880,302	\$2,091,904	\$211,602	\$288	3.5%	Foundation	19.0%	\$81,237
SHIRLAND C C SCHOOL DIST 134	WINNEBAGO	Elementary	\$86,864	\$88,464	\$1,600	\$13	0.1%	Alternate Method	35.1%	\$21,232
ROCKTON SCH DIST 140	WINNEBAGO	Elementary	\$3,748,008	\$4,160,699	\$412,691	\$289	3.3%	Foundation	28.7%	\$178,167
ROCKFORD SCHOOL DIST 205	WINNEBAGO	Unit	\$113,350,174	\$120,312,557	\$6,962,383	\$278	2.1%	Foundation	85.4%	\$3,884,600
HONONEGAH COMM H S DIST 207	WINNEBAGO	High School	\$4,683,522	\$5,217,622	\$534,100	\$271	2.3%	Foundation	21.1%	\$229,863
SOUTH BELOIT C U SCH DIST 320	WINNEBAGO	Unit	\$3,714,417	\$3,979,857	\$265,440	\$286	2.7%	Foundation	69.9%	\$135,703
PECATONICA C U SCH DIST 321	WINNEBAGO	Unit	\$2,384,633	\$2,648,105	\$263,472	\$301	3.0%	Foundation	28.6%	\$130,164
DURAND C U SCH DIST 322	WINNEBAGO	Unit	\$1,039,933	\$1,167,545	\$127,612	\$226	1.6%	Foundation	28.5%	\$68,313
WINNEBAGO C U SCH DIST 323	WINNEBAGO	Unit	\$3,769,467	\$4,188,571	\$419,104	\$300	2.7%	Foundation	29.1%	\$207,708
METAMORA C C SCH DIST 1	WOODFORD	Elementary	\$1,545,144	\$1,733,178	\$188,034	\$228	3.2%	Foundation	21.1%	\$94,161
RIVERVIEW C C SCHOOL DISTRICT 2	WOODFORD	Elementary	\$361,048	\$404,266	\$43,218	\$200	1.8%	Foundation	44.3%	\$43,388
FIELDCREST CUSD #6	WOODFORD	Unit	\$2,324,776	\$2,584,904	\$260,129	\$242	2.2%	Foundation	45.6%	\$145,857
EL PASO-GRIDLEY CUSD 11	WOODFORD	Unit	\$2,229,154	\$2,491,882	\$262,728	\$231	2.4%	Foundation	33.6%	\$144,934
LOWPOINT-WASHBURN C U S DIST 21	WOODFORD	Unit	\$878,141	\$973,575	\$95,435	\$269	2.5%	Foundation	53.3%	\$48,927
ROANOKE BENSON C U S DIST 60	WOODFORD	Unit	\$785,514	\$887,280	\$101,766	\$195	1.9%	Foundation	31.4%	\$65,543
GERMANTOWN HILLS SCHOOL DIST 69	WOODFORD	Elementary	\$1,835,027	\$2,052,951	\$217,924	\$252	3.4%	Foundation	15.4%	\$76,621
METAMORA TWP H S DIST 122	WOODFORD	High School	\$1,855,356	\$2,079,194	\$223,838	\$245	2.0%	Foundation	15.7%	\$83,083
EUREKA C U DIST 140	WOODFORD	Unit	\$3,404,485	\$3,798,128	\$393,643	\$253	2.9%	Foundation	25.7%	\$139,395
			<b>\$5,020,752,136</b>	<b>\$5,332,994,114</b>	<b>\$312,241,978</b>	<b>\$179,399</b>				<b>\$273,714,748</b>

**ILLINOIS STATE BOARD OF EDUCATION  
District Detail Report  
January 6, 2016  
Exhibit G**

Based upon the design of the GSA Formula, school districts with lower amounts of local wealth and higher concentrations of low-income students are to receive a greater amount of GSA on a per pupil basis as compared to school districts with higher amounts of local wealth and lower concentrations of low-income students. Due to the design, the GSA Formula is the most equitable funding mechanism in current statute and it measures a child's need based upon two distinct and separate measures. The Superintendent's Recommendation follows the principle of equitably distributing resources benefiting 77% of the students in school districts with the least amount of local wealth and the highest concentrations of low-income students in alignment with the design of the General State Aid Formula.

	Range of Gain/ (Loss)	\$ Per Pupil	% of Operating Revenue
Maxium Loss	\$	(106)	-0.9%
Maxium Gain	\$	436	5.2%
Median	\$	270	2.1%

District Name	County	Organization Type	FY 16 Actual Receipts * @ \$6,119 FLEVEL	FY 16 Simulated Receipts @ \$6,327 FLEVEL	Gain / Loss	Gain / Loss Per Student	Gain / Loss as % of Operating Revenue	Formula Type **	Low Income %	Maintenance of Effort ***
---------------	--------	-------------------	---	--	-------------	-------------------------	---------------------------------------	-----------------	--------------	---------------------------

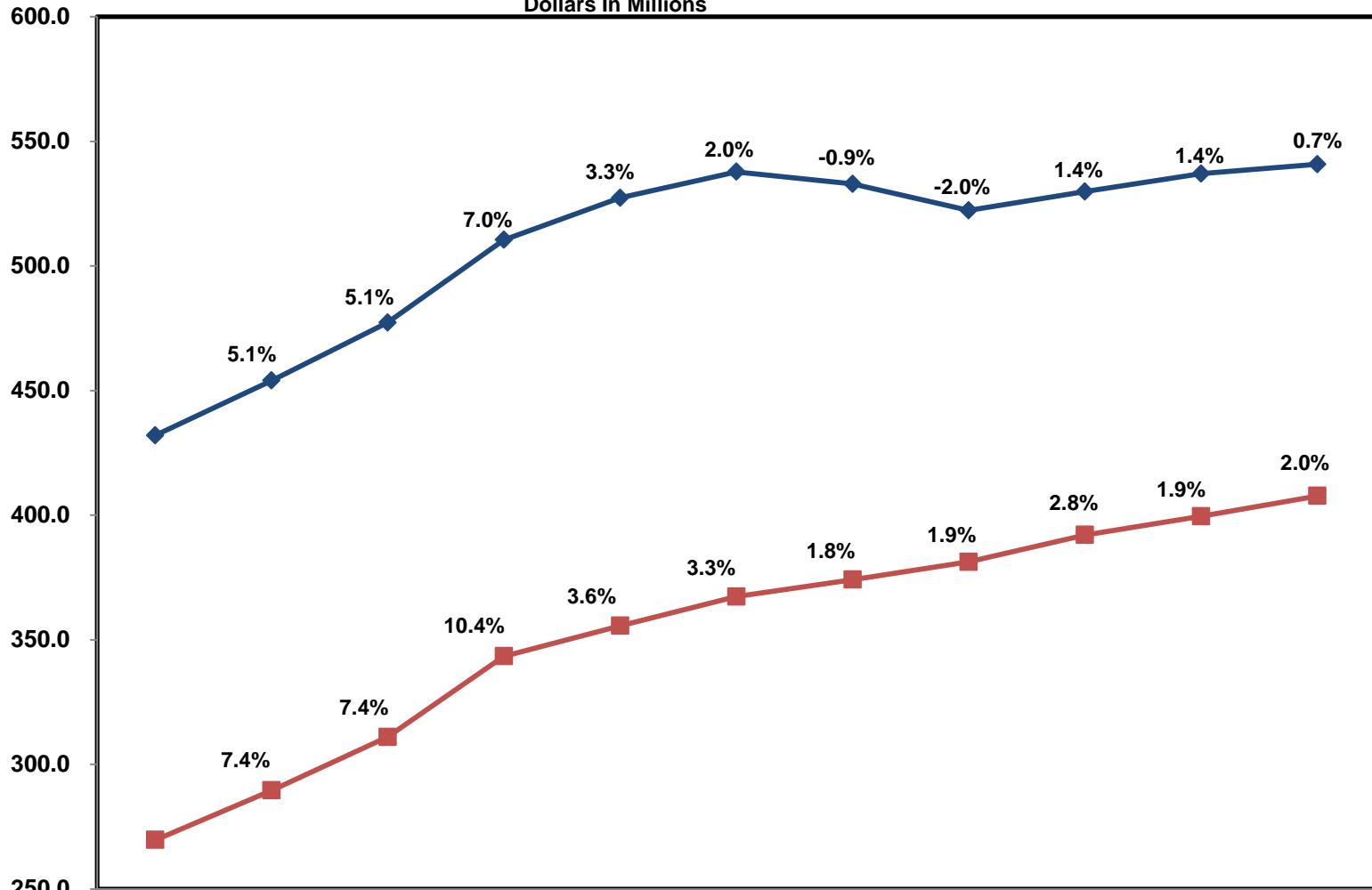
\* FY 16 Receipts are the sum of General State Aid, Loss Limit Grant, and Funding for Children Requiring Special Education Services.

\*\* Foundation = per pupil local resources < 93% of Foundation Level -- Alternate Method = per pupil resources ≥ 93% but < 175% of Foundation Level -- Flat Grant = per pupil local resources ≥ 175% of Foundation Level -- Lab & Alternative = Foundation Level x ADA

\*\*\* Statutory language to direct the State Board of Education to calculate each district's prorated share of the amount needed from the total net General State Aid funding to be utilized for the provision of special education services in a manner that ensures compliance with the Federal Individuals with Disabilities Act Maintenance of Fiscal Effort Requirements.

**ILLINOIS STATE BOARD OF EDUCATION**  
**Regular and Special Education Transportation Cost, excluding District 299**  
**Exhibit H**

Dollars In Millions

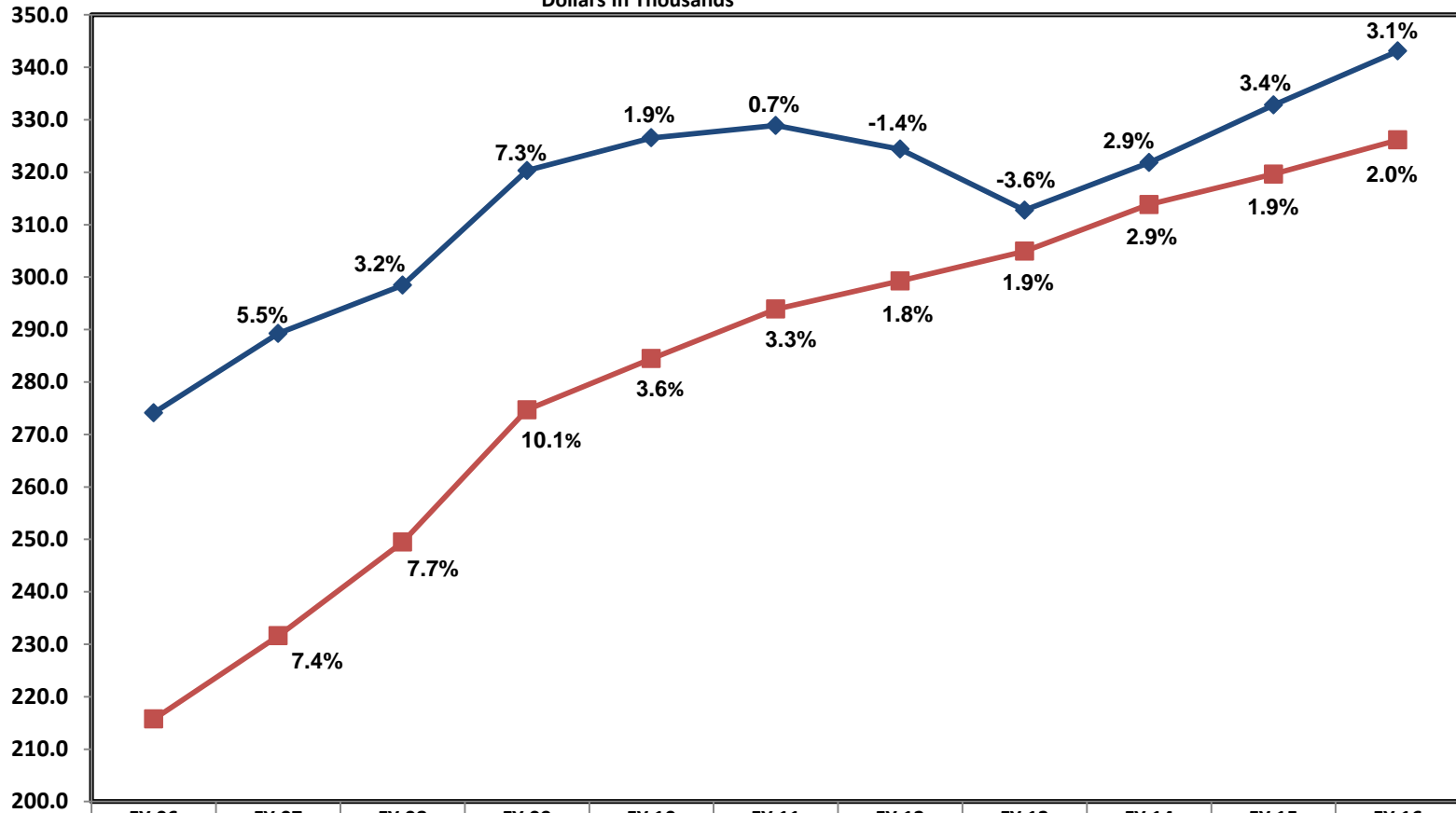


	FY 06	FY 07	FY 08	FY 09	FY 10	FY 11	FY 12	FY 13	FY 14	FY 15	FY 16
◆ Reg/Voc Costs	432.0	454.0	477.2	510.4	527.3	537.8	532.9	522.3	529.8	537.0	540.8
■ Spec Ed Costs	269.7	289.5	311.0	343.4	355.6	367.3	374.1	381.3	392.1	399.5	407.7

**ILLINOIS STATE BOARD OF EDUCATION**  
**Regular/Vocational and Special Education Transportation Claims and**  
**Prorations, excluding District 299**

**Exhibit I**

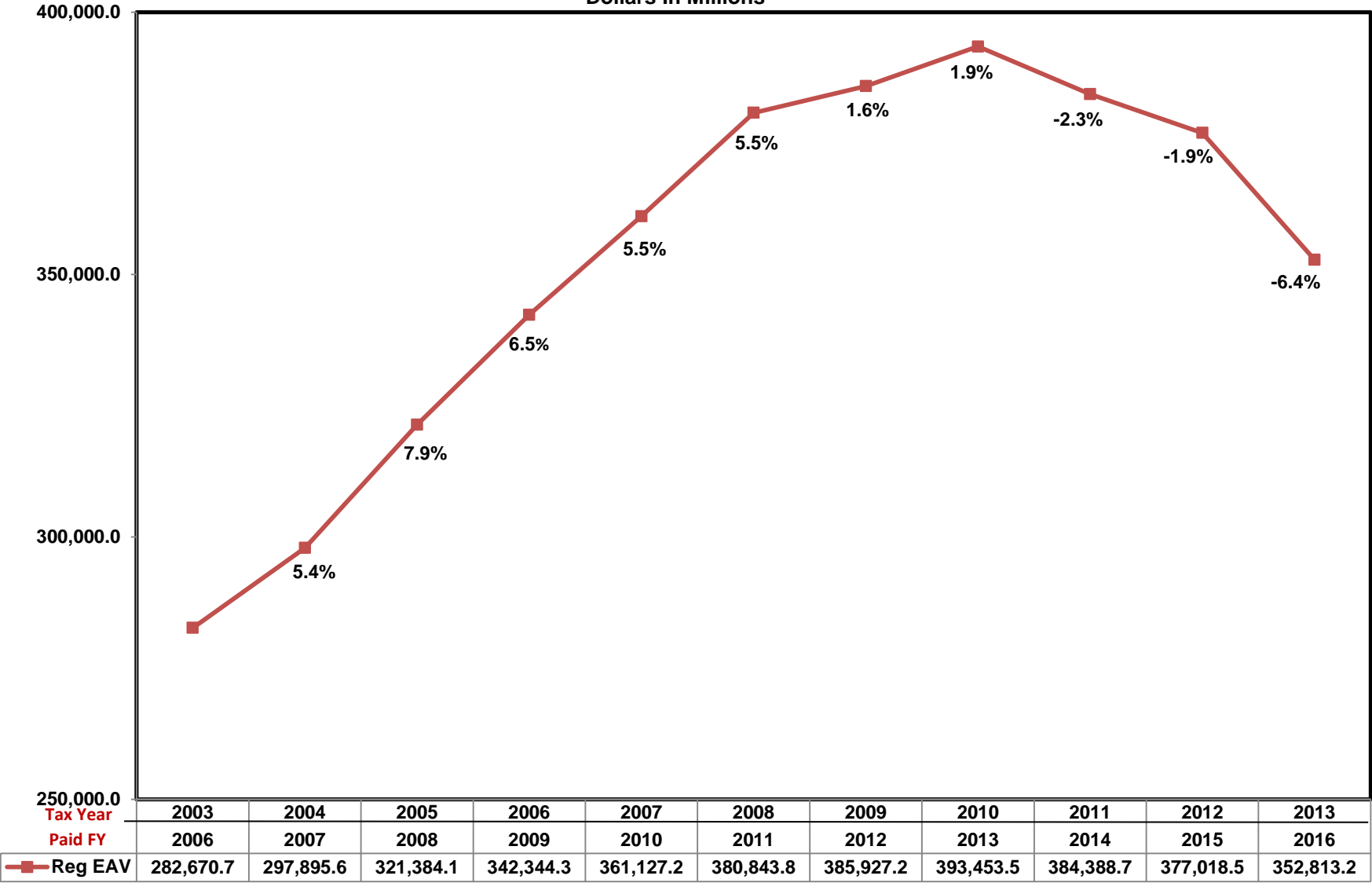
Dollars In Thousands



	FY 06	FY 07	FY 08	FY 09	FY 10	FY 11	FY 12	FY 13	FY 14	FY 15	FY 16
◆ Reg/Voc Claim	274.1	289.3	298.5	320.3	326.5	328.9	324.4	312.7	321.8	332.8	343.1
Reg/Voc Proration	95%	97%	100%	100%	100%	74%	77%	76%	74%	71%	70%
■ Sp Ed Claim	215.7	231.6	249.5	274.7	284.5	293.9	299.3	304.9	313.8	319.6	326.1
Sp Ed Proration	100%	98%	100%	97%	100%	100%	100%	99%	97%	95%	96%



**ILLINOIS STATE BOARD OF EDUCATION**  
**Equalized Assessed Valuation used In Regular**  
**Transportation Paid Claims, excluding District 299**  
**Exhibit J**  
**Dollars In Millions**



**ILLINOIS STATE BOARD OF EDUCATION**  
**Superintendent's Recommended FY 2017 Assessment Budget**  
**January 6, 2016**  
**Exhibit K**

<b>Estimated FY17 Assessment Costs</b>			
<b>Contract</b>	<b>FY16 Cost</b>	<b>FY17 Cost</b>	<b>Difference</b>
<b>PARCC</b>	<b>\$ 29,832,287</b>	<b>\$ 47,598,051</b>	<b>\$ 17,765,764</b>
<i>PARCC - Grades 3-8 plus once during High School</i>	\$ 28,204,436	\$ 29,180,300	\$ 975,864
<i>PARCC - Two additional High School Assessments</i>	\$ -	\$ 8,754,400	\$ 8,754,400
<i>PARCC - Pearson Administration Fee</i>	\$ 51,294	\$ 51,294	\$ -
<i>PARCC Inc. Administration</i>	\$ 1,226,557	\$ 1,226,557	\$ -
<i>PARCC Data Warehouse</i>	\$ 350,000	\$ 1,190,000	\$ 840,000
<i>PARCC Non-Summative Testing - Grades K-8</i>	\$ -	\$ 7,195,500	\$ 7,195,500
<b>College Entrance Assessment</b>	<b>\$ 4,761,900</b>	<b>\$ 4,761,900</b>	<b>\$ -</b>
<i>11th Grade Assessment</i>	\$ 4,761,900	\$ 4,761,900	\$ -
<b>Science Assessment</b>	<b>\$ 6,000,000</b>	<b>\$ 6,000,000</b>	<b>\$ -</b>
<b>Other Required Assessment Costs (DLM, ACCESS, Etc.)</b>	<b>\$ 8,061,413</b>	<b>\$ 8,564,075</b>	<b>\$ 502,662</b>
	<b>\$ 48,655,599</b>	<b>\$ 66,924,026</b>	<b>\$ 18,268,426</b>

<b>FY17 Superintendent Recommended Assessments Funding</b>	
<b>FY17 Assessments Cost</b>	<b>\$ 66,924,026</b>
<i>Less: Available Federal Assessments Funding</i>	<u>13,824,026</u>
<b>FY17 GRF Assessments Funding Required</b>	<b>53,100,000</b>
FY 16 GRF Assessments Appropriation*	28,000,000
<b>Recommended GRF Assessments Increase</b>	<b>25,100,000</b>

\* FY16 GRF Assessment Appropriation vetoed in House Bill 4151. FY16 Appropriation shown at the amount needed to fund FY16 Assessments.