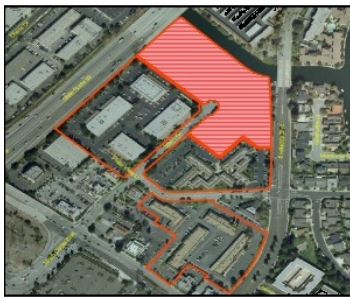


Moment Frames and Z4 Used in Mixed-Use Development

MiTek Builder Products' Multi-Story Division is providing both Hardy Frames Special Moment Frames and Z4 Rod System to "The Waverly" in Foster City, Ca.



The Waverly is a mixed-use development for the approximately 6.3 acre site now occupied by 1159 - 1166 Triton Drive. The development will be the third phase of the Pilgrim Triton Master Plan previously approved for the approximately 20.75 acre area that includes development of the following primary components: 296,000 square feet of commercial/industrial office use; 730 residential units, including up to 64 live-work units; and one-acre park/open space area.

Johnstone Moyer is the General Contractor and Davis Development Company the framer of the Waverly which is a (5) level wood construction project with (220) residential units and retail space. Davis Development is one of the largest wood construction framers in CA and a long time MiTek Builder Products customer.

The Hardy Frame Special Moment Frame provides the strength for large window openings required for the retail portion of the project while the Z4 rod system provides the seismic, shear wall strength for the residential units. Together MiTek Builder Products provides cost effective, easy to install, structural solutions for this high end, multi-family project and many like it throughout the country.

