

The Hardy Frame[®] Panel in Back to Back Installations.

Double the value without increasing the wall length.

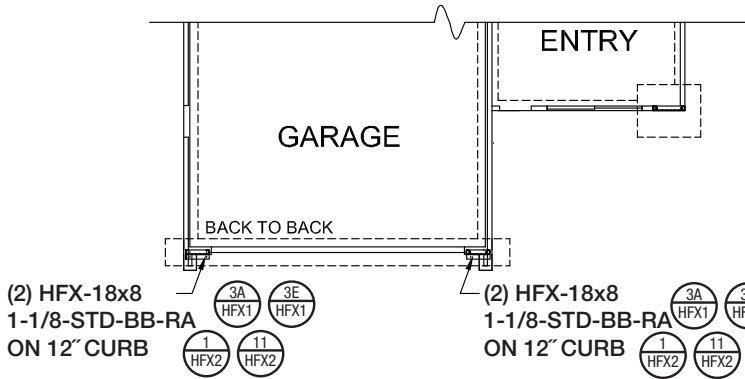
- Back to back Panel installation in 8 inch wall framing provides full capacity for each Panel without increasing the wall length or encroaching on openings.
- Accommodates garage fronts large window and door openings to maximize views and 2-story stacking conditions to distribute cumulative loads.
- Compares with Moment Frames for allowable loads at significantly less cost.



**HF HARDY
FRAME[®]**
SHEAR WALL SYSTEM
MiTek

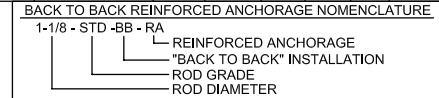
1732 Palma Dr., Suite 200, Ventura, California 93003 800 754-3030
www.hardyframe.com

How to specify anchorage, bottom and top connections

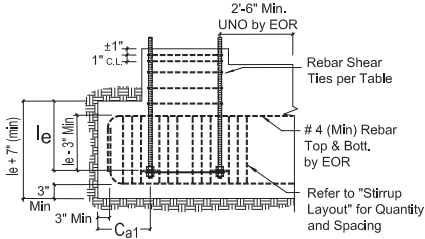


FOUNDATION PLAN

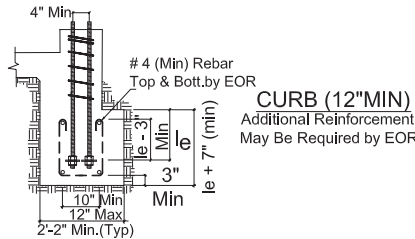
Model	Panel Width (in)	Anchorage ¹	Rod Dia (in)	Rod Grade ^{2,3}	BB-RA ⁵			Stirrups ⁹ (ea)	Shear ^{7,8} Tie Sz & Spa
					le ⁴ (in)	Ca1 (in)	Ca2 (in)		
HFX-9x	9	1-1/8-STD-BB-RA	1-1/8	STD	13	19-3/4	11	8 - # 4	# 3 (min) @ 3-3/4" OC
		1-1/8-HS-BB-RA		HS					
HFX-12x	12	1-1/8-STD-BB-RA	1-1/8	STD	18	20-5/8	11	11 - # 4	# 3 (min) @ 4" OC
		1-1/8-HS-BB-RA		HS					
HFX-15x	15	1-1/8-STD-BB-RA	1-1/8	STD	20	20-5/8	11	12 - # 4	# 4 (min) @ 4" OC
		1-1/8-HS-BB-RA		HS					
HFX-18x	18	1-1/8-STD-BB-RA	1-1/8	STD	23	20-5/8	11	15 - # 4	# 4 (min) @ 4" OC
		1-1/8-HS-BB-RA		HS					
HFX-21x	21	1-1/8-STD-BB-RA	1-1/8	STD	26	20-5/8	11	16 - # 4	# 4 (min) @ 4" OC
		1-1/8-HS-BB-RA		HS					
HFX-24x	24	1-1/8-STD-BB-RA	1-1/8	STD	26	20-5/8	11	18 - # 4	# 4 (min) @ 4" OC
		1-1/8-HS-BB-RA		HS					



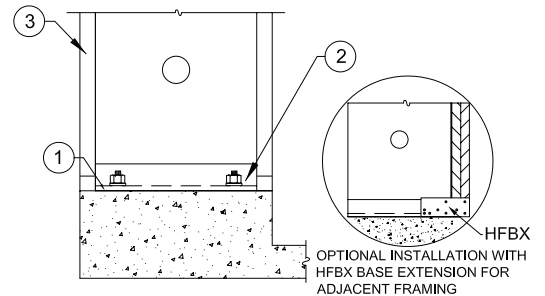
BACK TO BACK REINFORCED ANCHORAGE



CURB AT OUTSIDE CORNER



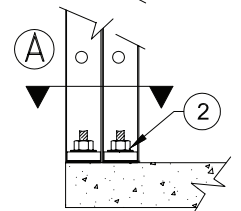
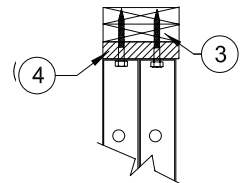
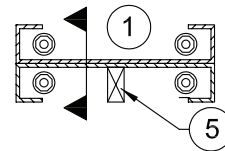
BACK TO BACK SECTION AT CURB



INSTALLATION ON CURB



SECTION A



1. CAVITY ORIENTED FOR CONNECTION ACCESS.
2. 1 EA. HARDENED ROUND, 2 EA. SAE OR 2 EA. ROUND-FLAT WASHERS AND 1 EA. GRADE 8 HEX NUT AT BOTH ENDS.
3. 8 INCH FRAMING ABOVE (MIN).
4. A 2x FILLER WITH 1/4" x 4-1/2" MIN USP-WS SCREWS (OR EQUAL) IS PERMITTED.
5. WOOD BACKING FIELD INSTALLED AS NEEDED.

BACK TO BACK INSTALLATION

